

**APE** | Asia  
Photonics  
Expo

# ASIA PHOTONICS EXPO

# PRODUCT BROCHURE

*Source: APE Digital Showroom | Updated as of 24 December 2025*

**4 - 6 February 2026**

Sands Expo and Convention Centre, Singapore



JOIN APE'S WHATSAPP  
COMMUNITY



GET YOUR  
FREE PASS

[www.asiaphotonicsexpo.com](http://www.asiaphotonicsexpo.com) #APE2026    

Held in:



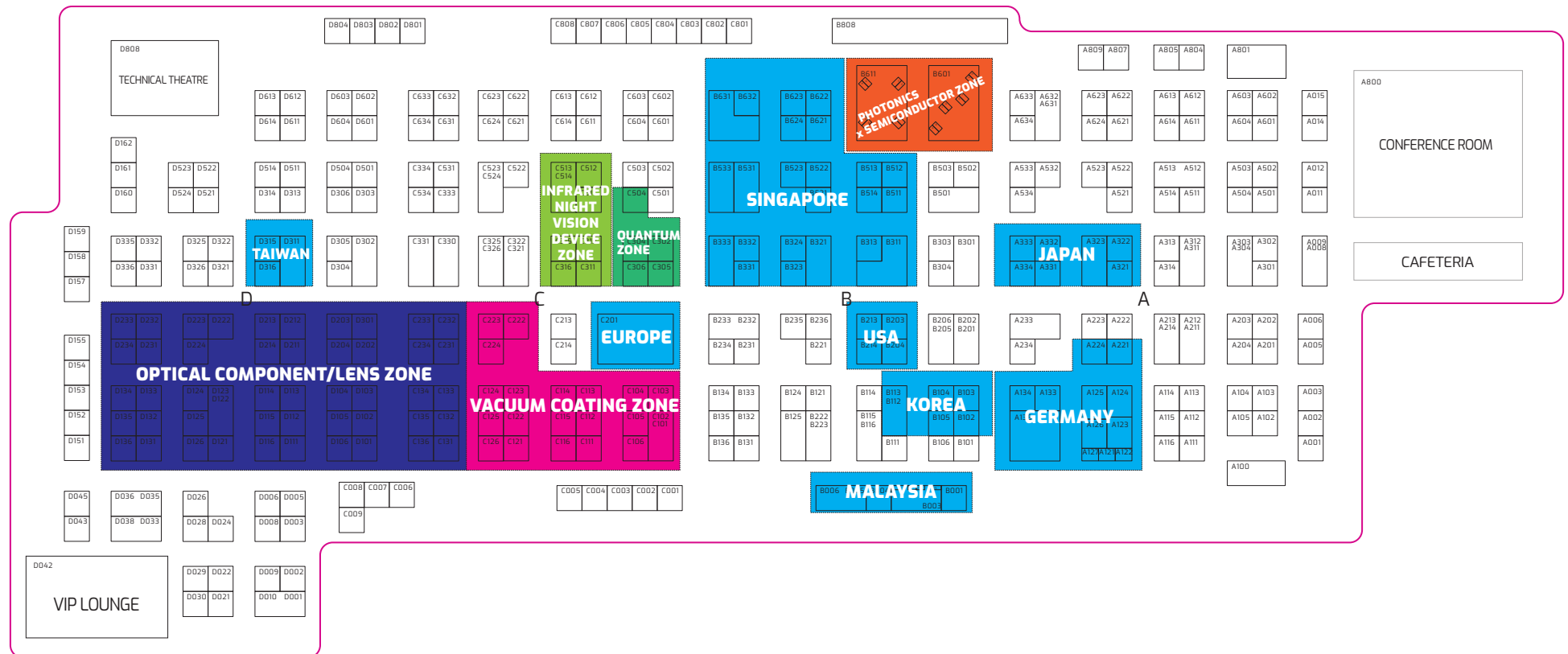
Brought to you by:



Supported by:



# FLOOR PLAN



- INTERNATIONAL PAVILIONS
- QUANTUM ZONE
- INFRARED NIGHT VISION DEVICE ZONE
- OPTICAL COMPONENT/LENS ZONE
- VACUUM COATING ZONE
- PHOTONICS x SEMICONDUCTOR ZONE

\* The latest floor plan is subject to on-site adjustments.

# CONTENTS

Product Category	Segmentation	Page
Quantum		
Quantum Technology	Quantum Measurement/ Quantum Communication	<a href="#">5-6</a>
Semiconductor		
Semiconductor Equipment	Die Bonder	<a href="#">7-8</a>
Semiconductor Equipment	LED UV Curing Machine	<a href="#">9</a>
Semiconductor Equipment	Dicing Saw/Dispensing Machine	<a href="#">10</a>
Semiconductor Equipment	Stacking Machine/Lithography Machine	<a href="#">11</a>
Semiconductor Equipment	Prober/Isolator	<a href="#">12</a>
Semiconductor Equipment	Core Parts	<a href="#">13-14</a>
Fabrication and Packaging Service		<a href="#">15</a>
Semiconductor Material	Substrate/Target/Heat Sink/ Thin Film/Polyimide Protection/Adhesive	<a href="#">16-17</a>
Optical Communication		
Optical Communication Chip		<a href="#">18</a>
Optical Communication Module		<a href="#">19-20</a>
Optical Communication Device	Active Device	<a href="#">21-22</a>
Optical Communication Device	Passive Device	<a href="#">23-27</a>
Optical Communication Transmission Equipment	WDM	<a href="#">28</a>
Optical Communication Transmission Equipment	ONU/Router/Switch	<a href="#">29</a>
Optical Fiber Cable	Patch Cord	<a href="#">30</a>
Cable & Wire		<a href="#">31-32</a>
Wiring Product	Distribution Box/Patch Panel	<a href="#">33-34</a>
Cable Manufacturing Equipment	Fusion Splicer/Cutting Machine	<a href="#">35</a>

# CONTENTS

Product Category	Segmentation	Page
Precision Optics		
Optical Material		<a href="#">36</a>
Optical Component	Lens/Window	<a href="#">37-39</a>
Optical Component	Filter	<a href="#">40</a>
Optical Component	Mirror/Prism	<a href="#">41</a>
Optical Component	Automotive/Medical Optics	<a href="#">42</a>
Optical Component	AR/VR Optics and Optical Design Software	<a href="#">43</a>
Optical Component		<a href="#">44</a>
Camera Lens		<a href="#">45</a>
Optical Processing Equipment		<a href="#">46-48</a>
Optics Fabrication		<a href="#">49</a>
Optical Coating Service		<a href="#">50</a>
Optical Coating Equipment & Parts		<a href="#">51-52</a>
Laser, Infrared and Sensing		
Laser		<a href="#">53-54</a>
Laser Component		<a href="#">55-56</a>
Laser Equipment		<a href="#">57</a>
Infrared Component		<a href="#">58</a>
Infrared Lens/Camera		<a href="#">59-60</a>
Infrared Device		<a href="#">61</a>
LiDAR and Sensing		<a href="#">62</a>
Test and Measurement		
Optical Test and Measurement		<a href="#">63-66</a>
Test and Measurement	Semiconductor	<a href="#">67-68</a>
Test and Measurement	Alignment Equipment	<a href="#">69-70</a>
Test and Measurement	Spectroscopy	<a href="#">71</a>
Test and Measurement	Microscope	<a href="#">72</a>
Test and Measurement	Imaging Measurement	<a href="#">73</a>
Test and Measurement	AOI	<a href="#">74</a>
Test and Measurement	Positioning System	<a href="#">75-76</a>
* Source: APE Digital Showroom (Updated as of 24 December 2025)		
Conference and Event Programmes		<a href="#">77</a>

# Quantum Technology

## Quantum Measurement/Quantum Communication

**ACEXON TECHNOLOGIES PTE LTD**

B311

**TOPTICLOCK - Optical Quantum Clock**

TOPTICLOCK – the world's first commercial optical quantum clock based on a trapped Yb<sup>+</sup> ion. This breakthrough marks a major step in bringing quantum technology out of the lab and into real-world applications. With TOPTICLOCK, scientists and industry pioneers gain access to unprecedented precision in timekeeping – opening doors for cutting-edge research, and next-generation satellite navigation systems. TOPTICLOCK sets new benchmarks in: Time scales & time services (e.g. National Metrology Institutes, TAI contributions) Network synchronization Satellite navigation Long-term holdover in GNSS-denied environments Fundamental research & precision measurements

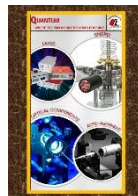


**OPTOSIGMA SOUTHEAST ASIA PTE LTD**

B301

**Quantum Technology**

OptoSigma supplies Superconducting Nanowire Single Photon Detector (SNSPD) systems capable of achieving high detection efficiency (up to 98% at 1550 nm), wide range for detection (400 nm - 3000 nm) as well as low timing jitter (<50 ps) with up to 32 detection channels. OptoSigma also provides educational platforms based on NV diamond technology that enables basic concepts of quantum physics and engineering to be demonstrated. Additionally, OptoSigma supplies ultra-narrow linewidth and single frequency lasers from UV to IR wavelengths. Target applications include quantum key distribution, quantum random number generation, quantum computing and quantum communication.



**QUBIG GMBH**

A221

**Broadband Phase Modulators (TWP)**

Laser Frequency control in the UV (313nm) to NIR (1100nm) optical range is a key element in the implementation of high-precision Quantum technologies. QUBIG's traveling wave broadband phase modulators (TWP-series) and their matching drivers (QDB) can be equipped with nifty features to provide a robust and versatile frequency offset lock over a span of up to 20 GHz between a laser and a stable frequency reference, such as an optical cavity, another laser (master), or an atomic transition.



**QUBIG GMBH**

A221

**Single-Photon Demultiplexing Systems (DMX)**

Single-photon demultiplexing refers to the process of separating and extracting individual photon signals from a composite stream of photons. This technique is crucial in quantum communication and quantum information processing systems, where the ability to manipulate and detect individual photons is essential. It enables the extraction of quantum states carried by photons and facilitates various protocols such as quantum key distribution (QKD) or quantum teleportation. QUBIG offers low optical loss spatial demultiplexing systems with single-photon repetitions up to 160MHz and up to 16 channels.



# Quantum Technology

## Quantum Measurement/Quantum Communication

### TNO SCIENCE AND INDUSTRY

C204

### Quantum SatCom

Quantum computing is expected to solve some of the biggest challenges of our time. From predictive analysis to material design, from pharmaceutical development to the processing of enormous data sets. Yet building a sufficiently powerful quantum computer is extremely challenging. A promising solution is to connect smaller quantum computers via a network in which quantum information is shared, so that their capacity can be combined. TNO has set an ambitious roadmap to make such a global quantum internet possible – and this will most probably require satellites in space.

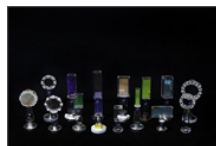


### BEIJING XINNAN ZHIKE OPTOELECTRONIC TECHNOLOGY CO., LTD

C304

### High-Precision UHV Polyhedral Glass Cells

Our UHV Polyhedral Glass Cells are the premier choice for complex quantum gas experiments. Engineered with high-grade Fused Silica or Borosilicate glass, these cells feature  $PV \leq \lambda/10$  surface flatness and  $\leq 2''$  parallelism, ensuring minimal wavefront distortion. The hexagonal and octagonal geometries provide  $360^\circ$  optical access, perfectly accommodating 3D-MOT, optical lattices, and non-orthogonal laser paths. With a certified Helium leak rate of  $< 1 \times 10^{-12}$  mbar-L/s and  $250^\circ\text{C}$  bake-out compatibility, they maintain the pristine vacuum environments required for long-lifetime atomic trapping in quantum simulation and high-precision sensing platforms.



### BEIJING XINNAN ZHIKE OPTOELECTRONIC TECHNOLOGY CO., LTD

C304

### ULE® Ultra-Stable Reference Cavities

Designed for optical frequency metrology, our ULE (Ultra-Low Expansion) Reference Cavities serve as the ultimate frequency flywheel. Fabricated from Corning ULE® glass and assembled using Optical Contact Bonding, these cavities ensure zero-outgassing and long-term mechanical stability in UHV environments. Featuring IB5-coated mirrors with Finesse  $> 300,000$ , they enable laser line-narrowing to the sub-Hz level. Available in cylindrical or compact cubic geometries, they are indispensable for optical clocks and low-phase-noise microwave generation. Under optimal thermal shielding, these cavities achieve an Allan deviation of  $5 \times 10^{-16}$ , providing a robust reference for precision spectroscopy.



### DOSPECTRUM

C113

### Quantum Cascade Laser

The quantum cascade laser (QCL) is a new type of semiconductor laser. QCLs retain the compact size and long lifespan characteristic of traditional semiconductor lasers. As a product of innovative semiconductor laser theory, QCLs have significantly expanded the lasing range of semiconductor lasers. Prior to the invention of QCLs, traditional semiconductor lasers primarily emitted wavelengths in the visible and near-infrared bands. QCLs have extended the emission range of semiconductor lasers to the mid- and far-infrared as well as terahertz bands, enabling growing applications in gas detection, space communication, infrared countermeasures, and terahertz imaging.



# Semiconductor Equipment

## Die Bonder

### MRSI AUTOMATION (SHENZHEN) CO., LTD

B214

#### MRSI-H1 Family 1-Micron Flip-chip Die Bonders

Product Features: · Proven exceptional flexibility and reliability for true high-mix, high-volume production of multiple chips, processes, and products. · High precision design with a patented zero-time tool change turret design, identical to the best-selling MRSI-HVM. · Optional loading/unloading conveyors available. · This series enhances efficiency by increasing parallel material handling without sacrificing flexibility, accuracy, or reliability. · Configured according to the process characteristics of different application fields, classifying the H series products accordingly. Application Areas: Optical transceivers and other photonic devices, RF and microwave devices, high-power laser applications, and TO header packaging applications.



### SUZHOU BOZHON SEMICONDUCTOR CO., LTD

A504

#### MicroStar Series EF8622 Eutectic Die Bonding Machine

EF8622 is a fully automatic eutectic die bonder designed for high-precision, multi-chip packaging in optical communications and data center applications. It supports eutectic and dipping processes with  $\pm 1.5\mu\text{m}@3\sigma$  accuracy, dual-station parallel operation, and 12-nozzle dynamic tool change. The system integrates an air-floating platform and dual-pulse heating to enhance alignment stability and thermal uniformity, with AGV and multi-carrier compatibility for high-yield, low-intervention production.



### SHENZHEN AIT PRECISION TECHNOLOGY CO., LTD.

A113

#### Die Bonder

isRhea2030 is a high-precision die bonding device designed for optical communication packaging. It achieves a maximum placement accuracy of  $\pm 1.5\mu\text{m}@3\sigma$ . Its open modular structure design provides greater production flexibility, and, when paired with an adjustable track-width transport system, it supports multiple types of chip feeding and both flip-chip and standard mounting processes. The system is capable of fully automated mass production, including chip feeding, glue dipping or dispensing, wafer alignment, placement, UV curing, and post-bonding inspection, meeting the production requirements for COB/BOX silver paste processes.



### LASER X TECHNOLOGY (SHENZHEN) CO., LTD.

A808-17

#### Automatic High Precision Die Bonder

##### Product Features

1. Achieving  $\pm 3\mu\text{m}/\pm 5\mu\text{m}$  XY placement accuracy
2. COB, BOX etc multi-chip bonding capability
3. Auto bond-tool change, up to 4 bond-tool buffers
4. Supports epoxy stamping and dispensing
5. Auto wafer change, up to 4 x 6" wafer ring
6. Optional: Waffle pack, Gel-Pak, tray or by request





# Semiconductor Equipment

## Die Bonder

### MICROVIEW INTELLIGENT PACKAGING TECHNOLOGY (SHENZHEN) CO., LTD

B101

### 1.5 $\mu$ m High-speed Bonder Mbonder-HGM

- ①High precision collaboration;
- ②Multi chip application;
- ③High speed mounting;
- ④Efficient material transfer: fully automatic loading and unloading system, assembly line material transfer system;
- ⑤Multilingual software interface;



### NINGBO SHANGJIN AUTOMATION TECHNOLOGY CO., LTD.

A808-19

### Fully Automatic Wire Bonder-BRT7000

The BRT7000 is a fully automatic wire bonding machine with a bonding accuracy of  $\pm 2\mu\text{m}@3\sigma$ . Real-time quality monitoring capability High reliable motion control system Programmable automatic material handling system Programmable focus, pattern recognition with high accuracy and strong adaptability



### SUZHOU LIEQI INTELLIGENT EQUIPMENT CO., LTD

A314

### LQ-VADB30P Real-Time Alignment Die Bonder

LQ-VA: B30P Peculiarity: Fully Automatic Loading/Unloading Conveyor System; Applicable for COB (Chip-on-Board) and BOX Deep-Cavity Real-Time Alignment High-Precision Multi-Chip Hybrid Mounting; Supports 6-inch Blue Film, Wafer Cassettes, Gel-Pak, and Other Feeding Methods; Multi-Crystal/Component Handling Capability with Support for Up to Five Chip Sizes; Integrated Nozzle Magazine with Automatic Nozzle Change Function; Standard Placement Accuracy:  $\pm 1.5\mu\text{m}$ ;



### SUZHOU LIEQI INTELLIGENT EQUIPMENT CO., LTD

A314

### HS-DB3000 Multi-Chip Die Bonder

HS-DB3000 Product Overview: The CE-certified HS-DB3000 is a high-speed multi-functional die bonding system designed for high-volume industrial manufacturing. Featuring an adjustable-width conveyor system for seamless integration with production lines, it incorporates a 12-inch wafer loading system, automated wafer stage, and programmable nozzle assembly to meet diverse chip placement demands. Its modular architecture enables flexible customization, while intelligent calibration and data management systems ensure full process traceability and user-friendly operation.





# Semiconductor Equipment

## LED UV Curing Machine

### EPOXY AND EQUIPMENT TECHNOLOGY PTE LTD

B511

### Technodigm LED UV Curing Systems

Technodigm's latest range of modular LED UV light sources offers an unprecedented level of customization, allowing businesses to configure their curing environment exactly to the way they need. No more one size fits all solutions that forces you to compromise. Benefits: 1. Multiple wavelength options available ensuring compatibility with a wide range of UV curable material 2. Precision and uniform curing results 3. Scalable for production efficiency



### DOU YEE ENTERPRISES (S) PTE LTD

B512

### Hoya UV LED Technology

Key Features: -Neuron Microchip Network -Constant Monitoring - Intelligent Indicators -Intuitive GUI -Aesthetic Power Supply Architecture -25W/cm<sup>2</sup> Peak Irradiance -Digital AC/DC Converter - Modular Maintenance Structure



### WUHAN IBRNTECH CO., LTD.

D301

### UVLED Curing

IBRN Industrial Curing Products include UVLED spot/line/area curing light, intelligent UVLED curing oven, UVLED curing tunnel, UVLED curing hand-held machine, UVLED inkjet curing machine and UVLED system for optical fiber drawing/coloring coating curing. Our products have the characteristics of strong irradiation, better and more stable curing quality, less heat generated, cost saving, network up time and long life. All products are equipped with multi-language human-computer interaction industrial color screen, and with adjustable power accuracy from 1% to 100% as well as fault detection function. The products are widely used in 3C electronics, optical communications, optical fiber & cable, inkjet printing.



# Semiconductor Equipment

## Dicing Saw/Dispensing Machine

**DISCO HI-TEC (SINGAPORE) PTE LTD**

A332

DFL7362 is a fully-automatic laser saw for  $\Phi 300$  mm wafers, which is compatible with various processes to achieve high-speed, high-quality processing of ultra-thin silicon wafer. Si with a thickness of 50  $\mu\text{m}$  or less can be singulated at high speed while maintaining high die strength. The equipment offers both wafer and frame transferring, making it possible to support a wide range of applications. DISCO can offer smooth sidewalls with our SDBG process, and is the machine of choice for many photonics manufacturers.

**DFL7362 Fully Automatic Laser Saw**



**DISCO HI-TEC (SINGAPORE) PTE LTD**

A332

Flagship model for  $\Phi 300$  mm wafers with high process extensibility. Compatible with both frame and two-way (frame/wafer) transferring. Various processes, including full cut and half cut, can be supported with only one DFD6363. Size conversion operations can be reduced, reducing human error. Supports both standard cassettes ( $\Phi 200$  mm /  $\Phi 300$  mm) and FOUP cassettes.

**DFD6363 Fully Automatic Dicing Saw**



**DOU YEE ENTERPRISES (S) PTE LTD**

B512

"5 Major Functions" for high throughput and high-quality dispensing: High-speed dispensing with uninterrupted, continuous operation High-speed alignment with uninterrupted, continuous operation Automatically controls dispensing quantity Forms "leaf line" dispensing patterns that are ideal for avoiding voids Prevents large numbers of defects from occurring

**FAD5100WH - Dispensing Machine**



**HEBEI THAHOO PHOTOELECTRIC TECHNOLOGY CO., LTD.**

B106

The compound wafer scriber is a device that utilizes a diamond scribing tool to create precise lines on wafers or bars made from materials such as GaAs, InP, GaN, SiC, and AlN. It is capable of scribing wafers or bars up to 6 inches in size and is designed for automatically scribing chips, including photodetectors (PD), laser diodes (LD), and high-power chips. This device features automatic loading and unloading capabilities, as well as pre-scanning functions. It employs high-precision alignment cameras to ensure accurate positioning of chips. Additionally, it supports automatic loading and unloading by robots. The scribing pressure and the...

**Compound Semiconductor Chip Scribing/Splitting Machine**



# Semiconductor Equipment

## Stacking Machine/Lithography Machine

### IN-CUBE AUTOMATION

B111

### LD Bar Stacking Machine

Transfer LD Bar from tape and stacking to coating fixture. • High Speed and Precision: Equipped with linear motors, achieving a production efficiency of 12 seconds per group. • Visual Positioning: Full-vision alignment system accurately identifies the position of each product, capable of detecting broken bars and chipped edges. • Real-Time Demonstration: Vision system supports real-time mode switching, enabling visible and controllable adjustments for debugging and fine-tuning. • Class 100 Dustproof Environment: Constructed with a mirror-finished stainless steel frame and high-efficiency air filtration units to maintain a clean workspace. • High Efficiency Output: Dual workstations and dual suction nozzles for pick-and-place operations, combined with alternating



### Fully Automated Photonic Integration of Hybrid Multi-chip Assemblies

### SINGPHOTONICS INTERNATIONAL PTE. LTD. A222

Key Features • Source-free alignment • High interconnect density • Low-loss connection between any waveguide modes • Tolerance of several-micrometer chip placement deviations • High reliability, suitable for large-scale automated production Applications • Hybrid integration of laser chips (PWB technology) • Chip output mode transformation (micro-optics lens technology)



### WUHAN IBRNTECH CO., LTD.

D301

### Lithographic Exposure

IBRN Lithography Exposure Products adopts freeform surface optical design technology and the inorganic packaging process of aluminum nitride on the independent packaging and testing production line, achieving industry-leading performance with a parallel half-angle of the output light less than 1.2° and an output light uniformity of more than 97%. Supporting multi-wavelength integrated customization, it provides reliable exposure solutions for the microelectronics and precision manufacturing industries, with technical indicators reaching international advanced levels.



### CHENGDU TIMEMAKER CRYSTAL TECHNOLOGY CO., LTD

A203

### Lithography Machine

Fully automatic lithography machine, a high-precision mask alignment exposure system specifically designed for cartridge-based feeding, featuring automatic loading, mask and wafer leveling, automatic front-back alignment, exposure, and automatic unloading. The machine also meets Class 100 cleanroom requirements.



# Semiconductor Equipment

## Prober/Isolator

YUNYI

C007

### Multi-functional Wafer Prober ICP-EX (T)

ICP-EX(T) is a multi-functional equipment which supports automated probe testing for single product wafers, MPW wafers, frame chips and chiplets (under ambient and -60°C to 200°C /300°C conditions), with Micro-hole Vacuum Chuck, automatic positioning/compensation, automated loading/unloading, and visual calibration capabilities, it supports various probes including RF probes, mixed probe cards, and square cards.



### SUZHOU ZHIXING SEMICONDUCTOR TECHNOLOGY CO., LTD.

B115, B116

### Manual Probe Station & System

Our manual probe station series features a flexible modular design, enabling customized testing setups tailored to your application scenarios. Through various optional accessories and testing instruments, it supports a wide range of complex and evolving wafer-level testing requirements, while offering strong scalability for both general-purpose and dedicated applications. Whether for in-depth R&D analysis or small-scale, high-precision testing environments, this system delivers exceptional testing assurance. With high-accuracy measurement and stable, high-speed performance, it provides comprehensive testing capabilities—covering general IV/CV tests, RF testing, high-power testing, optoelectronic testing, and more.



### SHENZHEN THANS VIBRATION ISOLATION TECHNOLOGY CO., LTD.

C124

### TH53 Advanced Vibration Isolator

Multi-directional ball-type design makes the natural frequency of the vibration isolation system lower, thus results in better performance in both vertical and horizontal direction. For better repeatability, precision leveling valves of 0.05mm should be installed. TH53 series can be used with external oil damper, it will shorten the settling time of the moving platform and increase the stiffness of the system.



### SHENZHEN THANS VIBRATION ISOLATION TECHNOLOGY CO., LTD.

C124

### THZ1 Pneumatic Vibration Isolation Platform

Small special air spring system, light and portable, easy to install. The platform has good stability and can use stainless steel panel or optical breadboard. Equipped with horizontal leveling valve. Mainly used in SEM.



# Semiconductor Equipment

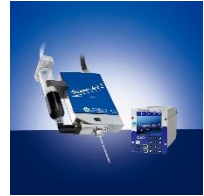
## Core Parts

### DOU YEE ENTERPRISES (S) PTE LTD

B512

### HyperJet2 - Jetting Valve

Synchronized speed multi-; pre-set, Running out of indication spare  
USB communication during Japanese and English, RS-232C  
communication



### AKRIBIS SYSTEMS PTE LTD

A513, A512

### Servo Motor and Driver

Akribis servo motors feature optimized magnetic circuit (30% energy saving), IP67 protection, flexible configuration, plug-and-play electronic nameplate and absolute encoder for diverse harsh industrial applications. Akribis servo drive series encompasses a full range of AC/low-voltage drives, including economical, standard and high-performance series. It features compact size, high efficiency and energy savings, high precision and fast response, and is capable of meeting the demanding motion control requirements in various scenarios.



### PIEZOELECTRIC TECHNOLOGY CO., LTD.

B104

### Auto Focus Module

This AF module uses a piezoelectric actuator (known as an ultrasonic motor) manufactured by us as a driving source. We review the product and provide concept design based on the customer's application and needs. However, we can provide concept designs if our actuators can be applied. For this, we need your requiring specifications, such as the dimension the space where our product can be placed, operating speed, precision, and applicable load. Our products are characterized by motors that are relatively quiet, fast-responding, small, lightweight, and unaffected by electromagnetic environments. Prototype production takes approximately 6-8 weeks after the design is confirmed.



### DONGGUAN JINYUAN HARDWARE MACHINERY CO., LTD.

D213

### Product Components

Core components for aerospace, semiconductors, medical, oil & gas, security, etc.



# Semiconductor Equipment

## Core Parts

### PICOLAS GMBH

A134

#### PLM 1-20-24 Diode Driver / 1-10-24 TEC Controller

Miniaturized, powerful and flexible. These keywords really fit when describing the PLM 1-20-24. The PLM 1-20-24 cw is suitable for driving laser diodes. The PLM 1-10-24 TEC is the version for controlling thermoelectric coolers (TEC). Smaller than a matchbox you can solder it directly on your PCB and interface it using various common buses. You don't need any clips, plugs or screws. The only thing you need is an airflow above the surface. Start right away: Use the evaluation kit for a quick start.



### PICOLAS GMBH

A134

#### LDP-CWM 300 – High Power cw- and qcw Driver

The CWM-300 is a high power cw- and qcw-driver, which is conductively cooled – long life and fanless. You can mount a laser diode right on the aluminium cooling block and couple it thermally. Optional you can replace the milled aluminium cooling block by a 3D-printed version by iq evolution, which gives you the possibility to use a water-cooling system for the driver and the diode. The result: A kilowatt laser system in the size of your palm, which even can be supplied by battery packs.

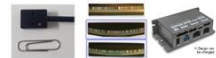


### MICRO MOTION TECHNOLOGY CO., LTD

D124

#### Absolute Encoder & Stepper Motor Driver

1. Absolute Encoder: High Resolution Absolute Encoder with Linear and Gonio Scale : Goniometer Scale optimized for specific curvature of the gonio stage(50R, 75R, 100R, 125R) : Built-in battery-free absolute-sensor IC : Very Compact Size and Cost-effective price : Enables high-speed, high-precision return to origin 2. Hybrid Stepper Motor Driver: Communication support - EtherCAT, RS-485 / Absolute Encoder F/B - Absolute, BiSS-C / By controlling the appropriate current through the FOC method, it achieves low heat generation, low noise, and minimal vibration.



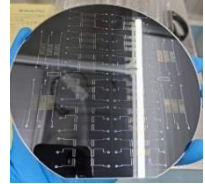
# Fabrication and Packaging Service

## OPTO PRECISION PTE LTD

B533

## Microfabrication and Packaging Solutions

We provide advanced microfabrication and packaging solutions for Microfluidic devices, Semiconductor components, and Optoelectronic applications. Our capabilities include micro-structuring for holes and cavities, wet etching for anti-glare glass, TGV (Through Glass Via) and TSV (Through Silicon Via) interconnects, and UVA, UVC, UHB LED and OLED packaging caps, enabling precise, reliable, and high-performance devices for a wide range of industries.

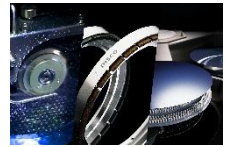


## DISCO HI-TEC (SINGAPORE) PTE LTD

A332

## KKM Service

We provide our customers with the best processing results through our cumulated knowledge of Kiru (cutting), Kezuru (grinding) and Migaku (polishing) technologies. DISCO offers our in-house dicing and grinding service as a means for our customers to cope with unexpected market trends. Our service, termed as "KKM Service", can be utilised for product development and small lot productions. For new difficult devices, it is important to ensure proof of production feasibility and quality before committing to any huge capital expenditure. DISCO is able to optimise the entire dicing and grinding process flow before mass production starts.

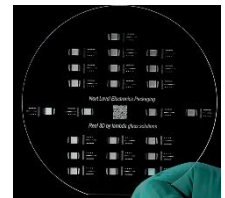


## LAMBDA GLASS SOLUTIONS GMBH & CO.KG

C206

## Packaging Solutions in Quartz Glass

Full 3D Design Freedom (e.g. Helical Vias) · Ultra-dense Miniaturization (15  $\mu$ m Bore Arrays) · Micrometer-level Precision (5  $\mu$ m 3D Pockets) · Reliable Quartz Glass Integration



## FIC GLOBAL, INC.

A521

## Advanced Optical Packaging & Integrated Manufacturing

We integrate SMT, FPCBA, COB, Flip-Chip, SiPh, and CPO processes to deliver full Turnkey manufacturing from board-level assembly to Box-Build. With supply chain control, full traceability, and reliability testing, we help customers build high-density, high-performance optical modules for AI and next-generation communications.





# Semiconductor Material

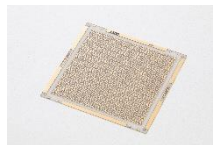
## Substrate/Target/Heat Sink

**JIANGSU FERROTEC SEMICONDUCTOR TECHNOLOGY CO., LTD.**

A322

**DPC Copper Plated Ceramic Substrates**

DPC (Direct plating copper) realizes the metallization of ceramic surface by magnetron sputtering and graphic plating technology, and then improves the oxidation resistance and solderability of substrate by finishing treatment, so as to realize the precision line, and has better flatness and stronger bonding force.

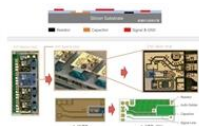


**SUZHOU SENWAN ELECTRONIC TECHNOLOGY CO., LTD**

C321, C322

**Integrated Silicon Substrates**

Senwan based on wafer-level passive integration technology to deliver miniaturized, high-density packaging solutions for optical (TOSA/ROSA/BOX) modules and various chips. Compared with the traditional solution of mounting discrete devices on ceramic substrates, the integrated silicon substrate can directly embed discrete components into the silicon substrate. Based on Senwan process platform, the substrate can also integrate DTC(deep-trench-capacitor), MIM Capacitors, thin-film resistors, NTCs, high-speed signal transmission lines, and Au/Sn pads. This delivers a high-performance, high-density, excellent ESL/ESR and low cost packaging solution, meanwhile also supports the development of more specialized application.

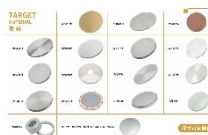


**FUJIAN ZI JIN INNOVATION APPLIED MATERIALS CO., LTD**

C222

**Target Material**

Zijin Mining is rich in mineral resources, which provides a stable guarantee for the supply of raw materials for target products, while reducing the production cost. It has technical advantages in the extraction and purification of precious metals, can produce high-purity precious metal and alloy targets, meet the needs of high-end industries such as semiconductors, and constantly innovate in target preparation technology to promote the expansion of product performance and application fields.



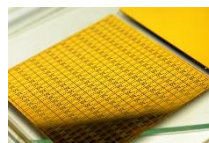
**HOTLONG**

D203

**Heatsink**

Thermal management products, commonly known as heatsinks, are really heatspreaders that take thermal energy from a concentrated source and spread it out thus reducing the thermal impedance and the temperature of the concentrated heat source or solid state heat pipes that take heat from one point in a system to another with low thermal impedance.

These heatsinks are diced from wafers of CVD diamond, aluminium nitride (AlN) or CD diamond and are usually square, oblong or round although any shape is possible, can be structured in a number of ways with different coatings, shapes and electrical properties.



# Semiconductor Material

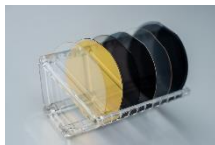
## Thin Film/Polyimide Protection/Adhesive

**JINAN JINGZHENG ELECTRONICS CO., LTD**

A005

**Lithium Niobate Thin Films**

Lithium niobate thin film is a thin film made of lithium niobate (LiNbO<sub>3</sub>) material, which has many excellent properties and has been widely used in the fields of electronics, optics, and communication. Lithium niobate is used to produce high-performance devices such as high-speed electro-optic modulators and high-performance acoustic filters, which are applied in data centers, long-distance data transmission, mobile phones, base stations, etc., to meet the high bandwidth and high-frequency RF market requirements of the next generation of wireless networks.

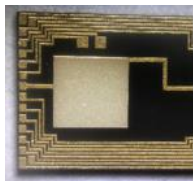


**COREWAY OPTTECH CO., LTD**

A532

**Series D - AuSn Solder Integrated**

The process of integrating Gold-Tin (AuSn) solder products is to pre-form AuSn solder on thin-film circuit chips. AuSn solder has high thermal conductivity and excellent reliability of eutectic welding. It can be widely used in high-power LED, electric vehicle and other microelectronic fields. At the same time, it can also be used in the field of optical communications, lasers and other optoelectronic devices.

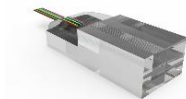


**SHANGHAI SUPERBOND NEW MATERIALS LTD**

A011

**5527B**

5527B is an epoxy adhesive used in fiber optic arrays. This product features excellent fluidity, a simple process, and is applicable to various specifications and models.



**EPOXY AND EQUIPMENT TECHNOLOGY PTE LTD**

B511

**EMIUV Optocast Adhesives**

EMIUV OPTOCAST range of adhesives are designed for fast, precision bonding and aligning of optoelectronic devices and components. These products feature low stress, optical clarity, minimal shrinkage upon cure, extremely low CTE values, and excellent moisture resistance. Available in a wide range of physical properties and curing options, there is an OPTOCAST adhesive for virtually any optoelectronic application or manufacturing process.



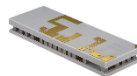
# Optical Communication Chip

## HANGZHOU ADVANCED THERMAL TECHNOLOGY CO., LTD

A321

TEC

The product has the characteristics of high reliability, good stability, strong consistency, long life, fast refrigeration speed, good time response, deep refrigeration temperature and high efficiency



## WOORIRO CO., LTD

B103

CWDM Chip

CWDM Mux/Demux chips are bi-directional passive optical multiplexers and demulti-plexers allowing multiple optical signals at different wavelengths. The grating combines or separates up to 4 different wavelength signals

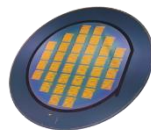


## WUHAN ANPI OPTOELECTRONICS CO., LTD

A006

Thin Film Lithium Niobate Modulator Chips

Thin-film lithium niobate 4/8-channel array modulator chip, ultra-high bandwidth, small size, low driving pressure, based on 8-inch tape-out process, large production capacity, high yield, suitable for 200G/Lane and 400G/Lane high-speed optical transceivers.

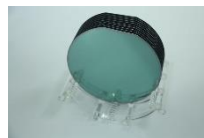


## SHANGHAI NOVEL SI INTEGRATION TECHNOLOGY CO., LTD

A201

4/6/8-inch TFLT

Lithium Tantalate (LiTaO<sub>3</sub>) exhibits excellent piezoelectric, ferroelectric, acousti-optic and electro-optic effects. Acoustic-grade Thin-film Lithium Tantalate (TFLT) can be used to manufacture acoustic resonators and filters with high-frequency and wideband, which are applied in important fields such as mobile communications. Also, TFLT, with its low optical loss, low birefringence and outstanding electro-optical conversion properties, has become one of the core materials for next-generation integrated photonic and quantum devices



# Optical Communication Module

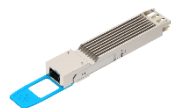
## Transceiver

**GUANGZHOU VISINT COMMUNICATION  
TECHNOLOGY CO., LTD**

A104

**Optical Transceiver**

Provides optical transceiver covering 1G to 800G at full rates to meet the differentiated requirements of data centers, 5G bearer networks, enterprise networks and industrial interconnection scenarios.

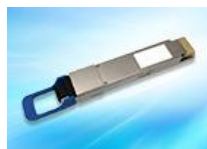


**FIC GLOBAL, INC.**

A521

**High-Speed Optical Transceiver  
PCBA & Turnkey Manufacturing**

We deliver complete Turnkey manufacturing from design engagement to mass production. Our strengths include high-density PCBA, Flip-Chip, 008004 ultra-miniature placement, and full automated inspection. Supporting 100G-1.6T optical transceivers, we ensure stable quality, flexible supply chain management, and reliable high-volume delivery.



**T&S COMMUNICATIONS CO., LTD.**

B202, B201

**800G QSFP-DD Fiber  
Optic Transceiver**

This transceiver is an 8-Channel, Pluggable, Fiber Optic QSFP-DD transceiver for 800Gbps SR8 Applications. It is a high performance module for short-range data communication and interconnect applications which operate at 106.25Gbps per lane up to 30m using OM3 fiber and 50m using OM4 fiber. The optical interface uses MPO receptacles. This module is designed to operate over multimode fiber systems using a nominal wavelength of 850nm. The electrical interface uses a 76-contact edge type connector.



**FLYIN GROUP CO., LTD**

A213, A214

**Optical Transceiver**

Optical Transceivers stand out in the market for their compact size, hot-swappable design, and versatility. They support high-speed data transmission over various distances and media types. Cost-effective and energy-efficient, SFP modules offer flexibility in network upgrades and expansions, ensuring seamless integration and scalability.



# Optical Communication Module

## GUANGZHIMU

C306

1×4 Module

Miniaturization and lightweighting of large-scale optical systems. All-solid-state optical path with extremely low mechanical noise. Materials with low thermal expansion coefficients, such as quartz ceramics, ensuring extremely high environmental stability.



## SHENZHEN LIANWANG RUIJIE COMMUNICATION TECHNOLOGY CO., LTD

A808-5

SFP Optical Modules

As the source factory of SFP optical modules, our products are compatible with mainstream switch brands, covering 100M/Gigabit specifications, supporting multi wavelength and multi transmission distance customization, and are characterized by low power consumption, high stability, and strong anti-interference. It is widely used in data centers, optical fiber communication systems, security monitoring, intelligent transportation and other scenarios to provide efficient and reliable optical transmission solutions for optical fiber network connection.



## KOREA ADVANCED MATERIALS CO., LTD

B102

AWG Module

KAM's unique technology of PLC (Planar Lightwave Circuit) and AWG allows us to produce key components for long haul, front haul and Metro network construction. Our AWG product is designed to support 5G and 6G networks, and suitable for use in various settings, with industrial temperature support and high-power capabilities. Our silica-on-silicon Planar Lightwave Circuit DWDM Mux/Demux AWG chips and modules support 50, 100, and 200 GHz, point-to-point WDM optical links for long haul/5G mobile front haul networks. Our AWG product ensures your network operates at peak performance, with fast and reliable data transmission, even in harsh industrial environments.



## TIANFU XINGLONG LAKE LABORATORY / GUANGSHENG TECHNOLOGY (SICHUAN) CO., LTD.

C006

Thin-Film Lithium Niobate  
Electro-Optic Modulator

The thin-film lithium niobate electro-optic modulator is based on Lithium Niobate on Insulator (LNOI) technology. It inherits most of the advantages of traditional lithium niobate modulators while featuring a compact size, low drive voltage, and low optical loss. The phase shift of this device is adjusted via an integrated low-power heating element, ensuring stable operation at the bias point throughout its entire service life.



# Optical Communication Device

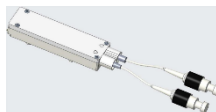
## Active Device

**HIIC-TECH(QINGDAO)MICROELECTRONICS CO., LTD**

A808-7

**DWDM Optical Module**

DWXX11001-CFYXXX is a high-performance DWDM optical transceiver module. The transmitter utilizes an EML laser, and the module incorporates a built-in temperature control circuit. The receiver employs a high-sensitivity ROSA to enhance link budget. The electrical interface uses a 12-pin pin header, while the optical interface adopts an FC connector. High-speed signal pins operate on AC-coupled CML levels, and the module features I2C communication, with an operating temperature range of -40°C to 70°C.



**YOEC-SPECIALTY FIBER**

D212

**Optical Module for FOG**

This series optical module is an optical component applied to ultraminiature closed-loop fiber optic gyroscope (FOG) and also a special optical module that is fused and assembled by fiber-optic coils and optical devices (Y-waveguide, coupler, photodetector, light-source) in the order of gyroscope's optical path. It can replace fiber-optic coil, Y-waveguide and other separated parts for direct modular installation on the gyroscope, thus simplifying the assembly process of the gyroscope.

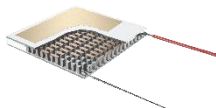


**HANGZHOU ADVANCED THERMAL TECHNOLOGY CO., LTD**

A321

**Thermoelectric Modules**

The product has the characteristics of high reliability, good stability, strong consistency, long life, fast refrigeration speed, good time response, deep refrigeration temperature and high efficiency



**WUHAN OPTOELECTRONICS CO., LTD**

A006

**Thin Film Lithium Niobate IQ Modulator**

IQ modulation is realized based on dual-channel parallel thin-film lithium niobate optical intensity modulation, which has a wide range of applications in coherent communication, single-sideband modulation, carrier suppression, linear modulation, etc., and has the characteristics of large bandwidth, low driving voltage and high stability.



# Optical Communication Device

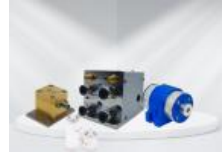
## Active Device

### WAVELENGTH OPTO-ELECTRONIC (S) PTE. LTD

B514

#### Optical Modulators

Optical modulators are essential components in the manipulation and control of light in optical systems. These devices are commonly used in laser systems, telecommunications, and scientific research, playing key roles in modulating, isolating, and directing light beams with precision. Optical modulators provide comprehensive solutions for managing light in complex optical systems, offering control, protection, and optimization for a wide range of photonic applications.



### NINGBO GMF TELECOM TECHNOLOGY CO., LTD

A805

#### Pre-connected NAP

16F Nap, with pre-connected adaptor, integrated with 1x16 splitter

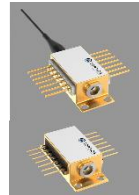


### PRECISION TECHNOLOGIES PTE LTD

B323

#### Topica Eagleyard miniTA, miniECL, DFB Laser Diodes, Tapered Amplifiers, Multimode Laser Diodes, Gain Chips

TOPTICA EAGLEYARD is a global leading provider of high power laser diodes with wavelengths from 630 nm – 1120 nm based on GaAs (Gallium Arsenide). Our products combine maximum power, highest durability and excellent beam quality – a perfect match for high-end applications. Our newest product launches: Our fiber-coupled miniECL for an easy plug & play solution with our miniTA family is available at many wavelengths. New: miniTA at 810 nm.



### WOORIRO CO., LTD

B103

#### SPAD (Single-Photon Avalanche Diode)

InGaAs/InP Geiger-Mode Avalanche Photodiode Optimized for 1000 to 1600nm Wavelength 10MHz ~ 1GHz Gating Frequency Operation Built-In 3stage TEC (Thermo-Electro Cooler)





# Optical Communication Device

## Passive Device

**EDMUND OPTICS SINGAPORE PTE LTD**

**B303**

**Waveplates**

Waveplates, also known as Retarders, are used to transmit light while modifying its polarization state without attenuating, deviating, or displacing the beam. Waveplates are commonly used to rotate linear polarization or transforming linear polarization into circular polarization, and can be used in optical isolators. Retarders are designed to operate with light that have existing polarization states. Using a Waveplate with unpolarized light will not have any impact on its polarization state and the light will remain unpolarized. Waveplates consist of birefringent, crystalline or polymer materials that create a phase shift between the polarization components.



**LAMBDA GLASS SOLUTIONS GMBH & CO.KG** C206

**3D Quartz Glass Fiber Ferrules**

Our 3D quartz glass fiber ferrules are engineered for ultra-precise fiber positioning and robust optical performance. Manufactured from high-purity fused silica, they offer exceptional thermal stability, chemical resistance, and minimal optical loss. The advanced 3D-structured geometry ensures accurate alignment, reliable bonding interfaces, and compatibility with complex photonic and microfluidic assemblies. Ideal for high-density coupling, precision sensing, and demanding semiconductor applications.



**SHAOXING BEECON CONNECTIVITY TECHNOLOGY CO., LTD.**

**A012**

**16F MPO Ferrule**

Single mode or multi-mode, common loss or low loss are available. High-precision molding, low-loss output. High mechanical strength, low ferrule weight. High-precision PIN pinholes, low concentricity. Resistant to high temperature, corrosion and flame, with good environmental stability. The mold markings can indicate the fiber type and ferrule grade.



**XIAMEN BELY INFORMATION TECHNOLOGY CO., LTD**

**A634**

**Passive Components: PWDM, PLC, Coupler, TAP, MUX**

Belycomm Passive components are engineered for seamless integration and optimal performance in dense wavelength division multiplexing applications, delivering precision and versatility that surpasses industry expectations.



# Optical Communication Device

## Passive Device

**SHENZHEN TONGXIN OPTICAL  
COMMUNICATION TECHNOLOGY CO., LTD**

A116

**PLC Splitter Module**

1x2 1x4 1x8 1x16 1x32 1x64 single mode APC UPC steel tube fiber  
optical with without connector mini beam PLC splitter



**SHENZHEN LUCENTFIBER OPTICAL  
TECHNOLOGY CO., LTD**

A808-2

**PLC Splitter**

PLC Splitter is a core passive component in FTTx networks. Based on quartz glass waveguide technology, it features low loss and wide wavelength compatibility. PLC splitter achieves optical signal distribution and combining through cascading of the basic 1x2/1x3/1x4/1x6/1x8/1x12/1x16/1x32/1x64 structure. We are good at producing the high quality PLC splitters in PIPE, ABS, cassette, LGX and 1U chassis. Average LT is about 10 days for 3K pieces.



**QINGDAO SUNET TECHNOLOGIES CO., LTD**

A601

**PLC Splitter**

Planar waveguide light optical distributor (PLC Splitter), is a kind of planar waveguide integrated optical device, it can be 1260nm ~ 1650nm such a wide range of wavelengths of light power reservation in realization, the distribution of wavelength range covers EPON technology used 1310nm, 1490nm and 1550nm three wavelengths. Especially suitable for EPON Ethernet passive optical network access technology FTTP fiber network system, broadband passive optical distributor (POS) use. All our products comply with the international quality standard and are greatly appreciated in a variety of different markets throughout the world!



**CHAIN STEV INDUSTRY CO., LIMITED**

A501

**Fiber PLC Splitter**

PLC optical splitter is an optical power management device manufactured using silica optical waveguide technology. It boasts features such as compact size, high reliability, a wide operating wavelength range, and excellent channel-to-channel uniformity, and is widely used in PON networks to split optical signal power. It divides fiber bundles into multiple sub-bundles at a specified splitting ratio, serving as a key passive component in passive optical networks. All products comply with the requirements of GR-1209-CORE-2001 and GR-1221-CORE-1999.



# Optical Communication Device

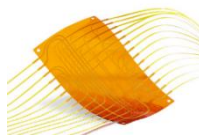
## Passive Device

**T&S COMMUNICATIONS CO., LTD.**

B202, B201

**Fiber Optic Flex Circuit (FOFC)**

The Fiber Optic Flex Circuit (FOFC) addresses the need for effective cable management, enabling optimal airflow and efficient routing within communication systems. It provides a streamlined solution for routing fiber from board-to-board, shelf-to-shelf, or within narrow and irregular spaces, ensuring organized and compact fiber pathways.

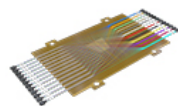


**SHENZHEN ADTEK TECHNOLOGY CO., LTD**

A111

**Adtek Optical Fiber Flex Circuit**

Adtek Optical Fiber Flex Circuit with thin film structure is a type of Fiber Shuffle, and it's also an innovative solution for card-to-card, shelf-to-shelf, and confined space cabling, that achieve optical cross-connect on flame-retardant substrate with integrated connection. On the one hand, a flexible backplane can realize thousands of optical fiber cross-interconnection, which not only has the advantages of simplifying optical fiber wiring management, flexible vibration resistance, etc., but also greatly saves wiring space; On the other hand, users don't need to manually jump fibers, but only need to pay attention to the uplink and downlink interfaces.



**BEIJINGAUMIWALKER TECHNOLOGY CO., LTD.**

A808-10

**Bias-Tee**

50-ohm load · Up to 110GHz Total 8 · Excellent Group Delay for All-band · Excellent VSWR, insertion loss, isolation · Four different configuration interfaces · High RF performance, ultra-competitive price · Connector types include SMA, N-type and SMK

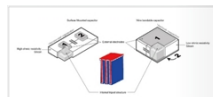


**SUZHOU SENWAN ELECTRONIC TECHNOLOGY CO., LTD**

C321, C322

**Silicon Capacitor**

Senwan's excellent design and manufacturing capabilities enable to silicon capacitors for diverse SIP packaging applications. Our capacitors includes both of standard type and customized solutions, with a BV range from 1500V (high voltage) to 3V (low voltage). can be Integrated with resistors, inductors and NTC for most of industry applications. Over 1200V high-voltage RC snubber: For SiC power modules 50V-250V medium-voltage capacitors (single/multi pad): For RF & optical chip packaging Under 11V low-voltage capacitors (excellent ESL/ESR): High-performance for high-frequency signal transmission in chip-scale power management modules We also provide more product solutions for customized development with our customers



# Optical Communication Device

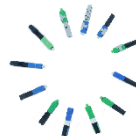
## Passive Device

**BENGBU HUAXING ELECTRONIC  
NETWORK CO., LTD**

A624

**Fiber Optic Quick Connector**

A Fiber Optic Quick Connector, commonly known as a Field Assembly Connector, is a revolutionary solution for fiber optic termination. Its core design purpose is to enable rapid and simple fiber connection and termination at the installation site, without the need for fusion splicers or complex epoxy curing processes. Key Features: 1. Rapid Installation 2. Ease of Operation 3. High Cost-Effectiveness 4. Stable and Reliable Performance 5. Flexibility and Portability In summary, with its efficiency, convenience, and economy, the Fiber Optic Quick Connector has become an indispensable component in modern optical fiber access networks.



**BOXIANG OPTICAL COMMUNICATION  
EQUIPMENT (GUANGZHOU) CO., LTD**

A612

**Optoelectronic Hybrid Connector**

Optoelectronic hybrid cable: Integrating optical fiber and copper power transmission wires, one cable interface meets the needs of broadband access, equipment power supply, and signal transmission between the master FTTR and the slave FTTR. The cable can support a maximum power supply of 150 meters and has a minimum bending radius of 42mm. It is used for whole-house fiber FTTH transmission connection, and for the connection between switches and central office modules



**TUOLIMA**

A808-3

**3-in-1 IP68 Waterproof Connector**

As a new-trend product, Tuolima's 3-in-1 IP68 waterproof connector is pre-terminated, enabling quick installation without field splicing. Its biggest advantage lies in saving labor costs while ensuring reliable and durable performance for indoor and outdoor fiber networks.



**NINGBO JITONG ELECTRONICS CO., LIMITED**

A807

**Fast Connector**

Model: SC Type; Fiber Optic Place of origin: Zhejiang, China Brand name: Jitong Usage: Fiber to the Home Insertion loss:  $\leq 0.3\text{dB}$  Return loss:  $\geq 50\text{dB}$  Port: Ningbo or Shanghai



# Optical Communication Device

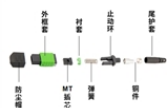
## Passive Device

### BOXIANG OPTICAL COMMUNICATION EQUIPMENT (GUANGZHOU) CO., LTD

A612

MPO

Multi-fiber Push On, a precision-machined component primarily used for high-density optical fiber connections. Its main components include MT ferrules, stop rings, PIN needles, sheaths, springs, and dust caps. It is widely used in environments requiring high-density integrated optical fiber circuits during cabling, such as data centers, AI server connections, high-speed signal connections between buildings, as well as connections within data centers for optical modules and optical links.



### NINGBO LITAS OPTICAL TECHNOLOGIES CO.,LTD.

A808-20

### Non-Contact MPO Fiber Connector

The non-contact MPO fiber-optic connector, invented by a team led by Dr. Jianbin from Litas Optics, is a product of significant original innovation. It addresses a major technical challenge of MPO multi-fiber connectors worldwide, filling a long-standing gap in the industry. This product series is not only compatible with traditional physical-contact connectors, but also effectively protects fiber end faces from damage, offering the following key advantages: · Long mating lifetime · Excellent dust resistance · High repeatability and interchangeability · No damage to the end face of the device under test



### NINGBO GMF TELECOM TECHNOLOGY CO., LTD

A805

### Micro Duct Connector and Cap

Micro-duct connector and cap, its designed for brow-cable duct connection. multiple size are available. 16/14 14/12 7/3.5 7/4 ....

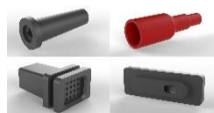


### FUZHOU JING AN TECHNOLOGY CO., LTD.

A014

Boot

This boot features exceptional aging resistance, meeting the 2000-hour high-temperature and high-humidity test as well as thermal cycling requirements. It offers excellent UL 94 V-0 flammability rating and complies with the latest EU environmental regulations, including RoHS and REACH. Its superior rigidity effectively protects the optical fiber from damage.



# Optical Communication Transmission Equipment

## WDM

**SHENZHEN ISEELINK  
COMMUNICATION CO., LTD.**

A115

**OSP3800 CWDM/DWDM Wavelength  
Division Transmission Equipment**

The OSP3800 is a high-capacity CWDM/DWDM integrated transmission platform supporting 1.25G/10G/25G/100G/200G/400G. Available in 1RU/2RU/3RU/5RU chassis, it integrates EDFA/RFA/OLP/OADM/MUX&DEMUX/AAWG/VOA/OTU boards, offering rich management and protection functions. It can provide operators with end-to-end OTN/CWDM/DWDM backbone transmission solutions, enabling high-capacity scheduling and ultra-wideband intelligent transmission. It is primarily used for backbone lines, metropolitan area networks, and data center interconnection transmission.



**GUANGZHOU VISINT COMMUNICATION  
TECHNOLOGY CO., LTD**

A104

**Vispace1000 DCI BOX**

DCI BOX is a white-brand WDM transport product suitable for telecom operators, government and enterprise networks, and private 5G networks. DCI BOX can expand existing network capacity by adding 100G/200G/400G wavelength channels without replacing existing OTN/DWDM infrastructure, making it a cost-effective upgrade solution. It provides the flexibility to seamlessly integrate different vendors' hardware on the same network, resulting in a vendor-neutral Open Line System solution.



**FLYIN GROUP CO., LTD**

A213, A214

**WDM**

WDM, or Wavelength Division Multiplexing, boasts several key advantages in the market. It significantly increases fiber transmission capacity and efficiency by combining multiple wavelengths of light into a single fiber. It offers cost savings, high reliability, and flexibility. WDM supports diverse network services, enables ultra-long-distance transmission, and facilitates seamless upgrades and expansions, making it a cornerstone of modern optical communication networks.



**SHENZHEN LUCENTFIBER OPTICAL  
TECHNOLOGY CO., LTD**

A808-2

**FWDM / CWDM /  
DWDM MUX DEMUX**

FWDM, CWDM, DWDM multiplexers are a low-cost WDM transmission technology for the metropolitan area network (MAN). It transmits by multiplexing different wavelengths to one single fiber. They are widely used in front-haul deployment. The technology has low requirements on the laser and effectively reduces the network operation cost and improve the system reliability. There are Pipe, ABS, LGX, Cassette and 1U chassis types. Wavelengths, logo and packages can be customized. Lucentfiber is one of the best producers of mux demux in the market. You can find high quality products with good quality, price and lead time here.



# Optical Communication Transmission Equipment

## HUNAN ZIKUN INFORMATION TECHNOLOGY CO., LTD.

A622

ZC-521X6D(ONU)

ZIKUN ZC-521X6D is a dual-mode (XPON) Gigabit WiFi6 ONU that supports automatic switching between GPON and EPON modes. It provides 4 Gigabit Ethernet ports and concurrent dual-band wireless 11n 2.4GHz (2x2) and 11ax 5GHz (2x2). It focuses on high-speed wireless connection and Mesh networking functions. Its wireless rate reaches 3000Mbps, supports 160MHz bandwidth and concurrent transmission of multiple devices, and is compatible with Wi-Fi 6 technical standards.



## XINDATONG

A806

**AX3000 Router 2.5GE WAN+4GE LAN+AX3000 WiFi6 +Mesh R5**

Network interconnection connects LANs and WANs (such as broadband), enabling data transfer between different networks. Data forwarding selects the optimal path based on the destination address, rapidly transmitting data packets. Multi-device sharing allows multiple devices (mobile phones, computers, smart devices, etc.) to access the same network simultaneously. Network management supports basic network configuration functions such as IP allocation, port mapping, and traffic control. Broad compatibility supports multiple connection methods, including wired (Ethernet) and wireless (Wi-Fi), adapting to a variety of devices. It can meet the network needs of various scenarios, including homes, offices, and small computer rooms. Easy to expand.



## GLOBAL COMMUTECH PTE LTD

B632

**HAPS Laser Communication Terminal**

HAPS Laser Communication Terminal is an advanced communication relay system specifically designed for high-altitude environments. It can be mounted on high-altitude aircraft platforms to achieve stable and high-speed air-to-ground data transmission.



## SHENZHEN LIANWANG RUIJIE COMMUNICATION TECHNOLOGY CO., LTD

A808-5

**Industrial Switch**

As the source factory of industrial Ethernet switches, our products adopt industrial grade enhanced design, with dust-proof and moisture-proof, wide temperature, high protection, anti-interference characteristics, and can adapt to complex and harsh working conditions; Equipped with high-speed forwarding engine, PoE power supply and link redundancy backup are supported, and the transmission is stable and reliable. It is widely used in intelligent manufacturing, power energy, rail transit, security monitoring and other fields to provide high toughness network connection solutions for industrial scenarios.





# Optical Fiber Cable

## Patch Cord

**SHENZHEN TONGXIN OPTICAL  
COMMUNICATION TECHNOLOGY CO., LTD**

A116

**MPO/MTP Fanout Patch Cord**

MPO Fanout Hybrid Patch Cord is mainly used to connect QSFP and SFP modules, or MPO and the LC connectors. Normally OD of the fanout cables is 2.0mm.



**QINGYUAN CYS COMMUNICATION CO., LTD**

A202

**Optical Patchcords With MPO  
Push-pull Boot Connectors**

This MPO Push-pull patchcords used own designed MPO connectors are easier insertion and extraction in ultra-high density applications. It has the advantage of stable transmission, high reliability and customization. It is widely used in optical network scenarios such as Backbone Network, ODF and Data Center etc.



**PUYANG YRT COMMUNICATIONS  
TECH CO., LTD.**

A631, A632

**Fiber Optical Patch Cords**

OM3: Effective modal bandwidth (EMB)  $\geq 2000$  MHz·km, supporting 10Gb/s transmission to 300 meters, 40Gb/s to 150 meters, and 100Gb/s to 100 meters. OM4: EMB  $\geq 4700$  MHz·km, supports 10Gb/s to 550 meters, 40Gb/s to 400 meters, 100Gb/s to 150 meters, with better performance. Laser Optimized Multimode Fiber (LOMMF): Optimized for VCSEL laser light sources, reducing modal dispersion (DMD).



**HC FIBER HOME  
TECHNOLOGY(DONGDUAN) CO., LTD**

A102

**5G Base Station Outdoor  
Waterproof Patch Cord Series**

Engineered specifically for harsh outdoor environments, these patch cords feature IP67-rated water and dust protection with excellent UV resistance. They provide low insertion loss and high tensile strength, ensuring stable, long-term signal transmission for FTTA (Fiber-to-the-Antenna) and 5G base station deployments.



## Cable & Wire

### YOEC-SPECIALTY FIBER

D212

### Panda Polarization-maintaining Fiber

Ultra-Fine diameter panda polarization-maintaining optical fiber for fiber optic gyro coil is primarily aimed at the high-precision, miniaturization, and cost-effectiveness requirements of fiber optic gyros. It provides 40-micrometer and 50-micrometer diameter polarization-maintaining fiber to meet the winding requirements of various small-sized coils. Specifically, the 50/80 size series of polarization-maintaining optical fibers are compatible with mainstream fusion splicing equipment and can be seamlessly connected with 60/100 waveguide fibers.

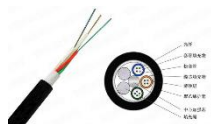


### ANHUI XINMAI OPTOELECTRONICS TECHNOLOGY CO., LTD

A008, A009

### GYFTZY

The product has good mechanical properties and temperature characteristics, the loose casing material itself has good hydrolysis resistance and high strength, a single steel wire as a longitudinal central strength member



### JIANGSU TONGGUANG OPTICAL FIBER CABLE CO., LTD.

A523

### ADSS

TGC ADSS has high tensile strength. Under the condition of the same tensile strength, the outer diameter of the TGC ADSS optical cable is smaller, but the remaining length can still be controlled within 0.8% - 0.9%. At the same time, it has a relatively light weight, which can reduce the influence of ice and wind. TGC ADSS cable is produced by vacuum-sealing the outer sheath through extrusion. This process ensures that the cable core remains in the center position, guarantees the roundness of the cable and the uniformity of the sheath, and ensures the service life.



### HUIZHOU C-FLINK TECHNOLOGY CO.,LTD

A103

### 1.6T OSFP224 ACC

Compliant with InfiniBand XDR and IEEE802.3dj specification requirement 8x200G-PM4 to 8x200G-PM4 Provide excellent mechanical durability and shielding, reduce crosstalk, transmission distance up to 3 meters; Compliant with hot-pluggable OSFP MSA standard Operating temperature: 0°C-70°C



## Cable & Wire

### HC FIBER HOME TECHNOLOGY(DONGDUAN) CO.,LTD

A102

### SMA Large-Core Energy Transmission Fiber Series

Utilizing premium large-core fibers, this series offers an exceptionally high laser damage threshold and superior heat dissipation. With precision SMA connectors ensuring high coupling efficiency, it is the ideal solution for high-energy laser delivery in industrial processing, medical surgery, and spectral detection applications.



### TUOLIMA

A808-3

### Hybrid Fiber Optic Cable

Tuolima hybrid fiber optic cable integrates optical fibers and power conductors in one design, enabling simultaneous data and power transmission. It simplifies network deployment, reduces installation costs, and is ideal for FTTA, CCTV, and outdoor broadband applications.



### BENGBU HUAXING ELECTRONIC NETWORK CO., LTD

A624

### Fiber Optic Patch Cable

Fiber optic patch cables, also known as fiber jumper cables, are cables terminated with connectors on both ends, designed for quick and flexible connections between equipment and patch panels. Their key characteristics include: 1. High Efficiency & Low Insertion Loss 2. High Reliability & Stability 3. Flexibility & Convenience 4. Diverse Variety 5. Superior Performance of APC Connectors. In summary, the fiber optic patch cable is an indispensable passive component in optical networks. It ensures the efficiency and stability of optical communication links through its low loss, high reliability, and flexible connectivity.



### FUJIAN MLCABLE ELECTRONIC TECHNOLOGY GROUP CO.,LTD

A808-12

### 110GHz High Precision Armored Test Cable

Mlcable AT110 series armored precision test cable uses low loss, phase and amplitude stable cable, coupled with multi-layer composite armor protection. It has excellent mechanical properties in reliable structure, water and oil proof, abrasion, compression and torsion resistance, and good durability, as well as excellent electrical performance in low VSWR, low loss, high shielding effectiveness, and stable amplitude and phase, especially in the room temperature range (-10 °C~+30 °C), the phase change rate is less than 100ppm. It is your ideal choice for the testing of 110GHz products in laboratory and production line.



# Wiring Product

## Distribution Box/Patch Panel

**QINGTIAN YOOHON TECHNOLOGY CO., LTD**

A604

**Fiber Optic Network Cabinet**

The network cabinet is made of cold rolled steel sheet, with exquisite design, precise dimension and craftsmanship. It has lockable door, fully adjustable vertical mounting rails, and swiveling wheels. The color, height, width and depth can be customized, with full range of optional accessories. It has good compatibility and perfect ventilation. It complies with IEC 62321-2 standard. It has been sold to various countries in the world.

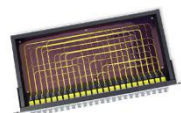


**T&S COMMUNICATIONS CO., LTD.**

B202, B201

**1U High Density  
Fiber Optic Enclosure**

The T&S Ultra Series 1U Rack Mount Fiber Enclosure is designed to house up to four Ultra Family module cassettes or fiber adapter panels, providing a flexible and modular solution for diverse fiber optic patching and termination needs. The series' great interchangeability ensures easy and smooth upgrading, making it an ideal choice for backbone cabling, distribution, or cross-connect applications in both main and horizontal distribution areas.



**QINGDAO SUNET TECHNOLOGIES CO., LTD**

A601

**FTTH Box**

FTTH Box is used as a termination point for the feeder cable to connect with drop cable in FTTx network system. It integrates fiber splicing, splitting, distribution, storage and cable connection in one solid protection box. Water-proof design with IP-66 Protection level. Integrated with splice cassette and cable management rods. Manage fibers in a reasonable fiber radius condition. Easy to maintain and extend the capacity. Suitable for the fusion splice or mechanical splice. PLC Splitter can be installed as an option. Efficient cable management.



**SHENZHEN ADTEK TECHNOLOGY CO., LTD**

A111

**ADTEK Fiber Patch Panel\_GPX70**

It is precisely for these next-generation UHD data centers that we have engineered our groundbreaking modular patch panel, designed to deliver unparalleled performance and flexibility with an impressive capacity of up to 72 connections per RU. This modular patch panel is ideal for optical fiber backbone connection and distribution management in data centers. It seamlessly integrates into the Main Distribution Area (MDA), Intermediate Distribution Area (IDA), or Horizontal Distribution Area (HDA), enabling optimal interconnection and cross-connection between backbone optical cables and active devices. You can go beyond fixed configurations with the flexibility to mix and match modules.



# Wiring Product

## Distribution Box/Patch Panel

**NINGBO JITONG ELECTRONICS CO., LIMITED**

A807

**Fiber Distribution Box**

Application | FTTH project & FTTX Deployments | Optical LAN & WAN  
& CATV | Telecommunication Network | Local Area Network



**NINGBO JINBANG  
MACHINERY TECHNOLOGY CO., LTD**

A503

**1u Modular High-density  
Mpo Fiber Box with Cable  
Management Flip -96-Core, 1c**

Materials and structures; Shell material: cold-rolled steel plate, and the surface is sprayed with plastic. Structure: 1U according to the installation scale; Front-mounted wire-arranging flip device is convenient for hiding the aesthetics of the unified outlet of jumper wires, and 4-position metal lock module group and module box with two functions of fusion or MPO can be selected for metal stamping, and each module group or module box can be equipped with LC 24 cores, with a maximum of 96 cores.



**NINGBO GMF TELECOM TECHNOLOGY  
CO., LTD**

A805

**96F Closure**

DOME closure, Mechanical sealing, 96Fibers



**NINGBO LITAS OPTICAL  
TECHNOLOGIES CO., LTD**

A808-20

**Perforated Tube  
Fiber Protection Sleeve**

The hollow fusion splice protection tube uses a perforated metal tube as reinforcement, providing excellent thermal conductivity. During heating, molten adhesive flows through the perforations to fully encapsulate the fibers, forming a highly symmetrical 360° "protective cage." Each fiber has dedicated space, resulting in minimal added insertion loss. The rigid cage prevents external forces from affecting performance, even under compression. Perforation design precisely controls adhesive flow. The tube is compact, space-saving, and cost-effective to manufacture.



# Cable Manufacturing Equipment

## Fusion Splicer/Cutting Machine

**TIANJIN ELOIK COMMUNICATION  
EQUIPMENT TECHNOLOGY CO., LTD.**

A611

**IoT-enabled Fusion Splicer**

1. Centrally manage all devices under your account 2. Accurately locate the machine 3. Track Machine Movement History 4. Remote Lock/Unlock Function 5. Equipment Alarm Data Statistics 6. Remote access to splicing history, cleave angle and splice loss. 7. Splicing quality analysis



**ANHUI FIBERLINK COMMUNICATION  
EQUIPMENT CO., LTD**

A808-8

**Fully Automatic Polarization-  
Maintaining Fiber Fusion Splicer**

Fully automatic PM fiber splicers deliver fast, precision alignment of polarization axes, ensuring ultra-low loss and high extinction ratio. They simplify complex splicing, boost reliability, and enhance efficiency in sensing and specialty fiber applications.



**SIGNAL FIRE**

A808-18

**Fusion Splicer AI-9**

Signalfire fiber splicer AI-9 is a six-motor, fiber core alignment automatic fiber welding machine, with optical power, red light detection function. Industrial quad-core CPU, fast running speed, 5 seconds fast welding, 15 seconds fast heating, 5 inches high resolution LCD screen, 300 times magnification; The working efficiency is 50% higher than that of ordinary welding machine. Large-capacity lithium battery can be heated by fusion of about 260 cores, high altitude, desert, extremely cold and other harsh environment performance is still outstanding.



**BENGBU TENGYUE COMMUNICATION  
EQUIPMENT CO., LTD**

A808-9

**Fiber Optic Cutting Machine**

Used for fiber optic core cutting adhesive, suitable for MT, LC, SC, SN



# Optical Material

## ZHENGZHOU YUENENG OPTOELECTRONIC TECHNOLOGY CO., LTD

C001

### Cesium Lithium Borate Crystal

CLBO ( $\text{CsLiB}_6\text{O}_{10}$ ) is a nonlinear optical crystal renowned for its high laser damage threshold and wide transparency range down to the deep ultraviolet (180 nm). Its key advantages include effective frequency conversion (especially for Nd: YAG harmonics), moderate nonlinear coefficient, good chemical stability, and non-hygroscopic nature, making it a reliable choice for high-power UV laser applications.



## HENAN UNION PRECISION MATERIAL CO., LTD.

D136

### Synthetic Diamond Powder

Monocrystalline micron diamond powder, selects high quality synthetic diamond as the raw material, adopts different production processes and product standards according to the requirements of different industries and application fields.



## TIEWAY INC.

D106

### Gold Quartz Crystals

Gold quartz crystals, with low contact resistance, very high chemical stability and easy to deposit, are widely used for low-stress metal depositions such as gold, silver and copper.



## HENAN UNION PRECISION MATERIAL CO., LTD.

D136

### Diamond Suspension

Diamond slurry is widely used for precision polishing of optical components. It effectively removes surface imperfections and subsurface damage from materials like glass, crystals, and ceramics. The ultra-fine diamond abrasive particles generate extremely smooth surfaces with low roughness. This process significantly enhances surface finish, leading to superior flatness and excellent specular reflectivity. The resulting high surface quality is critical for optimal optical performance, minimizing light scattering and absorption. Proper selection of slurry parameters—particle size, concentration, and carrier fluid—is essential to achieve the desired surface integrity and final figure accuracy for demanding applications in lasers, imaging systems, and aerospace optics.





# Optical Component

## Lens

**EDMUND OPTICS SINGAPORE PTE LTD**

**B303**

**Imaging Lenses**

Imaging Lenses are used to view objects in imaging systems. Imaging Lenses are imaging components used in imaging systems to focus an image of an examined object onto a camera sensor. Depending on the lens, Imaging Lenses can be used to remove parallax or perspective error or provide adjustable magnifications, field of views, or focal lengths. Imaging Lenses allow an object to be viewed in several ways to illustrate certain features or characteristics that may be desirable in certain applications.

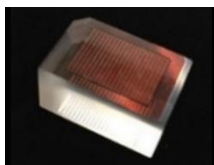


**AGC ASIA PACIFIC PTE LTD**

**A334**

**Glass Molded Microlens Array**

Diameter max.: 15mm x 20mm Diameter Tolerance:  $\pm 0.1\text{mm}$  Cell Size: 0.65mm x 0.65mm~1.5mm x 2mm Cell-pitch Accuracy:  $\pm 0.005\text{mm}$  Surface Accuracy: PV 1um Surface Roughness: Ra 20nm Centration between R1 and R2: 10um



**ECOPTIK (CHANGCHUN) LTD**

**B234**

**Micro Lens**

ECOPTIK can customize high-precision micro lenses with diameters ranging from 0.3mm to 5mm, using materials in the ultraviolet, visible, and infrared bands. Micro lenses empower medical devices with miniaturization, reconstruct optical communication with precision optics, and revolutionize imaging systems with aberration control, continuously pushing the boundaries of high-precision optical technology in the fields of life sciences, information transmission, and visual interaction.



**TECNOTTICA CONSONNI SRL**

**C205**

**Custom Spherical and Aspherical Lenses**

Manufacturing of custom coated and uncoated spherical lenses from dia. 3 mm up to dia. 350 mm made of optical glasses, fused silica or UV/IR materials. We manufacture our lenses with the most modern CNC technologies available on the market and our laboratories are fully equipped with the latest metrology systems (4" and 6" interferometers and Luphoscan 420). Thanks to our metrology department located beside our production area, we are capable to offer to our customers the maintaining of the highest optical standards for the most demanding optical applications.



# Optical Component

## Lens

### DXS OPTICS LTD

C331

### Aspheric Lenses

An aspheric lens varies continuously in its curvature from center to edge, and the radius of curvature varies with the central axis to improve the optical quality, which helps to minimize the number of optical lenses in optical accessories and reduce the production cost of the optical lenses. Aspheric lenses have unique advantages over spherical lenses and have great advantages in correcting spherical aberration. Therefore, aspheric lenses are widely used in optical instruments, focusing imaging and optoelectronics industry.

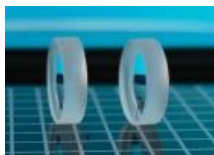


### CHANGCHUN YUTAI OPTICS CO., LTD

B221

### Optical Spherical Singlet Lenses

Optical lenses are optical components designed to focus or diverge light. Many industries utilize optical lenses, including life sciences, imaging, industrial and defense. As light passes through a lens, it is affected by the lens' profile or substrate. Yutai Optics offers a wide range of Optical Lenses in a variety of substrates or coating options. Substrates include optical glasses, fused silica, plastic and IR material.



### CHANGCHUN ZHIRAN OPTOELECTRONICS TECHNOLOGY CO.,LTD

B133

### Wide Band Deep Ultraviolet Objective Lens

Broad-band DUV lens with a spectral range  $266\text{nm} \pm 15\text{nm}$  with LED or Hg lamp illumination. It features a large numerical aperture (NA), long working distance, achromatism and high transmittance. and is suitable for wafer defect inspection, mask inspection, LED panel inspection, semiconductor packaging and other fields.

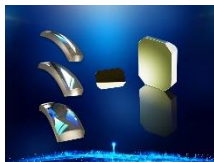


### CHANGCHUN GLITTER OPTICS CO.,LTD

B132

### Optical Components: Cylindrical Lenses, Spherical Lenses, Toric Lense, Prisms, Windows, , Mirrors, Filters and so on.

Glitter has variety of lens production lines and testing instruments. Our main products are cylindrical lens, spherical lens, window, mirror, prism, toric lens, aspherical lens and so on .The materials can be all kinds of optical glass and crystal, from deep UV to IR. These equipment are imported from Japan ,Korea and other countries. The coating machines are Oporun (Japan)and Haniil(Korea). The main testing instruments include ZYGO interferometer with CGH , Japan made transmission/reflection eccentric instrument , Shimadzu spectrometer and other testing equipment.



# Optical Component

## Lens/Window

**TIANFU XINGLONG LAKE LABORATORY /  
GUANGSHENG TECHNOLOGY (SICHUAN) CO., LTD.**

C006

**Wafer Level Metasurface**

The metalens is a two-dimensional planar lens structure composed of two-dimensional meta materials with subwavelength scale. It has the advantages of thin volume, light weight, low cost, good imaging, and easy integration. It can regulate the polarization, phase and amplitude of light, widely used in imaging, display, sensing, optical communication and other fields.



**YINGZHIYI**

C134

**Micro Lenses**

The micro lenses processing requires special capabilities and unique skills, we can reach the dimension of micro lenses as small as 0.5mm, these micro lenses also with short focal length, the short focal length and micro size make it used in lightweight and compact optical systems, such as medical, life sciences, industrial instruments.



**DONGGUAN ZHENJING  
OPTICAL TECHNOLOGY CO., LTD**

D035, D036

**Sapphire Windows**

It can be widely used in the fields of infrared and ultraviolet aerospace instruments, blast furnace temperature measurement, solar cell, watch, infrared military devices, scientific research, civil industry and high intensity laser and the other application.



**CLZ OPTICAL CO., LTD**

B222, B223

**Optical Windows**

Optical Window is an optical element with two parallel surfaces. It is often used as a protective window for optical equipment, electronic sensors, or detectors of the external environment. The optical window doesn't change the optical magnification, it only affects the optical path. The selection of materials is generally determined by the base material's mechanical properties and the material's transmittance. Common optical window base materials H-K9LN-BK7, B270, borate glass, UV Fused Silica, and infrared fused silica. Some windows will be coated on one side of the window depending on the wavelength used.



# Optical Component

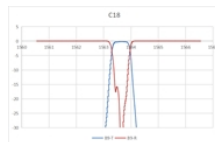
## Filter

**SHANGHAI HONGHUI GUANGLIAN  
COMMUNICATION TECHNOLOGY CO., LTD.**

A623

**DWDM 100GHz Filters**

1. Adopts high-precision thin-film filtering technology to achieve stable 100GHz channel spacing. 2. Supports ITU-standard C-band channels and is compatible with mainstream optical communication equipment. 3. Ultra-low insertion loss ensures signal transmission quality and system stability.



**CHROMA TECHNOLOGY CORP**

C207

**Optical Filters for Medical  
Instrumentation**

Instruments for medical diagnostics using in many cases optical pathways internally for both quantitative and qualitative analysis. Optical filters are a crucial part for these applications. Chroma Technology designs and supplies custom filters for medical diagnostics spectrally and physically customized according to the need of the market.



**SHENZHEN NANO MACRO OPTICS CO., LTD**

C003

**Narrow Bandpass Filter**

Nano Macro Optics employs advanced ion-assisted deposition (IAD) coating technology to manufacture narrowband filters, which feature high transmittance and deep cut-off depth.



**YANTAI JIEMIAN**

C531

**Quartz Laser Cavity Filter  
Multi-Hole Laser Flow Tube**

We can produce different size of laser cavity filter according to customer's requirement, single hole, double holes and triple holes. Based on the different application and other required properties, available materials are as below: • Borosilicate glass • Synthetic fused silica • Fused quartz • Cerium doped quartz • Europium doped quartz • Ti doped quartz • Samarium doped glass The laser cavity filter is one of the components for laser, and is widely used in the development of high power laser industry.



# Optical Component

## Mirror/Prism

**BLUE RESOURCE OPTICS (CHENGDU)  
CO., LTD.**

C101, C102

**Laser Scanner Mirror**

This laser scanner mirror, with "broad adaptability, high consistency, stable mass production" as core advantages, excels in the laser equipment supporting market. It fits laser marking, lidar, 3D scanning, etc., breaks single-scenario limits. Standardized production ensures uniform key parameters, cutting debugging costs. Mature mass production guarantees stable supply, shortening delivery cycles. It offers differentiated advantages, a preferred partner for manufacturers.



**BAITAI**

B123

**Custom-shaped Prism**

Machinable high-precision prisms refer to optical prisms that have the feasibility of practical mass production and customized processing, and can stably meet micrometer/nanometer tolerance requirements. Different from laboratory level ultra high precision prisms (only small batch trial production), they balance ultimate precision and manufacturability, and are the core components of commercial applications of high-end optical equipment. They are widely used in fields such as laser radar, lithography machines, satellite remote sensing, medical endoscopes, high-precision measuring instruments, etc.



**HONGCHENG**

D114

**Various Customized Prisms**

We support customization based on customer-provided drawings and can produce high-precision optical components according to customer needs



**PWT OPTICS**

C232

**Prism**

Angle tolerance:  $\pm 5''$  Surface quality: 1/10L



# Optical Component

## Automotive/Medical Optics

**FUJIAN FRAN OPTICS CO., LTD**

D223

**Lidar Optical Parts**

The high-precision lidar optical parts developed by Fran Optics 7 with severe environmental requirements all day, effectively avoid the reduction of signal-to-noise ratio of lidar system, and improving the accuracy of lidar system in detecting and identifying objects. They are widely used in robots, automobiles, industrial detection equipment, etc.



**FUJIAN FRAN OPTICS CO., LTD**

D223

**High-precision HUD Mirror**

HUD free-form mirror developed by Fran Optics uses industry-leading micro-nano processing technology and advanced coating technology to correct the image distortion caused by the windshield, thereby ensuring that the image is not distorted. AR-HUD free-form mirror with higher precision and larger size not only has a larger viewing angle, but also realizes the perfect coincidence of the real environment and virtual information.

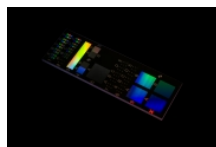


**IMT MASKEN UND TEILUNGEN AG**

C202

**LifeScience & Diagnostics**

Microfluidic-Multifunction-MEMS with Fluorescence pattern, channels, waveguides, calibration slide with nano-structured-patterning

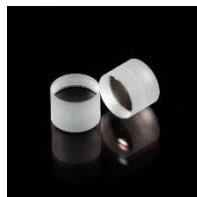


**NANJING LINGYINGCHUANG  
OPTOELECTRONIC TECHNOLOGY CO., LTD**

C234

**Medical Endoscope Lens**

Exquisite craftsmanship: Utilizing internationally leading processing technology and rigorous quality control procedures to ensure superior performance of the product. Customized services: Provide personalized design and manufacturing solutions based on customer needs, meeting the requirements of different application scenarios. Technological innovation: Continuously invest in research and development to drive innovation and advancement in endoscope lens technology. Quality service: Providing customers with comprehensive support, from product design to after-sales service.



# Optical Component

## AR/VR Optics and Optical Design Software

**HONGSHI**

D326

**Aurora Blink XC6**

Aurora Blink XC6, a core part of Hongshi's colorization strategy, is a trichromatic-combining full-color MicroLED micro display engine. It leverages a trichromatic light-combining scheme, precisely blending light from red (R), green (G), blue (B) monochrome MicroLED chips to render full-color visuals. It delivers 2,000,000 nits red luminance (the highest among monochrome products with pixel pitch  $\leq 4\mu\text{m}$ ), paired with 0.12-inch size and  $640 \times 480$  resolution. Boasting low power consumption and excellent imaging, it's already in the industry's top tier, expanding MicroLED's application scenarios.



**HONGSHI**

D326

**Aurora A6**

Aurora A6, Hongshi's 4-year R&D silicon-based MicroLED chip, adopts an 8-inch Wafer-level silicon substrate. Integrated with self-developed quantum dot conversion tech, it boasts process maturity enabling stable mass production. Boasting 8,000,000 nits, this 0.12-inch green chip features  $640 \times 480$  resolution, 6800 PPI, uniform image quality and low power consumption, fitting high-brightness scenarios like AR glasses.

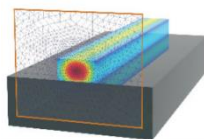


**ADVINNO TECHNOLOGIES PTE LTD**

B531

**Zemax**

Ansys Zemax OpticStudio® is the leading optical design software for developing, analyzing, and optimizing optical systems across industries such as aerospace, consumer electronics, and healthcare. It features tools like ray and wavefront analysis, physical optics propagation, and tolerance evaluation. Unlike other software, OpticStudio integrates advanced Multiphysics analysis (e.g., structural and thermal impacts), API automation, and comprehensive libraries of optical materials and commercial lenses. Its capabilities accelerate time-to-market, reduce prototyping costs, and ensure high-accuracy designs. With robust optimization tools and versatile configurations, it empowers engineers to create innovative solutions from simple lenses to complex Photonic systems.

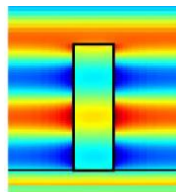


**ADVINNO TECHNOLOGIES PTE LTD**

B531

**Lumerical & SPEOS**

Ansys Lumerical and Ansys Speos combine cutting-edge photonic and optical simulation capabilities to empower engineers in designing innovative, high-performance systems. Lumerical excels in simulating optical and optoelectronic systems with advanced multi-physics modeling and quantum photonics tools, while Speos specializes in physics-based ray tracing for accurate lighting and optical system validation. Together, they address diverse applications, from photonic integrated circuits and meta surfaces to advanced lighting in automotive and aerospace industries. Seamlessly integrating with CAD environments and offering robust material libraries, these tools reduce prototyping costs, enhance design accuracy, and accelerate time-to-market, ensuring exceptional innovation in photonics and optical systems.



# Optical Component

## LEJ - LEISTUNGSELEKTRONIK JENA GMBH

C203

### LUXYR LED NANO

A unique selling point of the LED Nano is its ultra-compact high-performance VIS LED light source that replaces halogen/cold light with selectable LED types and color temperatures, delivers high intensity without heat, and supports triggerable, microscope-controlled operation for precise imaging applications.



## ASPHERICON GMBH

A224

### Custom Optics

Discover a large number of user-specific elements as well as off-the-shelf optics – from high-quality aspheres, axicons and aspheric cylinders through mirrors and reflectors to ultra-precise mounted optics, freeforms and doublets. With the latest technologies we manufacture optical components in various shapes for all wavelengths, using a wide range of materials from more than 100 optical glasses, crystals, polymers and ceramics to semiconductors and metals.



## BAITAI

B123

### Optical Integrator

Optical integrator, also commonly known as "homogenizer" or "integrator rod/mirror group", is an optical component used to convert non-uniform incident light into uniform outgoing light. Its core function is to achieve the homogenization of the light field, and it is widely used in photolithography, laser processing, projection display, illumination systems (such as microscopes and lithography machines), and other fields.



## SMARACT GMBH

A125

### Optical Assembly Solutions

With the growing demand for miniaturized, high-performance optical systems, precise and fully automated assembly solutions are essential. SmarAct optical assembly solutions provide state-of-the-art technology for nanometer-accurate alignment, positioning, and integration of optical components. Serving applications in photonics, laser technology, and fiber optics, our scalable automation concepts adapt seamlessly to your requirements. From modular building blocks to complete turn-key systems, we offer maximum flexibility and easy integration. For research institutes, system integrators, and industrial users, SmarAct delivers customizable, high-performance modules that can be individually configured and further adapted to meet specific application needs.





# Camera Lens

## MITUTOYO ASIA PACIFIC PTE LTD

A323

### Objective Lens (UV to Visible to IR)

Mitutoyo Optical's strength lies in its concentration of optical technologies, which is evident in the many achievements it has made in the industrial world, including measuring microscopes, image measuring machines, electronic semiconductor and liquid crystal related equipment, and visual inspection and various analytical equipment. FEATURE 01 Supports a wide range of optical wavelengths from ultraviolet to visible to near infrared FEATURE 02 World-class long working distance is the industry standard FEATURE 03 Transmission characteristics can be changed according to customer needs



## CHANGCHUN BOXIN PHOTOELECTRIC CO., LTD

B232, B233

### Lens Assembly

Changchun Boxin continuous zoom lens has a wide range of focal length and coverage. At present, there are a series of products such as 24 ~ 120mm, 10 ~ 150mm, 10 ~ 300mm, 18 ~ 500mm, 14 ~ 800mm, 20 ~ 1200mm, 32 ~ 1500mm, 200 ~ 2000mm, 500 ~ 2500mm, etc. In the field of telephoto lens, there are products suitable for almost all the focal lengths required.



## JIANGXI TRACE OPTICAL CO., LTD

D026

### TRC-F1007

The large-aperture 4K lens is designed for high-end dash cams and is paired with the IMX678 sensor. It is configured with an F1.70 aperture, 4K resolution, and a 140° wide-angle field of view, and is positioned as a flagship product in the dash cam vision industry.



## SHANGHAI SILK OPTICAL TECHNOLOGY CO., LTD

D112

### Black Light Lens

As a key component for black light-level cameras, it supports devices to deliver clear color images even in extremely low illumination environments when paired with ultra-sensitive sensors and other components. Compared with standard lenses and starlight-level lenses, it boasts higher low-light utilization efficiency, enabling full-color night imaging without relying on infrared supplementary lighting. Featuring a large aperture design to enhance light input, combined with technologies such as multi-layer broadband anti-reflective coating, it improves light transmittance and imaging stability in low-light conditions, and is often compatible with mainstream surveillance modules like M12 interfaces.



# Optical Processing Equipment

## OPTOTECH OPTIKMASCHINEN GMBH

A126

### SM 80 CNC-TC

3-Axis CNC-controlled generator for pre- and fine grinding of spheres and aspheres up to diameter 80mm. 3 spindles (1x workpiece spindle and 2x tool spindles). Pre- and fine grinding with cup grinding tools as well as edge processing and chamfering with form wheels. Fully automated processing possible with RPL 80 robot handling option.



## SATISLOH ASIA

C213

### SPM-10/SPS-10 Grinding & Polishing

The SPM-10 micro optics grinding machine extends grinding production capabilities to include complex, small lenses, non-linear shapes, and micro optics aspheres with maximum precision and best surface finishing. It allows for the production of micro optics spheres and aspheres from the submillimeter range up to 10 mm. The SPS-10 is designed for micro-optics with the highest demands on precision and diameters from below 1 mm up to 10 mm. Its processing possibilities include the dressing of tools with integrated dressing spindle, crosscut adjustment, & optional asphere and stemp polishing.



## SATISLOH ASIA

C213

### C-300 Centering

The C-300 high precision 7-axis centering machine processes various geometries including non-circular shapes and a wide range of diameters of 10–300 mm. The first centering machine to combine force-controlled grinding and full flexibility of CNC technology, paving the way for highest speed and best surface quality.



## AI PO LI INDUSTRIAL CO., LTD.

D005

### CNC Shape Glass Cutting Machine

CNC SHAPE GLASS CUTTING MACHINE adopts CNC controller, servo motor, and precision rack. The machine is suitable for cutting regular profiles and irregular profiles. The machine is equipped with air floatation device and vacuum system to facilitate glass delivery and secure glass when cutting so as to prevent the glass surface from being scratched. The machine is suitable for cutting large glass. The machine is popular with solar energy industry, home appliance industry and so on.



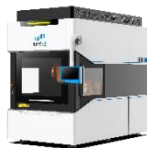
# Optical Processing Equipment

## SICHUAN GREENWICH OPTOELECTRONIC TECHNOLOGY CO., LTD

C104

## Intelligent Robot Polishing Equipment

Our intelligent robot polishing equipment is designed to handle lenses of varying sizes and precision requirements. We specialize in ultra-precision processing of optical components, including off-axis aspheric, cylindrical, free-form, and other complex surface types. A wide range of materials is supported, such as quartz, ULE, microcrystalline glass, silicon, SiC, sapphire, metals, and ceramics – including large-diameter and specially shaped lenses. Standard models include the IRB300, IRB600, IRB1000, and IRB1500. We also offer customized ultra-large-aperture processing equipment, currently capable of handling lenses up to 4 meters in diameter. we can achieve surface accuracy up to  $\text{RMS } \lambda/100$ .



## CHANGSHA AFISY TECHNOLOGIES CO., LTD

D222

## CCOS Polishing Machine For Precision Optics

Six axis linkage Double rotor polishing head Intelligent positioning of workpieces Deterministic polishing to achieve high-efficient and high-quality precision optical processing Machinable Surfaces: Plane, spherical, aspheric, off-axis aspheric, cylindrical, free form surfaces, etc. Machinable Materials: Quartz, zerodur, ULE, K9, sapphire, single crystal silicon, silicon carbide, ZnS, etc. Machining Features: Deterministic CNC polishing



## GUANGDONG KINGDING OPTICAL TECHNOLOGY CO., LTD

D111

## Freeform Surfaces (HUD) Precision Molding Machine MD12-180×120

The device is suitable for the mass production of high-precision glass free-form surface molding. The material is placed in the mold and then placed into the press chamber. It will be heated, pressed, cooled, and then removed in order. The production process is efficient, ensuring steady quality.



## CHANGZHOU KUAILE TECHNOLOGY CO., LTD.

D234

## KLDJ20SQ

KLDJ20SQ is a desktop cutting machine designed for the optical industry, which has the advantages of small size, quietness, and complete and smooth cutting surface



# Optical Processing Equipment

## Cleaning Product/Pad

**DONG GUAN SHENG  
FENG TECHNOLOGY CO., LTD**

D133

**Polyester Nylon Microfiber Wiper**

The microfiber cloth is soft and delicate, with strong cleaning power, making it a highly efficient optical glass cleaning cloth.



**DONG GUAN SHENG  
FENG TECHNOLOGY CO., LTD**

D133

**Cleanroom  
Polyester/Microfiber Swab**

Dust-free swabs are designed for cleaning tiny areas in harsh environments. They utilize advanced patented technology and are widely used in industries such as optoelectronics, semiconductors, computer hard drives, and medical devices.

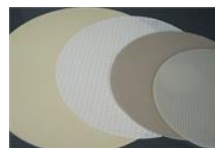


**HENAN UNION PRECISION MATERIAL  
CO., LTD.**

D136

**Diamond Lapping Pad**

Diamond Lapping pad belongs to the category of consolidated abrasive grinding technology. Based on a specially designed pad structure, it is made of diamond powder and resin, and can be used in the lapping and thinning process of hard and brittle materials such as glass substrates (microcrystalline, quartz, borosilicate, white board, sapphire), semiconductor wafers (monocrystalline silicon, silicon carbide), piezoelectric terminals (lithium tantalate), and precision ceramics (aluminum oxide, aluminum nitride, silicon nitride).



**WANHUA(CHANGZHOU)  
NEW MATERIAL TECHNOLOGY CO., LTD**

D202

**Polishing Pad**

It is belonged to Wax-Free Pad. It is an elastic adsorption material formed by medium-hardness resin, featuring uniform cells and a soft, fleece-like texture. The fleece surface can protect the workpiece during the polishing process. It is with thickness  $0.6 \pm 0.05$ mm, its Density 0.72 and Hardness 75. It is with compression Rate 15 and Compression Rebound Rate 90.



# Optics Fabrication

## MOVEON TECHNOLOGIES PTE LTD

B332

### Automotive Optics & Component Fabrication

Moveon leverages its in-house fabrication processes to manufacture high-quality optical components for automotive applications. Our expertise includes LiDAR sensors, heads-up displays (HUDs), and welcome-light projection systems, among others. These advanced optical solutions enhance vehicle safety, navigation, and driver experience. With a strong commitment to quality and environmental responsibility, we are proud to be ISO 9001, ISO 14001, and IATF 16949 certified, ensuring compliance with global automotive industry standards. Our rigorous quality control processes and innovative approach allow us to deliver precise, reliable, and high-performance optical solutions tailored to the evolving needs of the automotive sector.

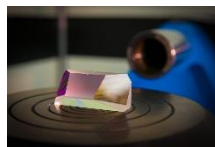


## UAB ALTECHNA

C214

### Optics & Optical Designs

Altechna products are designed and optimized for long-lifetime, high-power laser systems operating in the 193 nm to 3  $\mu$ m wavelength range. Our expertise in custom optical designs and high-damage-threshold coatings, combined with rigorous metrology, ensures precision, reliability, and repeatability from prototype to mass production.



### Design and Manufacturing Of Optical (Sub)systems and Components For Space and Semicon

## TNO SCIENCE AND INDUSTRY

C204

Central to the functionality of numerous scientific instruments are optical components. Encompassing spectrometric and imaging optics vital for diverse applications such as scientific research, astronomy, lithography, and space exploration. TNO Optics Manufacturing stands as a prominent expertise center specializing in the manufacturing and qualification of intricate optical components and coatings.



## CHANGCHUN AOYI TECHNOLOGY CO., LTD

B135

### Optical Centering and Assembly Service For Lenses

Centering Turning and Centering Assembly are used for the high-precision assembly of coaxial lens barrels. Centering turning is a secondary machining process for lens mounts. Its principle involves mounting a centering instrument on a high-precision lathe, adjusting the fixture to align the optical axis of the lens with the machine spindle, and then machining the mount accordingly. This process ensures superior coaxiality between the lens and barrel, significantly improving assembly accuracy.



# Optical Coating Service

## OPTO PRECISION PTE LTD

B533

## Advanced Coating Services

Our advanced optical coating services provide precise control over reflection, transmission, and durability, utilizing high-performance thin film coaters to create customized optical coatings such as dielectric, metallic, AR, beamsplitter, and filter coatings to enhance optical performance across the UV, visible, and IR spectrum; with state-of-the-art deposition systems, tight process and quality control, we ensure consistent coating uniformity, adhesion, and surface quality. Our engineering team collaborates closely with customers to optimize coating design for wavelength range, angle of incidence, and environmental requirements, enabling reliable performance in imaging, sensing, medical diagnostics, aerospace, semiconductor, and defense applications.



## CHANGCHUN BOXIN PHOTOELECTRIC CO., LTD

B232, B233

## Optical Coating

Boxin owns coating workshop, we supply design and manufacture High-Performance thin films service to our customers, includes the anti-reflection thin film, Semi-Reflective thin film, High-Reflective thin film, Filter thin film, Metal thin film, Polarized thin film, Non-Polarized thin film, depends on customers request and the wavelength range covers from DUV to FIR.



## TECNOTTICA CONSONNI SRL

C205

## Custom Optical Coatings

Application of custom anti-reflective, high-reflectivity or filter coatings up to dia. 350 mm. Thanks to our internal coating department, we can develop and apply custom optical coatings on the substrates manufactured internally or, as an alternative, on substrates coming from our customers. Our coating department is equipped with 2 coating chambers with evaporation and PIAD technologies and we can cover ranges from 300 nm up to 15  $\mu\text{m}$ .



# Optical Coating Equipment

## EVATEC AG

B502

## CLUSTERLINE® Family

CLUSTERLINE® are a family of platforms named according to their substrate size capability. All platforms share cluster architecture with cassette-to-cassette processing and fully automated handling. Production solutions on CLUSTERLINE® cross all 6 Evatec core markets. Whatever your application, our specialists can help you configure an ideal CLUSTERLINE® platform for you. We deliver complete process solutions including highly aligned magnetic films, high performance piezoelectrics like AlScN for broadband RF filters and highly efficient energy harvesting devices, high aspect ratio TSV metallization in Advanced Packaging or precise deposition of TCOs and multilayer dielectrics for the latest micro LED and 3D filter technologies.



## APP SYSTEMS SERVICES PTE LTD

B331

## Pfeiffer Vacuum HiCube Neo Turbopumping Stations

The Future of Vacuum Technology - Innovative turbopump units for precise high vacuum applications. Discover the HiCube Neo - our latest generation of turbopumping systems that combine outstanding performance, flexibility and user-friendliness in an innovative design. · Compact series of pumping stations for all high vacuum applications · Simple operation with touch display · Remote control via web server available · Reliable and robust



## BUHLER ASIA PTE. LTD

C224

## ALD 1200

Conformal optical coatings meet high throughput. Experience the most innovative Atomic Layer Deposition system for optical coatings - the Leybold Optics ALD 1200, our Plasma-Enhanced Spatial ALD system delivers ultra-thin, dense, and stress-controlled coatings on micro-structured and curved 3D substrates – double-sided in a single pass. With high deposition rates on 8 substrates of up to 300 mm, process temperatures from 50–230°C, and a fully customizable wafer handling solutions, it combines best-in-class conformality with semiconductor-grade throughput and cleanliness.



## HUICHENG

D122, D123

## Magnetron Sputtering Optical Coating Equipment

This equipment adopts metal mode sputtering technology combined with RF-ICP/CCP ion sources. It is equipped with robotic systems for automated substrate transfer between the loading and unloading chambers, ensuring uniformity of <1% in mass production for high-quality results. It can produce various coatings, including cutoff filters, bandpass filters, RGB filters, AR films, hard AR films, HR films, AS/AF films, AR+DLC+AS/AF films, ITO films, infrared AR films, and cold light films. These coatings are widely used in optical lenses, displays, automotive central control screens, LiDAR, and HUD (head-up displays).



# Optical Coating Equipment & Parts

## SHENZHEN YUANSU

OPTOELECTRONICS TECHNOLOGY CO., LTD. D006

### Thermal-ALD

- Gas delivery is optimized for use with wide range of precursors, while avoiding issues such as gas line clogs or cross contamination.
- Integration with high-level industry standard: based on PLC and IPC with touch screen.
- Reliable and comprehensive safety interlocks.
- User-friendly software interface with "one button" operation for process implementation.
- Provide customized thin film deposition processes.



## KURT LESKER (SHANGHAI) TRADING COMPANY INC

C126

### PRO Line PVD 75

The Kurt J. Lesker Company® PRO Line PVD 75 is the next generation thin film deposition system based on the workhorse PVD 75 platform. The PRO Line PVD 75 builds on the successes of the original design with improved system base pressures and pump down times. A technically superior chamber design, an industry best software control system with advanced programming capability, automatic substrate loading, and numerous features for optimized thin film performance are a few of the key advantages offered in this innovative, best of class design.



## XI'AN SNP PRECISION OPTICS CO., LTD

C302

### Vacuum System For Super Stable Cavity

Product name: Vacuum system for super stable cavity Material: stainless steel (304/316L)/titanium (TC4)/aluminum alloy Type: square cavity, spherical cavity, cylindrical cavity, elliptical cavity and other non-standard shapes Surface treatment: electrolytic polishing of internal and external surfaces Vacuum leakage rate:  $<1 \times 10^{-11} \text{pa} \cdot \text{m}^3 \cdot \text{s}^{-1}$  Working vacuum:  $<1 \times 10^{-5} \text{Pa}$  Temperature control accuracy:  $<1 \text{mK}$  Temperature control stability: the external temperature change is not more than  $2^\circ\text{C}$ ,  $1 \text{mK}/\text{day}$  Service voltage: 24V Power: 10W-100W (depending on vacuum chamber size) Other: vacuum cleaning, high temperature vacuum degassing, aerospace grade sealing welding Pump shutdown 7-10 days, ion pump can directly start to maintain vacuum



## HL CRYOGENICS

C106

### Vacuum Insulated Pipe

Vacuum Insulated Pipe (VI Piping), namely Vacuum Jacketed Pipe (VJ Piping) are used for transferring of liquid oxygen, liquid nitrogen, liquid argon, liquid hydrogen, liquid helium, LEG and LNG, as a perfect substitute for conventional piping insulation.





## ACEXON TECHNOLOGIES PTE LTD

B311

### Pharos - Solid State Femtosecond Laser System

PHAROS femtosecond lasers combine multi-millijoule pulse energy and high average power, featuring a robust optomechanical design optimized for both scientific and industrial applications. The thermally stabilized and sealed design ensures seamless integration into various optical setups and machining workstations, delivering exceptional laser lifetime and stable operation across varying environments. PHAROS provides unparalleled versatility, covering applications that would typically require multiple laser systems. Its key tunable parameters include pulse duration (100 fs – 20 ps), repetition rate (single-shot – 1 MHz), pulse energy (up to 5 mJ), and average power (up to 20 W). The built-in pulse picker enables a pulse-on-demand



## CRYLAS GMBH

A124

### FQCW266-1200 - cw Laser at 266 nm with 1.2 W Output Power

cw laser at 266 nm with 1.2 W output power, single frequency, very narrow linewidth, long coherence length, long service intervals, air cooled, no CDA purge required

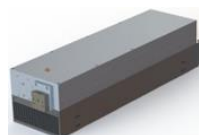


## CRYLAS GMBH

A124

### AQ266 - Pulsed 266 nm Nanosecond Laser with 100 µJ Energy and 10 kHz rep. rate

Pulsed nanosecond laser at 266 nm emission wavelength, offers 100 µJ pulse energy at 10 kHz rep. rate, resulting in 1 W average output power



## JD UNION PTE. LTD.

B321

### Lasers

JD Union proudly distributes a diverse range of laser brands, including IPG Photonics fiber lasers and systems, Iradion DPSS lasers (formerly Innolas Photonics), Iradion CO2 lasers, Luxinar CO2 lasers (formerly Rofin-Sinar UK), Trotec lasers, Innolas Laser for scientific, Femtum mid-IR lasers, and more. We offer lasers from CW to femtosecond, covering a wide spectrum of wavelengths to meet various industrial and research needs. Let us empower your applications with cutting-edge laser technology.



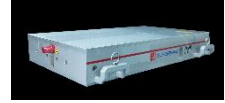
# Laser

## STRONG LASER

C330

## 500W IR Picosecond Laser

1. Applicable materials: Positive and negative electrode material of power battery (LiFePO<sub>4</sub>(LFP), LiMnFe<sub>1-x</sub>PO<sub>4</sub>, Na+) 2. Application scenarios: Cathode and anode electrode cutting of stacked battery; Semiconductor wafer scribing 3. Product Advantages: 1) High average power (> 500 W) and high repetition frequency (5 MHz) output, processing efficiency is remarkable; 2) High stability of pulse energy, good consistency of processing results; 3) Optical-mechanical-electrical integrated design with compact structure.



## CRYSTRONG PHOTONICS

D304

## 2.1-2.5μm Femtosecond OPO Laser

Features: Generation of 200 fs ultrashort pulses by 1 ps pumping Broad wavelength tuning range from 2100nm to 2500nm Power stability RMS <1% High peak power >10kW Application: Nonlinear Optics Research Nonlinear Optical Microscopic Imaging Mid-infrared Spectroscopy and Environmental Monitoring Precision Polymer Processing



## DEVISER INSTRUMENTS INC.

A522

## TLS1056 Hi-Performance Tunable Laser Source

TLS1056 is a high-end tunable laser that incorporates Deviser's extensive expertise in optical, mechanical, electrical, and other fields. The well-designed laser cavity, combined with ultra-low noise electronics, enables market-leading performance in terms of a wide wavelength range, high optical power, low noise level, narrow line-width, and hop-free scanning. The TLS1056 is equipped with an external cavity structure, which ensures a strong and reliable driving mechanism for long-term instrument performance. This design guarantees stable wavelength output without mode hopping, while also enabling fast wavelength scanning and maintaining high precision of wavelength and output stability.

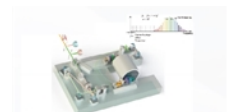


## GUANGZHIMU

C306

## GHz Yb Ultrafast Mode-Locked Laser and Frequency Comb

Miniaturization and lightweighting of large-scale optical systems. All-solid-state optical path with extremely low mechanical noise. Materials with low thermal expansion coefficients, such as quartz ceramics, ensuring extremely high environmental stability.



# Laser Component

## SCANLAB GMBH

A121

### IntelliSCAN IV Series

The IntelliSCAN IV series represents SCANLAB's latest generation of compact high-performance scan heads – developed to meet the highest demands in industrial laser processing. Thanks to advanced control technology, the IntelliSCAN offers outstanding dynamics, precision, and a significant boost in productivity. A range of apertures and configurations ensures maximum flexibility across a wide range of applications: Additive Manufacturing Photovoltaics Tool and Mold Making Battery Cell Production



## RAYLASE GMBH

A123

### SUPERSCAN IV

The SUPERSCAN IV's model-based, digital regulation offers extremely dynamic responses and final speeds, which really come into play when used in MOTF-applications (Marking-and-processing-On-The-Fly) in conjunction with one of our linear translator modules. The robust, water-cooled master block design, combined with optional air flushing, enables applications at up to 6 kW laser power. Lenses, protective glass, and mirror substrates and coatings are available for all standard laser types, wavelengths, light densities, focal lengths and processing areas. The control electronics were designed to be flexible to enable the configuration of additional sets of control parameters (tuning options).



## INXUN TECHNOLOGY CO., LTD

C611

### Wavelength-swept Laser Series

Central Wavelength ~1550/1310/1064nm Sweep Range 2.5THz Sweep Linearity ~99.999999% Applications FMCW Lidar, OFDR Optical Link Detection, OFDR High-resolution Fiber Optic Sensing, Medical Photonics

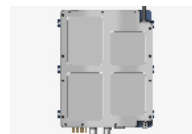


## FUZHOU XK PHOTONICS CO., LTD

D211

### Small NA Blue Laser Module, Multi-wavelengths Fiber Output Module

FUZHOU XK PHOTONICS can provide high power, small NA blue laser module for industrial application.



# Laser Component

## GYOPTICS TECHNOLOGY CO., LTD

D501

### 1500W In-Line Isolator

· High transmittance · Reverse full angle isolation · Suppression of thermal lens effect · Good beam quality · Beam Diameter/fiber type optional

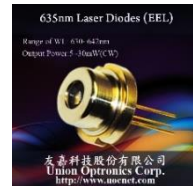


## UNION OPTRONICS CORP.

### D316 635nm Semiconductor Laser Diodes

\*\*Professional 635nm 5mW Red Laser Diode - TO-56 Package with Monitor Photodiode\*\* High-performance 635nm red laser diode delivering reliable 5-30mW output power in compact TO-56 (Ø5.6mm) package. Features built-in photodiode for precise power monitoring and lead-free flat window cap for enhanced durability.

1. High temperature operation,
2. High monitor current,
3. Standard optical power output: 5-30mW (CW),
4. Package type: TO-56 Package, cap window with flat Pb-free lens.



## CENTRAL RISE LIMITED

C534

### N3D Laser Marking Kit

N3D laser marking kit, including 3D laser head, control board and N3D laser control system. N3D offers the following key benefits: 1.Can mark on multi-level height workpieces without changing the position of laser head in flying marking 2. 0 delay Autofocus, can detect work height and adjust focus automatically, don't need to find focus manually. 3. Real-time detect on irregular workpieces, maintains optimal focal alignment, ensuring every character is in right place. 4. Support CVP marking, including code reading, encryption, and defect detection. 5.Precise laser spot control for faster marking of QR codes and filled patterns in flight marking.



## CENTRAL RISE LIMITED

C534

### 3D Scan Head

3D galvanometers are categorized into two types: pre-focus and post-focus. They support fiber, ultraviolet (UV), green, and CO2 laser sources, and are widely used in 3D model marking, curved surface processing, deep engraving, cutting, drilling, flying marking, cleaning, and other applications. We offer two product series: the S Series and the PLUS Series. The PLUS Series features faster marking speed, higher processing efficiency, and superior processing quality!



# Laser Equipment

**SHENZHEN HRLASER CO., LTD.**

D311

**HRLASER - A3MD30i - Handheld  
Laser Welding Machine**

**1. Deeper Penetration**

Supports D Mode, delivering up to 30% deeper penetration and 22% higher maximum welding speed.

**2. Larger Wire Roller Capacity**

Compatible with 5 kg / 15 kg / 20 kg wire rolls, adapting to a wide range of application scenarios.

**3. Extended Cable Length**

Equipped with a standard 6m cable, offering the optimal balance between reach and performance.

**4. Enhanced Control & Ergonomics**

The welding gun weighs only 490g, improving handling, balance, and operator comfort.



**GWEIKE TECH CO., LTD**

D302

**6 in 1 CNC Laser Cutting Machine  
and Fiber Laser Welding Machine**

6-in-1 machine, one machine, 6 processing methods is the world's first machine to integrate six functions: Welding / Cutting / Rust Removal & Cleaning / CNC Metal Cutting / CO<sub>2</sub> Cutting / CO<sub>2</sub> Engraving. A one-stop solution for small factories with limited budget to deal with small orders/order fragmentation. 1 Multi Laser Pro = sheet metal workshop + welding station + cleaning line + engraving workshop, order-taking capacity increasing threefold!



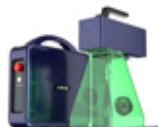
**GWEIKE TECH CO., LTD**

D302

**G2 20W Metal & Plastic  
Fiber Laser Engraver**

GWeiKeG2 20W Metal Laser Engraver /Bring Industrial to Home Use

1. Speed up to 15000mm/s 2. 100k Hours Lifespan 3. Exceptional Accuracy 4. Desktop & Handheld 2 in 1 5. Auto Lift & Manual Lift 6. Working Area 110\*110mm & 150\*150mm



**JD UNION PTE. LTD.**

B321

**Direct Machining Control:  
DMC Software**

Perfect for additive manufacturing, OEM integration, and R&D, DMC is a flexible, hardware-independent software for laser machines. It manages the entire process, from path generation to machine control, saving time and simplifying complex tasks. Supporting applications from 2D to 5D, both subtractive and additive, DMC handles intricate setups with ease. It offers fully customized software packages tailored to your hardware and application, enabling seamless integration. A custom-branded HMI can also be designed to match your existing software, providing a complete solution for laser machine integrators and advanced manufacturing needs. DMC makes precision and efficiency accessible for diverse laser processes.

**DMC** Direct  
Machining  
Control

# Infrared Component

## BLUE RESOURCE OPTICS (CHENGDU) CO., LTD.

C101, C102

### Infrared Optical Components

This high-performance infrared optical component, made of premium ZnSe, offers excellent transmittance in 3-12 $\mu$ m mid-infrared band, high laser damage threshold and thermal stability. Its 210mm large aperture, ultra-high surface finish and 0.22 $\lambda$  PV accuracy minimize distortion, supporting high-end applications like infrared imaging and lidar. It delivers reliable solutions with distinct market differentiation.



## SD OPTICS SINGAPORE PTE LTD

B324

### Infrared Optics

This optical part is manufactured to transmit within the visible and infra-red spectrum range of up to 5700 nanometers. It is generally used for filters, detection windows, thermal imaging and IR Domes.



## BOTE OPTICS

B313

### Infrared Components

This year, our top-selling products are infrared lenses and windows made from Zinc Sulfide, Calcium Fluoride, Zinc Selenide, Chalcogenide glass, IRG206, and Silicon. We support both aspheric and spherical optics, custom sizes, and production quantities. We also offer optical coatings including DLC for harsh environments and BBAR coatings optimized from SWIR to LWIR. In addition, we manufacture Germanium aspheres, spheres, and windows with coating options as well. All parts are processed in-house with full IR metrology, and we accept custom drawings for OEM programs, prototyping, and volume production.

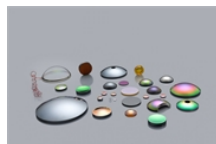


## KUNMING VISION INFRARED CO., LTD.

C512

### Components made by Chalcogenide Glasses

These premium-grade infrared materials are tailored for IR lens applications, and serve as an excellent choice for mandatory impact and vibration testing.



# Infrared Lens

## BOTE OPTICS

B313

## Custom Infrared Lens

We also provide full custom infrared lens design and build services. We support NIR/SWIR, MWIR, and LWIR systems, including fixed focus, motorized or manual zoom, and athermalized optical designs to maintain focus over wide temperature ranges. We design for MTF, stray light, boresight, weight, and volume targets based on your application specs. Our team can take your FOV / NFOV / detector format and deliver a complete optical/mechanical design, prototypes, and then mass production. We can integrate IR materials such as Ge, ZnSe, ZnS, Si, CaF2, Chalcogenides or mixed-glass designs to optimize performance.



## WAVELENGTH OPTO-ELECTRONIC (S) PTE. LTD

B514

## Shortwave Infrared SWIR Lenses

Shortwave Infrared (SWIR) wavelength band offers unique imaging advantages over visible and other thermal bands. It is quietly earning a growing place in industrial machine vision for electronic board inspection, material/food sorting, solar cell inspection, quality inspection, and in security applications. SWIR lenses are utilized where other detectors or cameras are not sensitive enough for finite detail recognition. Customization is available for this product. Let us know your specifications in the RFQ form.



## HANGZHOU TIANFU OPTOELECTRONIC TECHNOLOGY CO., LTD

C604

## Medium-wave Cooled Catadioptric Zoom Lens

The research and development and production of medium-wave infrared (MWIR) and long-wave infrared (LWIR) optical systems. It has a strong design team with rich experience in infrared optical design. It can use advanced design concepts to design a variety of medium-wave cooled catadioptric zoom infrared optical products for customers to meet their needs.



## VITAL OPTICS TECHNOLOGY CO.,LTD

C311

## Cooled Infrared Modules

Low cost, high resolution, fine image detail, independent and controllable industrial chain, and guaranteed supply.



# Infrared Lens/Camera

## AIRBOARD TECHNOLOGY (S) PTE LTD

B631

## Imaging and Optical Solution

Excelitas-PCO offers the broadest portfolio of scientific, industrial and specialized imaging camera systems on the market. Equipped with CCD, iCCD, CMOS, sCMOS or InGaAs sensors. We also design and manufacture a range of medium and long range thermal cameras covering the MWIR and LWIR wavebands for demanding surveillance, targeting, naval and C-UAS applications. Delta Optical Thin Film offer Homogeneous Bandpass, Edge and Blocking Filters, Dichroic Beam splitters and Linear Variable Filters. With unique and advanced design software and proprietary deposition control software, we ensure a fast and efficient design process and a rapid prototype manufacturing process.



## SHENZHEN CORENT INFORMATION TECHNOLOGY CO., LTD.

C312

## FPV Thermal Imaging

High Resolution and Detail Capture: Infrared imaging technology can provide high resolution, capable of capturing minute temperature changes in objects.

Real-time and Dynamic Monitoring: Infrared imaging technology can provide real-time temperature distribution images, making it easier to observe and analyze changes in the thermal state of objects.

Intuitiveness and Ease of Understanding: Infrared images are usually displayed in false color, with different colors representing different temperature ranges.

Safety and Reliability: Infrared imaging technology has significant advantages when monitoring objects in hazardous environments, such as high temperatures, high pressure, or toxic conditions.



## VITAL OPTICS TECHNOLOGY CO., LTD

C311

## Thermal Cameras

Low cost, high resolution, fine image detail, independent and controllable industrial chain, and guaranteed supply.



## SHENZHEN SHIYUTONG TECHNOLOGY CO., LTD

C315

## Thermal Imaging Telescope

This thermal imaging device delivers high-resolution imaging with advanced image processing for clear target detection in complete darkness and harsh environments. It features fast startup, stable performance, long detection range, and reliable operation across wide temperature conditions. Designed with a rugged housing and optimized power management, it supports extended field use and real-time visual observation for professional outdoor and industrial applications.





# Infrared Device

## HANGZHOU BAITENG ELECTRONIC TECHNOLOGY CO., LTD

### C502 UAV Hyperspectral Camera System

✓ DJI M350 or M400 are used as the flight platform, wavelength can cover from 400- 2500nm; ✓ High SNR ultra high speed spectral scanning imaging device is used to provide highly stable spectral image acquisition; ✓ The self-developed image processing algorithm with high efficiency and low power consumption is adopted to greatly extend the flight time of the whole machine and reduce the system power consumption; ✓ Through real-time measurement of spectral image information of plants, water bodies, soil and other surface objects, application and precision agriculture, crop growth and yield assessment, forest pest monitoring and fire prevention monitoring, coastline and marine environment



## HANGZHOU BAITENG ELECTRONIC TECHNOLOGY CO., LTD

### C502 Portable Hyperspectral Camera

The FigSpec@FSIQ Series portable hyperspectral camera is an internal sweep hyperspectral camera with a wavelength range Circumference 400-1700nm, spectral resolution (FWHM) can reach 2.5nm, the spatial resolution is up to 1920\*1920, and the number of spectral channels is up to 1200; Display and operation through 5-inch touch screen, resolution 1280\*720.



## CHINA STATE SHIPBUILDING HONGYANG (WUHAN) TECHNOLOGY CO., LTD

### C501 Infrared Thermal Imaging Gas Leak Detector

Infrared Thermal Imaging Gas Leak detector is a non-contact leak detection equipment for volatile organic gases (VOCs), using MWIR cooled thermal detector. The product is Ex ic nc op is II cT4 Gc explosion-proof certification, high protection level (IP54), quickly detect volatile organic gas (VOCs) leaks in the form of images, and can accurately locate the source of the leak or emission, so that inspectors can detect VOCs leaks from a safe distance.



## CHINA STATE SHIPBUILDING HONGYANG (WUHAN) TECHNOLOGY CO., LTD

### C501 VOC Detection Payload

The GX-M320B is used on an airborne platform and can monitor and track suspicious targets (mainly for voe leakage detection) day and night with an infrared thermal camera and a high-definition visible camera. The image processing unit includes target tracking processing and image codec and storage, which can realize the function of taking photos, video recording and storage of the surveillance target, and can report the position and video information of the target to the back-end in real time through the network and serial port.



# LiDAR and Sensing

## JNHUA LANHAI PHOTOELECTRICITY TECHNOLOGY CO., LTD

C511

### Laser Sensor

The M300 non-repetitive scanning LiDAR offers a range of up to 50 meters, with a 360° horizontal FOV and a -10° to 60° vertical FOV. It delivers outstanding coverage and accuracy, producing dense point clouds, making it ideal for various indoor and outdoor applications such as smart mowers, industrial AMRs, and 3D modeling. Its innovative scanning pattern ensures rich environmental detail and stable performance.



## JNHUA LANHAI PHOTOELECTRICITY TECHNOLOGY CO., LTD

C511

### Laser Sensor

The S300 solid-state LiDAR features a 48 m range and 120°×50° FOV, enabling full-scene indoor and outdoor applications. With dense, precise 3D sensing and no mechanical parts, it ensures long-term stability and reliable point cloud data. Widely used in robotics, automation, and security, it excels in area intrusion detection, forklift and personnel identification, and real-time alarm functions under all lighting and weather conditions.



## SUZHOU ZHIXING SEMICONDUCTOR TECHNOLOGY CO., LTD.

B115, B116

### VCSEL Modules for 3D Sensing

We provide and customize various VCSEL modules for many different market applications, including iTOF modules, DTOF modules, line laser modules, TWS modules, LDS modules and structured light modules. We offer the most versatile line laser modules in the market and has shipped more than 10kk for 10+ customers. Wavelength options include 808nm and 850nm. Power levels vary from 70mW to 500mW, CW. They are widely used for obstacle avoidance for robots, especially in vacuum robots. We offer different kinds of LDS modules for robots. Combined with line laser modules, we provide a complete set of intelligent sensors for robots.



## SANSHENG ENCODER

C333

### SZM Ultra Thin Integrated Magnetic Absolute Encoder

Ultra thin Magnetic Principle, high absolute accuracy:  $\pm 0.01^\circ$  Integrated structure, easy installation, no secondary calibration Dust-proof design Redundant design, automatic error correction Zero position marking Alternative to imported brands (HEIDENHAN, Renishaw, Netzer, etc.), domestic customized.



# Optical Test and Measurement

## NEXUSTEST PTE LTD

B521

### 1.6T Benchtop Bit Error Ratio Tester PBT3058

1. Wide data rate range Range: 24.33 ~120 GBaud. 2. Flexible configuration Flexible test unit replacement. Channels can be independently configured for NRZ or PAM4 signaling measurements. 3. Excellent signal quality Fast rising and falling edges, low intrinsic jitter. Support high swing output, pre-emphasis, and independent adjustment of eye height. 4. Rich test code types Pattern: PRBS7~31, PRBS70~31Q, SSPRQ, JPO3A, JPO3B, LINEAR, Square Wave, Custom Defined Pattern. Trigger signal supports frequency division output (4 division to 32 division).



## KOREA ADVANCED MATERIALS CO., LTD

B102

### Power Meter

KAM's optical test equipment lineup provides high-precision measurement solutions for modern fiber-optic networks. Designed for CWDM, DWDM, LWDM, PON-Power meters, MPO, and standard optical transmission systems, these devices offer accurate power measurement, fast scanning within less than 1sec, and user-friendly interfaces suitable for field technicians, telecom operators, and data-center engineers.



## DIMENSION TECHNOLOGY CO., LTD.

A211, A212

### 1.6T/800G High-Speed Signal Test Solution

The DIMENSION High-Speed Signal Test System comprises an 800G Bit Error Rate Tester (BERT) and 112G CDR600 (single-mode/multi-mode) clock recovery units. Integrated with DIMENSION's multi-channel optical attenuators, optical switches, optical power meters, and data analysis software, this system enables rapid and accurate characterization of high-speed optical transceivers, including parameters such as BER, eye diagram, and optical power. The system automatically generates test reports and data logs, facilitating easy traceability and in-depth analysis. Designed for seamless integration and flexible scalability, it can be tailored to meet specific customer process requirements, significantly enhancing test efficiency while controlling overall costs.



## DEVISER INSTRUMENTS INC.

A522

### AE905 Multifunction Modular Platform

Brought to you by Deviser Instruments, the AE905/908 is a multifunctional modular platform designed to meet a wide range of photoelectric measurement needs. This platform supports a comprehensive lineup of modules, including stable laser source, optical power meters, insertion loss & return loss optical power meter, remote-head high-performance optical power meter, optical attenuator, optical switch and insertion loss & return loss tester. The AE905/908 offers high accuracy, excellent stability, rapid response times, and user-friendly operation. It is the ideal test platform for designing and manufacturing optical modules and devices.



# Optical Test and Measurement

## SHANGHAI JOIN-MU INTELLIGENT TECHNOLOGY CO., LTD

A502

### MAP900-MBR MT-FA Automatic Test System (IL&RL&Polarity Detection)

MAP900-MBR is a special MT-FA device insertion loss, back loss, polarity as one of the automatic test system, is a set of optical back reflection detection technology, image recognition technology, motion control technology integration of optical precision testing instrument. It can realize the automatic detection of 400G/800G/1.6T optical module components and optical engine components.



## MICRO MOTION TECHNOLOGY CO., LTD

D124

### Digimatic Manual Stage with Absolute Encoder

1. Manual Goniometer Stage with Absolute Encoder: Equipped with a high-resolution absolute encoder and dedicated reader for direct angular readout : no external vision or metrology system required. 2. Portable, Battery-Powered Operation: Stand-alone functionality enabled by internal battery, ideal for field use or flexible integration 3. Proprietary Mechanical Design for Enhanced Stability: Minimized positional shift during locking through the application of a precision disk-clamp mechanism. Integrated high-resolution, low-backlash adjustment gonio unit ensures precise and repeatable angular positioning.



## TIANJIN ELOIK COMMUNICATION EQUIPMENT TECHNOLOGY CO., LTD.

A611

### Access Network Analyzer

1.Support 10G cable or fiber and 2400M wireless internet speed testing 2.Powerful WiFi Airtime test function, no need password and internet connection, without using any WiFi traffic, showing test results in real time. 3.Power by Android system, support 3rd party APPs 4.Support HDMI, 3.5mm earphone jack, Type-C, TF Card and other ports. 5. Pocket size, easy to carry



## SHENZHEN FTTX TECHNOLOGY CO.,LTD

A114

### Optical Time Domain Reflectometer

The TC-330 is a portable, multi-functional OTDR integrating fiber testing, power metering, VFL, light source, and RJ45 testing. Its 3.5-inch touchscreen, 90km range, 20-hour battery, and compact design offer high efficiency and convenience for FTTX and network maintenance.



# Optical Test and Measurement

## SOLIWARE STORAGE TECHNOLOGY CO.,LTD A204

### SWB-2000HX

· Aging screening in the batch production process of high-power optical modules/COBs; · Long-term reliability testing and failure analysis; Support various COBs and optical modules with different packages under 6A; Support DDMI data monitoring of various protocols; Support automatic identification and tracking of the SN of aging boards and statistics of the number of plug-ins and removals; Temperature control range: 40°C to 85°C; Water cooling and heat dissipation: PID + SSR power regulation + intelligent water flow regulation; Temperature uniformity:  $\leq \pm 3^{\circ}\text{C}$ ; Power supply: 3AC380V 50/60Hz 15kW;



## SINGPHOTONICS INTERNATIONAL PTE. LTD. A222

### Ultra-High-Speed Bit Pattern Generator (BPG)

Key Features · 256 Gbps (128 GBaud PAM4/OOK) signal generation · Built-in PRBSQ patterns and 8 GSamples user pattern per channel · Supports JP03A/B, QPRBS13, PRBS13Q/31Q, SSPRQ, SSPPR & custom pattern combination Applications · PAM4 up to 128 GBaud (256 Gbps) · NRZ up to 128 Gbps · Multi-Channel 64 Gbps NRZ



## SINGPHOTONICS INTERNATIONAL PTE. LTD. A222

### Full-Band High-Precision Optical Passive Component Scanning System

Key Features · Full OESCLU band coverage · High-accuracy measurement · IL/RL/PDL multi-parameter testing · Picometer-level wavelength resolution Applications · Optical communication device testing · Optical spectrum and filter testing · Integrated photonic component testing



## HAITUO INSTRUMENT (JIANGSU) CO., LTD A313

### 3T BERT System

The system has excellent tri-temperature testing capabilities, allowing it to precisely simulate high, normal, and low temperature environments that optical modules may encounter in real-world applications. With high-precision temperature control, the system ensures that performance test results of the optical modules are highly accurate and reproducible under different temperature conditions.



# Optical Test and Measurement

## GUANGZHOU PUQING ELECTRONIC TECHNOLOGY CO., LTD

A002 100G, 200Gbps Clock Recovery Unit

P2300 series clock recovery unit is developed by Guangzhou PUQING, it support data rates in the range of 24~30 GBaud and 48~60 GBaud, up to 120GBaud(Preparing) which are running in 400Gbps and 800Gbps optical transceiver. P2300 series help to do the eye diagram test by using sampling oscilloscope or digital communication analyzer in high-speed optical module R&D and production, it supporting both single-mode fiber and multi-mode fiber optical transponder testing. P2300A has world best class performance.



## GUANGZHOU PUQING ELECTRONIC TECHNOLOGY CO., LTD

A002 The 4th Generation Pro-Itest@ High Frequency RF Switch Matrix System

The 4th generation Pro-Itest@ high frequency RF switch matrix system is developed by GZ Puqing, have been widely used in High-speed cable performance test like DAC,AOC,ACC,AEC. The hardware system is controlled by customized software that can run testing, saving and reporting automatically. It has the features of run faster, functionality customized and expendable, and compatible with different VNA vendors like Keysight, Anritsu, R&S, Ceyear(41st Institute) and iTenest etc.



## BEIJINGAUMIWALKER TECHNOLOGY CO., LTD.

A808-10

DC-Block

· 50-ohm load · Up to 110GHz Total 6 · Three different configuration interfaces · Excellent Group Delay Ripple for All-band · Excellent VSWR, insertion loss, through power · High RF performance, ultra-competitive price · Connector types include 1.0/1.85-male/female



## BEIJINGAUMIWALKER TECHNOLOGY CO., LTD.

A808-10

Power Divider

· Broadband Design, DC~110GHz · Miniature size and light weight · Good Isolation, 7.5dB@DC~110GHz Typ. · Excellent VSWR, 1.5:1@DC~110GHz Typ. · Low Insertion Loss, 7.5dB@DC~110GHz Typ. · Low amplitude ( $\pm 0.8$ dB max.) and phase imbalance ( $\pm 10^\circ$  max.)



# Test and Measurement

## Semiconductor

### NEXUSTEST PTE LTD

B521

### 120 GBaud Clock Recovery Unit CR3302

1. Wide range Supports NRZ / PAM4 signal clock extraction at 25~120 GBaud. Excellent performance. 2. Fast locking speed Under auto/semi-auto mode. 3. Wavelength range 1250~1600 nm 4. Multiple frequency output Supports 1/2 (25/50 GBaud), 1/4, 1/8. 5. Recovered clock random jitter  $\leq 200$  fs (typical). 6. Flexible configuration Supports both optical and electrical signal clock recovery (optional). 7. High sensitivity -14 dBm@106.25 GBaud PAM4/1310 nm. Very conducive to silicon photonic application with ultra-low input optical power. 8. Easy to use With either touch lcd screen or flexible remote-control solution, the CR3302 can work with sampling oscilloscopes easily and quickly.

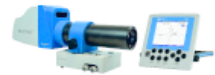


### MÖLLER-WEDEL OPTICAL GMBH

A133

### ELCOMAT® 5000

ELCOMAT® 5000 is Möller-Wedel Optical's unique electronic autocollimator that combines highest precision angle measurements with a robust design fit for nearly every environment. ELCOMAT® 5000 finds its main areas of application in machining, semiconductor industries, optics and photonics manufacturing, calibration laboratories as well as in synchrotron and research facilities.



### SHENZHEN SHUHE TAI TECHNOLOGY CO., LTD

D029

### NAND Flash Intelligent Test System

**Product Description:** This series is a comprehensive NAND Flash test system offering customizable testing solutions. It operates within a temperature range of -60°C to 150°C, features 240 parallel test interfaces, and supports customized expansion. **Core Advantages:** • Tests NAND Flash chips at frequencies up to 3200 Mbps. • Performs flash endurance testing to predict remaining useful life. • Supports wide-temperature screening to simulate extreme operating conditions. • Enables high-quality flash die sorting. • Supports voltage margining tests. • Allows user-defined Pattern configuration. The system provides the global semiconductor industry with high-precision, high-reliability NAND Flash grading and screening services, along with comprehensive product solutions.



### IN-CUBE AUTOMATION

B111

### MS-WTW Wafer Inspection and Sorting Machine

The MS-WTW Wafer Inspection and Sorting Equipment is an automated system designed for membrane-to-membrane processing, combining inspection and sorting functions. It features high pick-and-place speed, high die bonding accuracy, high inspection precision, and high cleanliness levels. It is compatible with incoming 8-inch and 12-inch Disco rings and can handle chip products ranging from 0.5mm x 0.5mm to 15.5mm x 15.5mm in size. • High and Stable Alignment Accuracy: Achieves XY alignment precision deviation of  $\leq 25\mu\text{m}$  and angle deviation of  $\leq 1^\circ$ . • High Efficiency: Continuous picking cycle time (CT) of less than 200ms for 3mm x 3mm chips.



# Test and Measurement

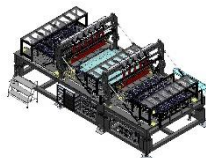
## Semiconductor

**CHENGDU CNS  
VISION TECHNOLOGY CO., LTD.**

C115

**Automatic Macro Inspection  
Equipment(Auto Macro)**

This equipment is mainly used for macro defect inspection of substrates. It enables efficient scanning and image capture across the entire substrate area through high-uniformity area lighting and a high-resolution imaging system, combined with the high-speed motion of the platform. Utilizing intelligent algorithms, the system extracts and classifies Mura defects, accurately identifying common types such as luminance non-uniformity, color spots, and streaks, while providing quantitative reports. It is applied for Mura inspection after the PI process. Extremely high inspection stability and repeatability. Covers panel sizes from small and medium to extra-large dimensions (G1 to G10.5)

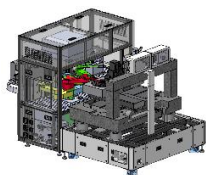


**CHENGDU CNS  
VISION TECHNOLOGY CO., LTD.**

C115

**Combined Measurement  
Equipment (SE)**

The CNS Comprehensive Thin-Film Metrology System is a versatile thin-film measurement instrument, widely utilized in the semiconductor and display industries. Within Measurement & Inspection (MI) processes, thin-film metrology equipment serves as a critical measurement tool used in the primary process, including: Semi: SOI, SiC, SiGe, ONO, OPD, Strained Si etc. FPD: TFT-LCDs, LTPS, LTPD, Color filters, OLED etc.



**SHENZHEN BRIGHTAS  
COMMUNICATION EQUIPMENT CO., LTD**

A112

**Silicon Photonics Die  
Automated Test Station**

Dual 6-Axis Silicon Photonics Test Station: Features large travel (X:30mm, YZ:20mm) and ultra-precise Panasonic eddy-current sensing ( $\pm 1\mu\text{m}$  gap control,  $0.005^\circ$  auto-tilt). Enables fast, stable bilateral coupling ( $<0.1\text{dB/min}$  drift) & vertical coupling via quick-change fixtures. Integrates comprehensive optical/electrical/thermal testing (IL, RL, EO BW, I/V, FD, TEC  $15\text{--}85^\circ\text{C}$ ) with DC/RF probe card. Key advantages: Unmatched precision, exceptional stability (Japanese motors), broad application flexibility (adaptable fixtures, DC/RF, MES, custom instruments/software), and all-in-one test capability - streamlining SiPh die production and R&D.



**IN-CUBE AUTOMATION**

B111

**Fully Automatic 4-Side Optical  
Inspection Equipment for Chips**

Appearance inspection of single-chip devices such as DFB laser chip and high-power diode laser chips. • Easy to Operate: Fast modeling, with automatic template generation for similar products. • Defect Detection Powered by Deep Learning + Traditional Algorithms: Parameters can be freely set for precise control. • Offline Prejudgment Support: Allows customization and modification of reports. • Non-Damaging Chip Handling: Capable of extracting chips without damaging the protective film, reducing the risk of product damage. • Customizable Nozzles: Minimizes the risk of chip pressure marks. • Nanometer-Precision Optical Detection Platform: Ensures highly accurate inspection. • Customizable Lenses: Supports optional detection for minor cleavage patterns.





# Test and Measurement

## Alignment Equipment

### OPTOSIGMA SOUTHEAST ASIA PTE LTD

B301

### Optical Alignment Systems

The provided ALIGNMENT STAGE units boast 12 axes (6-axis) with symmetrical configurations, enabling flexible and cost-effective customization for silicon photonics, Semiconductor and Quantum Device alignment applications. The use of standardized hardware and customizable software streamlines system creation. The magnet mounting method and positioning mechanism in the holders ensures high positional repeatability. We work with strategic partners to enhance our alignment solutions. KATSURA OPTO specializes in optical measurement technology, providing laser tilt sensors, autocollimators. MECHNO TRANSFORMER develops piezo actuator that allowed nanometer resolution alignment.



### MRSI AUTOMATION (SHENZHEN) CO., LTD

B214

### MRSI-A-L Active Aligner

MRSI A-L is a modular-design machine, with integrated pick and place, dispense, vision, alignment functions, as well as intelligent software that offers users flexible processes. It is a powerful tool for optical components assembly, such as transceivers, silicon photonics, AWGs, LiDAR, integrated optics etc. Active aligner applications tend to be highly customized and MRSI is equipped to meet design requirements for customized applications. Configuration highlights:  
·360° rotatable laser angle collimator for high precision surface angular control  
·Laser beam profile measurement and processing  
·Powerful machine vision  
·1µm accuracy laser height detection  
·Auto dispense & UV cure



### SHENZHEN AIT PRECISION TECHNOLOGY CO., LTD.

A113

### Dual-station Fully Automatic Active Alignment Equipment

The Active Alignment equipment independently developed by AIT is used for the AA process of optoelectronic modules. In terms of process, it can replace the two main process flows, LHA and Auto Focus. The equipment achieves micrometer-level alignment of the Sensor and Lens across six degrees of freedom, ensuring that the Sensor center and Lens optical center are aligned, thereby enhancing the resolution and uniformity of the image both at the center and edges. It perfectly implements optical active alignment to achieve the optimal imaging performance of the product.



### LASER X TECHNOLOGY (SHENZHEN) CO., LTD.

A808-17

### SiP Alignment & Test System

Performance Parameter 1. Applicable types of product: SiP, TFLNOL, Blue film, single DIE, Bar chip 2. Load and unload method: Fully automatic Load and unload 3. Temperature range: 25°C~80°C 4. Heating time(25°C~80°C): 1.5min 5. Cooling time(80°C~25°C): 1.5min 6. Alignment technical index: Optical coupling<30s(U Loop); Alignment Repeat accuracy< 0.2dB; Optical power stability<0.2dB@3min 7. Alignment system: Single/dual FA, end coupling, vertical coupling 8. Equipment characteristics: -High-precision needle insertion system, automatic needle insertion -Linear motor alignment system, automatic alignment system -Automatic dispensing -Automatic cleaning -Automatic sorting Bin -OCR recognition -MES system



# Test and Measurement

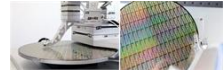
## Alignment Equipment

### SMARACT GMBH

A125

### Fast Photonics Alignment

For fast and efficient alignment of optical components and silicon photonics, SmarAct provides modules and subsystems optimized for precision, compactness, speed, and force. The modules can be configured to handle virtually any alignment task, including: – positioning and alignment of lenses – fiber-to-waveguide coupling – single-fiber and fiber-array alignment – alignment of optical components within assemblies



### AI PO LI INDUSTRIAL CO., LTD.

D005

### CNC Scriber Version C.C.D. Auto Alignment

CNC SCRIBER VERSION C.C.D. AUTO ALIGNMENT adopts CNC controller, servo motor, and ball screw. The machine is suitable for cutting regular profiles and irregular profiles. The machine is equipped with air floatation device and vacuum system to facilitate glass delivery and secure glass when cutting so as to prevent the glass surface from being scratched. The machine is suitable for cutting extra thin glass and thickness minimum can reach 0.1mm. The device is popular with optoelectronics industries such as automobile and smart phone.



### SHENZHEN BRIGHTAS COMMUNICATION EQUIPMENT CO., LTD

A112

### 800G Dual-FA Automated Alignment Station

1. Key Features: bilateral 6-axis + gantry 3-axis automation for full-process coupling, dispensing; and UV curing. 2. Key advantages: Unmatched precision via triple-sensing (vision/distance/pressure) for  $\pm 0.5\text{dB}$  power stability and gap control, ultra-fast linear motor XYZ axes, high flexibility with quick-change fixtures/electric grippers, and exceptional reliability from Japanese step motors. Enables end-to-end automation (alignment, dispensing, curing) for diverse SiPh devices – boosting yield and throughput while reducing manual intervention. 3. Production Efficiency: End-to-End Automation,  $\pm 0.3\text{dB}$  power stability, UPH>10 pcs



# Test and Measurement

## Spectroscopy

### AIRBOARD TECHNOLOGY (S) PTE LTD

B631

### Test and Measurement

The Excelitas family of Single-Photon Counting Modules (SPCMs) are self-contained modules that meet the low-light-level detection demands of confocal microscopy, fluorescence, luminescence, and TCSPC, particle sizing and Quantum Communications. Our SPCMs offer market-leading Photon Detection Efficiency (PDE), low after-pulsing, highest uniformity over the active area, high linear dynamic range, and low dark counts. Ocean Optics pioneered miniature spectrometers and delivers spectral solutions to researchers, OEMs and industrial customers, also designs and builds industrial-grade photonics systems for material inspection, chemical identification and quality assurance.



### HAKUTO SINGAPORE PTE LTD

B513

### OtO Photonics

OtO Photonics Inc. is a leading innovator in micro-spectrometer technology, integrating advanced spectroscopy with multidisciplinary expertise to deliver complete optical solutions. Dedicated to technological innovation and applied creativity, OtO empowers customers to achieve breakthroughs across industries. With deep experience in opto-mechanical integration, OtO continues to develop cutting-edge, customizable solutions that drive performance, enable new applications, and create market value. Backed by strong technical foundations and collaborative partnerships, OtO Photonics aims to help clients maximize commercial potential and stay ahead in the evolving photonics landscape. Welcome to discuss and communicate with us, let us collaborate to create innovative technology or products



### AVENIR PHOTONICS GMBH & CO. KG

A122

### ARIS Spectrometer

The ARIS spectrometer is a laboratory-grade instrument that also meets the size, price and reliability requirements for portable and industrial applications. With its high-throughput optical design it delivers 2 to 4 times better sensitivity than other spectrometers in this price range without sacrificing stray light performance. The ARIS is available in six standard wavelength ranges that can be customized to the requirements of a specific application. Its powerful microcontroller offers on-board auto exposure, averaging, buffering and sophisticated spectrum processing. With its proven reliability in rough conditions and compact size, the ARIS bridges the gap between laboratory and field spectrometers.

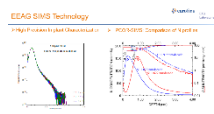


### AIWENSI

A633

### SIMS and Material Surface Analysis

SIMS (secondary ion mass spectrometry) could report element distribution in trace level, to monitor quality of Implant/ CVD/ LPCVD/ MOCVD/ ALD/ EPI/ Diffusion/ Anneal/ ECP/Oxide process; We could measure Si/ SiO<sub>2</sub>/ SOI/ LOT/ P5G/ BP5G/ F5G/ SiN/ SiON/ SiGe/ InP/ GaAs/ AlGaAs/ GaN/ AlGaN/ AlN/ SiC/ GaO/ Diamond/ Graphite/ Cu/ LiNbO<sub>3</sub>/ MCT material, and thin film from 2nm to 32um, and pattern sample to 25um\*25um(Si). Surface analysis mainly includes SIMS , XPS ( X-ray photoelectron spectroscopy ) , and AES( Auger electron spectroscopy ) characterization. we will get ToF-SIMS tools in Dec.2025; it will enhance our surface analysis capacity strongly.



# Test and Measurement

## Microscope

**MITUTOYO ASIA PACIFIC PTE LTD**

**A323**

**VMU (Video Microscope Units)**

The VMU series is a measurement microscope unit that offers a 30 mm image field on the image side, offering an observation area approximately seven times larger compared to conventional models. Its inspection capability is further enhanced by combining with Mitutoyo's range of long working distance lenses, which are made and designed in Japan. Mitutoyo lenses can support a wide range of wavelengths from ultraviolet to near infrared, featuring industry-leading long working distances and a maximum field of 30mm. By combining with Mitutoyo's long working distance lenses, VMU enables highly efficient inspection for defection detection and surface inspection.

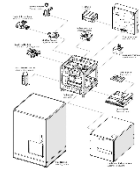


**MÄRZHÄUSER WETZLAR GMBH & CO. KG**

**C201**

**ScanExpress**

The ScanExpress is a custom-configurable scanning system built on a lightweight, torsionally stiff base unit. Core Components: It features a SCAN series scanning stage (130x80mm) and a focus axis, both optionally available with integrated measuring systems. The equipment includes transmitted and reflected light units, motorized turrets for objectives and reflectors, and a camera tube. Control & Automation: The system is controlled by the TANGO neo 4 controller and is programmable via the TANGO API. Full automation is possible through its integration with the open-source software  $\mu$  Manager. Customization & Specs: Options for liquid dispensing and auto-loading are available.



**DINGTENG**

**B001**

**Measuring Microscope**

Dingteng neutral microscope features Z-axis 0.1 $\mu$ m high-precision focusing, seamless multi-magnification switching and non-destructive testing. Suitable for electronics, automotive, medical fields, it combines intelligent imaging with efficient measurement, capturing micro-details accurately and outperforming similar products.



**OPTICAL GAGING (S) PTE LTD**

**B333**

**OGP SmartScope M Series**

SmartScope M-Series from OGP represents a line of advanced 3D multisensor dimensional measuring systems with features tailored for precision metrology. The M-Series includes models like the M20 and M45, each equipped with the IntelliCentric-M optical system, which boasts a 20-megapixel metrology camera and VIRTUAL ZOOM technology for superior image quality and resolution. These systems offer LED illumination, multisensor versatility with options for touch probes, scanning probes, and laser sensors, and a robust design for accuracy. They cater to diverse applications, from rapid edge detection to intricate 3D measurements, making them ideal for high-precision environments.



# Test and Measurement

## Imaging Measurement

**AMETEK SINGAPORE PTE LTD**

B213

**PGI Optic Pro**

A benchmark for accuracy and versatility in measuring high precision optics. Taylor Hobson is the only company that can prove radius accuracy and form capability over the full gauge range. This is to certify the integrity and reproducibility of the results the system produces. Better image quality send thru amefex.



**3D Instant Scanning  
Ultra High-Precision Video  
Measurement System ( $\mu\text{m}$  &  $\text{nm}$ )**

**DSC INDUSTRIAL PTE LTD**

B522

Our 3D INSTANT scanning high-precision ( $\mu\text{m}$ ) video measurement system can perform 2D/3D measurements simultaneously at high-speed on a single machine to meet your unique high-precision requirements in photonics, semicon, lead frame, electronics & PCBA etc. Our 3D Ultra high-precision ( $\text{nm}$ ) measurement systems can support resolution 0.1nm with repeatability 30nm. Fully automatic measurements on parts/wafers/glasses/multi-layer-coatings/PCBA for their 3D surface profile, roughness, warpage, BOW and TTV etc on our machines with your required stage sizes, e.g. 100mm x 100mm, 350mm x 350mm or 1000mm x 800mm etc. We can curate our 3D machines to meet your unique high-precision challenges.



**TRIOPTICS SINGAPORE PTE LTD**

B304 **Image Quality (ImageMaster® HR 2)**

The devices ImageMaster® HR 2 and Universal provide an outstanding level of accuracy and flexibility when testing the MTF (modulation transfer function). The equipment is modular and upgradeable to allow for custom configuration as test requirements change. The instrument can be configured for testing optical systems with the object at infinity or object and image at finite conjugates. The accuracy of the measurement is traceable to international standards. The ImageMaster® HR 2 offers versatile functionality for testing the image quality of small and medium-sized lenses, e.g. for smartphone, photo and film cameras.



**LumiTop X150 – Ultra-high-resolution  
Imaging Colorimeter for MicroLED &  
MicroOLED Subpixel Metrology**

**INSTRUMENT SYSTEMS GMBH**

A127

The LumiTop X150 system builds on a proven measurement principle that combines a high-speed imaging camera with a CAS reference spectroradiometer to deliver both speed and absolute accuracy in a single shot. With an effective resolution of 150 MP—expandable to up to 600 MP per color channel using the pixel shifter—it enables detailed analysis down to the subpixel level. Luminance, color and uniformity can be evaluated for precise demura correction in production environments. LiveCAL real-time calibration directly on the DUT ensures highest color accuracy, making LumiTop the ideal solution for demanding display testing tasks from development to mass production.



# Test and Measurement

## AOI

### HUNAN ULTRA PRECISION INTELLIGENT TECHNOLOGY CO., LTD.

A534

### Fully Automatic Multifunctional Detection Machine (AOI-DFN030)

AOI-DFN030 is a multi-faceted inspection equipment developed for the visual defect inspection of semiconductor chips. At its core, the equipment features high-precision motion platform and utilizes an AI deep learning algorithm engine. Leveraging the company's extensive experience in the field of defect detection, the equipment boasts superior imaging capabilities. Its unique AI algorithm efficiently identifies defects, supports a comprehensive range of defect learning environments, and provides a full-field production information interface. The equipment also integrates multiple process configurations, a high-capacity remote offline review system, and a customized MES system interface, among other advantages.



### HUNAN ULTRA PRECISION INTELLIGENT TECHNOLOGY CO., LTD.

A534

### Wafer Surface Defect Inspection Equipment (AOI-W500)

AOI-W500 is a precision system designed for wafer surface defect inspection, utilizing machine vision technology for detection. It identifies a comprehensive range of visual anomalies including residue, contamination, breakage, cracks, scratches, localized discoloration, pattern irregularities, and dimensional deviations (an optional micro-line detection module is required for faint pattern defects). The system offers freely configurable layer settings, with independently saved parameters for different product models.



### HEBEI THAHOO PHOTOELECTRIC TECHNOLOGY CO., LTD.

B106

### AOI Detection Machine

The AOI six-sided inspection equipment employs a sophisticated integration of deep learning and traditional vision techniques to facilitate model self-improvement and enhance accuracy in real time. This system achieves an impressive recognition accuracy of 0.5 micrometers (0.1 micrometers per pixel) and can detect a diverse array of defect types, including but not limited to cracks, stains, chipping, coating peeling, waveguide similarity, dissociation lines, variations in material quantity, scratches, uneven coating, crushing, waveguide process issues, gold loss, missing characters, and uneven back gold. For each chip and its respective sides, dedicated models are developed, which allows for the training of highly...



### CHENGDU TIMEMAKER CRYSTAL TECHNOLOGY CO., LTD

A203

### Automated Optical Inspection

For optical manufacturers struggling with the labour-intensive task of detecting microscopic surface defects such as micro-scratches, TMK's fully automated, AI-enabled optical inspection system is designed to deliver fast, accurate, and repeatable inspection. The system automatically detects surface defects on transparent materials and features automatic loading and unloading, intelligent wafer visual alignment, and simultaneous double-sided detection to increase production speed and consistency. The equipment supports wafer sizes from 2 to 12 inches and can be customised to inspect other singulated optical components, including prisms, Z-blocks, and similar precision parts.



# Test and Measurement

## Positioning System

### AIRBOARD TECHNOLOGY (S) PTE LTD

B631

#### Precision Motion Control

At Zaber, we design and manufacture precision positioning devices that are affordable, integrated, and easy to use. Our devices are used in many different applications and markets, such as photonics and optics, life sciences, microscopy, and industrial automation. SYMETRIE is one of the world's leading providers of hexapod solutions for positioning and motion applications. Since 2001, Symetrie has been designing and manufacturing hexapods for precision positioning, motion simulation and complex custom systems, meeting the needs of industry and research laboratories.



### AKRIBIS SYSTEMS PTE LTD

A513, A512

#### Miniature Stages -AM Series

Product Features: 1.Compact structure 2.Direct drive technology 3.High precision optical encoder 4.High response 5.Flexible standard design Application: It can be used in semiconductor, optical, medical and automation fields. It is suitable for optical assembly and inspection, optical fiber alignment and optimization, sensor testing and validation and other application scenarios

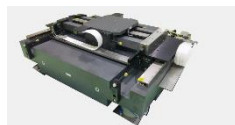


### SHANDONG SHANNENG PRECISION MACHNIERY CO., LTD

D331

#### Precision XY Positioning Stage

Shanneng provides comprehensive solutions for precision air-bearing positioning systems, including: Granite component machining, drive mechanism assembly, on-site installation & commissioning. Leveraging years of expertise in air-bearing structure technology, we deliver high-precision positioning stages with exceptional stability while offering diversified value-added services: custom machining solutions and machine assembly support.



### GUANGDONG KAIFULL ELECTRONIC TECHNOLOGY CO., LTD.

D303

#### Fine-tuning Station: YK- HL6020G-SGN-5-815

Precision electric fine-tuning stages are available in linear, rotary, oscillating, and upgraded versions. They are small in size, compact in structure, and multi-axis configurations are readily available. Alignment accuracy reaches 0.3 $\mu$ m, and they are used in optical fiber coupling stations for optical devices.



# Test and Measurement

## COREMORROW LTD.

C002

### Piezo Nanopositioning Stages

Travel up to 1mm, load up to 80kg, optional sensor; Linear and multi-dimensional motion, optional aperture, vacuum version available; Nanometer resolution and positioning accuracy; Millisecond fast response; Products can be customized.



## TIANSEN

D204

### UVW Positioning Platform

Combined with a vision system through three-axis linkage, UVW alignment stages achieve high-precision positioning—specifically micron-level positioning accuracy and stable repeatability. They offer high motion flexibility, making them suitable for high-demand applications such as precision assembly and optical adjustment. Our products feature a compact structural design, a diverse range of models, and plug-and-play electrical integration. All units undergo strict factory requirements and are fully inspected with laser interferometers before delivery.



## NANJING FOCUS MATERIALS & TECHNOLOGIES CO., LTD.

C133

### Flatness Measuring Instrument

Used to calibrate and measure the flatness of plates of lap and polish machine or the precision grinding machine.



## SHANGHAI XINGQING OPTICAL INSTRUMENT CO., LTD.

D105

### XQ25-G1(250mm Ultra-Large Aperture Vertical Laser Plane Interferometer)

It is more widely used in the production workshop of mass production units for large diameter plane and prism flatness detection, small wedge Angle measurement, and is more suitable for the application of rapid screening of large plate production lines.





# Conference and Event Programmes

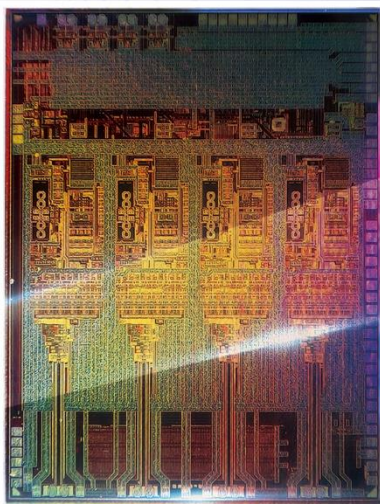
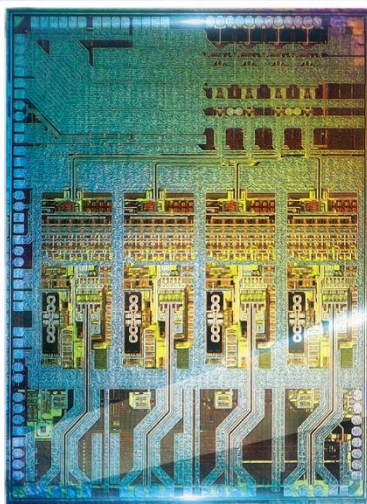
Date	Venue	Conference
4 February 10:00-12:00	Conference Room	2026 Asia Photonics Expo Opening Ceremony & Asia Photonics Conference Plenary Speech
4 February 11:00-12:10	Technical Theatre	<a href="#">Dongguan Excellence Showcase at APE 2026 – Featuring Premium Products &amp; Innovations from Dongguan</a>
4 February 13:30-17:00	Conference Room	Asia Semiconductor Conference 2026 - Singapore Semiconductor Industry Association (SSIA)
4 February 13:30-17:30	Technical Theatre	<a href="#">Quantum Singapore 2026</a>
5 February 9:00-17:00	Conference Room	<a href="#">Photonics@5G 2026 - LUX Photonics Consortium</a>
5 February 10:30-12:30	Technical Theatre	<a href="#">Advanced Semiconductor Manufacturing Forum</a>
5 February 13:00-14:30	Technical Theatre	<a href="#">EPIC TechWatch: Photonics Applications Across Life Sciences, Medical, Semiconductor, and Communications</a>
5 February 15:00-17:00	Technical Theatre	<a href="#">2026 EUROPE meets ASIA - Innovation in Photonics by W3+ Fair, IVAM &amp; EPIC</a>
6 February 10:30-17:00	Conference Room	<a href="#">Asia Photonics Conference</a>
6 February 10:30-12:35	Technical Theatre	<a href="#">Machine Vision Enabling Industrial Intelligent Manufacturing Forum</a>

Date	Venue	Event
4 February 18:00-21:00	LAVO Singapore	<a href="#">Gala Dinner (By Invitation Only)</a>
5 February 17:00-18:00	VIP Lounge	<a href="#">Happy Hour</a>
4 February 13:45-17:30	JM VisTec & MMI Systems	<a href="#">Site Tour</a>
4 February 13:00 -18:00	LITEON & SUTD	
6 February 9:30-13:00	NTU & A*STAR NSTIC	

\* Programmes are subject to change.

# PAM4 ASP 4\*112G TxRx

ms88040 / 89040





# OPTICAL FIBER FUSION SPLICER

Six motors

Core alignment

5s splicing

15s heating

Built-in VFL&OPM Function

APP Bluetooth connection



**11** languages

Exported to over 100 countries and regions worldwide



CHINESE



RUSSIAN



ENGLISH



FRENCH



ITALIAN



UKRAINIAN



THAI



PORTUGUESE



SPANISH



ARABIC



POLISH

## INTEGRATED FIBER STRIPPER&CLEAVER

- Fiber cleaver
- Three-port Miller stripper
- Wire stripping plier
- Kevlar fiber scissors
- Cleaning cotton



SIGNAL FIRE TECHNOLOGY CO., LTD. <http://www.signalfiresplicer.com>

whatsapp: +86 18321465953

E-Mail: [Jason@sczhuoshi.com](mailto:Jason@sczhuoshi.com)





## COMPANY INTRODUCTION



Ningbo Shangjin Automation Technology Co., Ltd. was established in 2015, which is a national high-tech enterprise focusing on the R&D and manufacture of semiconductor packaging equipment and process technology, precision automation equipment.

At present, company's main products include Multi-functional Wire Bonder, Fully Automatic Wire Bonder, Fully Automatic Deep Access Wire Bonder, Fully Automatic Heavy Wire Wedge Bonder and Fully Automatic Die Attach. These products have a wide range of application areas, covering Integrated Circuit, Discrete Device, Optical Communication Device, Laser Device, Microwave Component, Sensor, MEMS, Intelligent Instrument Specialized Device, New Energy Power Device and Power Semiconductor Device, etc.

### Multi-functional Wire Bonder



Wedge Bond



Wedge bonding by Aluminium wire



Ribbon Bond



BBOS/BSOB



### Fully Automatic Wire Bonder



Loop Capability (Ball)



Loop Capability (Ball)



### Fully Automatic Wire Bonder



•BSOB



•BBOS



### Fully Automatic Deep Access Wire Bonder



Wedge Bond



Ultra Low Ultra Short Loop



BBOS/BSOB

### Fully Automatic Heavy Wire Wedge Bonder



Provides programmable bonding shape



Bond point consistency



# MILLIMETER-WAVE DEVICES

TYPE: BIAS-TEE/DC-BLOCK/POWER DIVIDER



## Typical Applications

- Data Transmission
- Aerospace systems
- Optical Communications
- RF test and measurement



▶ Ultra Broadband

▶ Low VSWR

▶ Low Insertion Loss

▶ Excellent Group Delay

▶ Ultra-Competitive Price

▶ High RF Performance

## Specifications

Typical Model	BT110A	DCB110-16	PD20110AY-LI
Frequency(GHz)	50KHz~110GHz	50KHz~110GHz	DC~110GHz
Nominal Impedance( $\Omega$ )	50	50	50
Insertion Loss(dB)	1.5 Typ.	1.5 Typ.	7.5 Typ.
VSWR(:1)	1.35 Typ.	1.3 Typ.	1.5 Typ.
Isolation(dB)	-	-	7.5 Typ.
Group Delay Ripple(ps)	$\pm 50$	$\pm 50$	-
Amplitude Imbalance(dB)	-	-	$\pm 0.8$ Max.
Phase Imbalance(deg)	-	-	$\pm 10.0$ Max.
Power Handling	32dBm	32dBm	1W
DC Resistance( $\Omega$ )	2.75 Typ.	-	-
DC Voltage(V)	16	16	-
DC Current(A)	0.4	-	-
Connectors	1.0-m/f, SMA-f	1.0-m/f	1.0-f
Operating Temperature( $^{\circ}\text{C}$ )	+10 ~ +50	-20 ~ +60	-40 ~ +85

\*Note:These devices are available in a variety of frequency bands, models and interface configurations. The table serves as a typical data reference.





# 2.5D/3D EDA<sup>+</sup> New Paradigm

New Requirements

New Paradigm

New Industrial Hierarchy

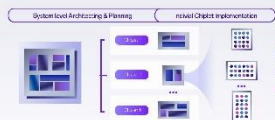
2.5D/3D  
Advanced Packaging EDA

All-New **EDA<sup>+</sup>**  
for the New Era

Chiplet Library  
Ecosystem Development

## 3Sheng<sup>®</sup> Integration Platform 2.5D/3D IC EDA

### 3Sheng Zenith<sup>®</sup> Architecture Design



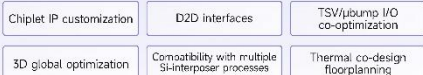
Chiplet splitting needs to start from the top-level architecture division

Chiplet partition, IP implementation, µbump plan from D2D interconnection

### 3Sheng Ranger<sup>®</sup>

#### Physical Implementation

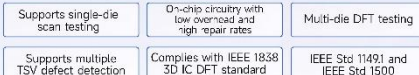
A complete 2.5D chiplet/3D partitioning layout and routing physical design solution with multi-objective collaborative optimization



### 3Sheng Ocean<sup>®</sup>

#### Multi-Die DFT

Multi-die DFT & Fault Tolerance



### 3Sheng Volcano<sup>®</sup>

#### Co-Simulation



Thermoelectric (TEC) analysis for H2O in advanced packaging

Thermal and electrical co-simulation

Design simulation

Thermal and electrical co-simulation

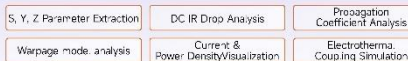
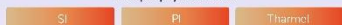
Thermal and electrical co-simulation

Thermal and electrical co-simulation

Thermal and electrical co-simulation

Thermal and electrical co-simulation

Unified physical simulation platform for collaborative analysis of multiple physical fields

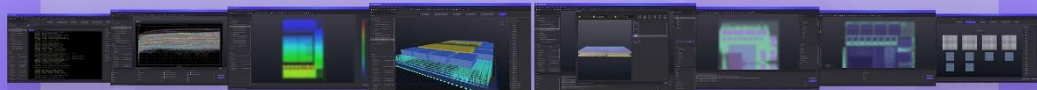
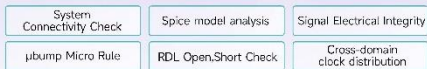


### 3Sheng Stratify<sup>®</sup>

#### Multi-Die Physical Verification



System-level connectivity check, Multi-die DRC/routin support



Website: [www.sichiptech.com](http://www.sichiptech.com)

Contact: [info@sichiptech.com](mailto:info@sichiptech.com)



# 名正（浙江）电子装备有限公司

Mingzheng Zhejiang Electronic Equipment Co., Ltd.

## PRODUCT NAME: MZD35BV

High-precision ultra-large double side lapping & polishing machine

## COMPANY PROFILE:

We have the specialized manufacturing technology for single side and double side lapping & polishing machines. Provide various solutions according to customer requirements.



## APPLICATION FIELD:

Our products serve multiple industries, including semiconductor materials (represented by silicon wafers and silicon carbide wafers), precision optical materials (represented by AR/VR optical components), as well as crystals, ceramics, metal components, and magnetic materials.

Address: 11th Floor, Building C, Future Technology Plaza, Xiuzhou District, Jiaxing City, Zhejiang Province, China

Email: mz-zhangzheng@cn-mingzheng.com

Tel: 0573-82209989

Web: www.cn-mingzheng.com



恒泰光学设备

Hengtai Optical Equipment



## Company Profile

Shangrao Hengtai Optical Equipment Manufacturing Co., Ltd. was founded in 2007 and is located in Shangrao Economic and Technological Development Zone, Jiangxi Province, China. Covering a total area of 78,500 square meters across its two factories, the company's equipment is widely used in the fine grinding, lapping, and polishing of various optical lenses such as those for mobile phones, security, automotive, astronomy, and sapphire applications.

In recent years, with the trust and support of numerous customers, the company has achieved steady development and continuously strengthened its R&D and innovation capabilities. It is a preferred brand for domestic and foreign customers in the field of optical lens fine polishing equipment. The company has been recognized as a National High-Tech Enterprise, a Specialized, Refined, Characteristic, and Innovative Enterprise, and has obtained multiple invention patents. Adhering to the corporate spirit of "Continuous Innovation, Pursuit of Excellence, and Customer-Oriented Service", we are steadily advancing towards the goal of becoming a leading brand in optical cold processing equipment manufacturing.



Grinding/Polishing machine



Automatic Chamfering Machine



Automatic polishing machine



Grinding/Polishing Machine



Automatic grinding/polishing machine

## Main Products

Upper and lower swing automatic polishing machines; automatic edge chamfering and polishing machines; small lens fine grinding, lapping, and polishing machine series; medium and large lens fine grinding, lapping, and polishing machine series; cylindrical lens lapping and polishing machine series; plane and prism lapping and polishing machine series; optical lens, mobile phone panel, and centrifugal dryer series; optical glass cutting machine series; sapphire fine grinding and polishing machine series; aspherical and spherical fine grinding and polishing machines, etc.

TEL: 13979358518

E-mail: 13979358518@163.com

ADD: No. 8, Tuozhan Road, Xinke Avenue, Economic and Technological Development Zone, Shangrao City, Jiangxi Province, China





IICIE

INTERNATIONAL  
INTEGRATED CIRCUIT  
INNOVATION EXPO

# 2026 INTERNATIONAL INTEGRATED CIRCUIT INNOVATION EXPO

🕒 September 9-11, 2026

📍 Shenzhen World  
Exhibition & Convention Center

Exhibition Area  
60,000 m<sup>2</sup>

Exhibitors  
1,100<sup>+</sup>

Visitors  
60,000<sup>+</sup>



IICIE AT A GLANCE



BOOTH APPLICATION



CHINA INTERNATIONAL  
OPTOELECTRONIC EXPO

# NEXT STOP CHINA CIOE 2026

THE 27TH CHINA INTERNATIONAL OPTOELECTRONIC EXPO

**SEPTEMBER 9 - 11, 2026**

SHENZHEN WORLD EXHIBITION & CONVENTION CENTER



CIOE AT A GLANCE



BOOTH APPLICATION

**APE** Asia  
Photonics  
Expo

**SEE YOU NEXT YEAR**

# APE 2027

SANDS EXPO AND CONVENTION CENTRE, SINGAPORE



APE AT A GLANCE



SUBSCRIBE US

# WANHUA CHEMICAL

## Corporate Profile

As a multinational chemical company, with continuous technology innovation, large-scale commercialized facilities and ultra-efficient operation model, Wanhua Chemical Group Co., Ltd provides competitive products and solutions to the clients.

Taking "Advancing Chemistry Transforming Lives" as our mission, Wanhua Chemical has always been adhering to innovation and industry structure optimization.

## 5 Product Categories

- Polyurethanes
- Petrochemicals
- Performance Chemicals
- Emerging Materials
- Future Industry

## 7 Fields of Application

- Homeware and Furniture
- Sports and Leisure
- Automobiles and Transportation
- Building and Construction
- Electronics and Electrical Appliances
- Personal Care
- Green Energy



LinkedIn



YouTube



en.whchem.com



Wechat

WANHUA CHEMICAL GROUP CO., LTD.  
Add: No.3, Sanya Road, YEDA, Yantai,  
Shandong Province, China  
Tel: 4009600309