

APE 2026

PRODUCT BROCHURE

Source: APE Digital Showroom | Updated as of 9 December 2025

Part 1

4 - 6 February 2026

Sands Expo and Convention Centre, Singapore



REGISTER FOR
YOUR FREE PASS



JOIN APE'S WHATSAPP
COMMUNITY

Table of Contents

Product Category	Segmentation	Page
Quantum		
Quantum Technology	Quantum Measurement & Quantum Communication	4
Semiconductor		
Semiconductor Equipment	Die Bonder	5-6
Semiconductor Equipment	LED UV Curing Machine	7
Semiconductor Equipment	Dicing Saw/Dispensing Machine/Lithography Machine	8-9
Semiconductor Equipment	Core Parts	10
Fabrication and Packaging Service		11
Semiconductor Material	Substrate/Target/Heat Sink/Film/Adhesive	12-14
Optical Communication		
Optical Communication Chip		15
Optical Communication Module		16
Optical Communication Device	Active Device	17-18
Optical Communication Device	Passive Device	19-21
Optical Communication Transmission Equipment	WDM	22
Optical Communication Transmission Equipment	ONU and Router	23
Optical Fiber Cable	Patch Cord	24
Cable & Wire		25
Wiring Product	Distribution Box/Patch Panel	26
Cable Manufacturing Equipment	Fusion Splicer/Cutting Machine	27

* The above is a partial list of APE 2026 exhibitors. Additional exhibitors will be featured in Part 2 of the product brochure.

Table of Contents

Product Category	Segmentation	Page
Precision Optics		
Optical Material		28
Optical Component	Lens	29-30
Optical Component	Window/Filter	31
Optical Component	Mirror/Prism	32
Optical Component	Automotive/Medical Optics	33
Optical Component	AR/VR Optics and Optical Design Software	34
Camera Lens		35
Optical Processing Equipment		36-37
Optics Fabrication		38
Optical Coating Service		39
Optical Coating Equipment & Parts		40-42
Laser, Infrared and Sensing		
Laser		43-44
Laser Component		45-46
Laser Equipment		47
Infrared Component		48
Infrared Lens		49
Infrared Device		50
LiDAR and Sensing		51
Test and Measurement		
Optical Test and Measurement		52-53
Test and Measurement	Semiconductor	54
Test and Measurement	Alignment Equipment	55
Test and Measurement	Spectroscopy	56
Test and Measurement	Microscope	57
Test and Measurement	Imaging Measurement	58
Test and Measurement	AOI	59
Test and Measurement	Positioning System	60-61
Conference and Event Programmes		62

* The above is a partial list of APE 2026 exhibitors. Additional exhibitors will be featured in Part 2 of the product brochure.

Quantum Measurement/Quantum Communication

ACEXON TECHNOLOGIES PTE LTD

B311

TOPTICLOCK - Optical Quantum Clock

TOPTICLOCK – the world's first commercial optical quantum clock based on a trapped Yb⁺ ion. This breakthrough marks a major step in bringing quantum technology out of the lab and into real-world applications. With TOPTICLOCK, scientists and industry pioneers gain access to unprecedented precision in timekeeping – opening doors for cutting-edge research, and next-generation satellite navigation systems. TOPTICLOCK sets new benchmarks in: Time scales & time services (e.g. National Metrology Institutes, TAI contributions) Network synchronization Satellite navigation Long-term holdover in GNSS-denied environments Fundamental research & precision measurements



OPTOSIGMA SOUTHEAST ASIA PTE LTD

B301

Quantum Technology

OptoSigma supplies Superconducting Nanowire Single Photon Detector (SNSPD) systems capable of achieving high detection efficiency (up to 98% at 1550 nm), wide range for detection (400 nm - 3000 nm) as well as low timing jitter (<50 ps) with up to 32 detection channels. OptoSigma also provides educational platforms based on NV diamond technology that enables basic concepts of quantum physics and engineering to be demonstrated. Additionally, OptoSigma supplies ultra-narrow linewidth and single frequency lasers from UV to IR wavelengths. Target applications include quantum key distribution, quantum random number generation, quantum computing and quantum communication.



QUBIG GMBH

A221

Single-Photon Demultiplexing Systems (DMX)

Single-photon demultiplexing refers to the process of separating and extracting individual photon signals from a composite stream of photons. This technique is crucial in quantum communication and quantum information processing systems, where the ability to manipulate and detect individual photons is essential. It enables the extraction of quantum states carried by photons and facilitates various protocols such as quantum key distribution (QKD) or quantum teleportation. QUBIG offers low optical loss spatial demultiplexing systems with single-photon repetitions up to 160MHz and up to 16 channels.



TNO SCIENCE AND INDUSTRY

C204

Quantum SatCom

Quantum computing is expected to solve some of the biggest challenges of our time. From predictive analysis to material design, from pharmaceutical development to the processing of enormous data sets. Yet building a sufficiently powerful quantum computer is extremely challenging. A promising solution is to connect smaller quantum computers via a network in which quantum information is shared, so that their capacity can be combined. TNO has set an ambitious roadmap to make such a global quantum internet possible – and this will most probably require satellites in space.



Die Bonder

MRSI AUTOMATION (SHENZHEN) CO., LTD

B214

MRSI-H1 Family 1-Micron Flip-chip Die Bonders

Product Features: · Proven exceptional flexibility and reliability for true high-mix, high-volume production of multiple chips, processes, and products. · High precision design with a patented zero-time tool change turret design, identical to the best-selling MRSI-HVM. · Optional loading/unloading conveyors available. · This series enhances efficiency by increasing parallel material handling without sacrificing flexibility, accuracy, or reliability. · Configured according to the process characteristics of different application fields, classifying the H series products accordingly. Application Areas: Optical transceivers and other photonic devices, RF and microwave devices, high-power laser applications, and TO header packaging applications.



SUZHOU BOZHON SEMICONDUCTOR CO.,LTD A504

MicroStar Series EF8622 Eutectic Die Bonding Machine

EF8622 is a fully automatic eutectic die bonder designed for high-precision, multi-chip packaging in optical communications and data center applications. It supports eutectic and dipping processes with $\pm 1.5\mu\text{m}@3\sigma$ accuracy, dual-station parallel operation, and 12-nozzle dynamic tool change. The system integrates an air-floating platform and dual-pulse heating to enhance alignment stability and thermal uniformity, with AGV and multi-carrier compatibility for high-yield, low-intervention production.



SHENZHEN ALT PRECISION TECHNOLOGY CO., LTD.

A113

Die Bonder

isRhea2030 is a high-precision die bonding device designed for optical communication packaging. It achieves a maximum placement accuracy of $\pm 1.5\mu\text{m}@3\sigma$. Its open modular structure design provides greater production flexibility, and, when paired with an adjustable track-width transport system, it supports multiple types of chip feeding and both flip-chip and standard mounting processes. The system is capable of fully automated mass production, including chip feeding, glue dipping or dispensing, wafer alignment, placement, UV curing, and post-bonding inspection, meeting the production requirements for COB/BOX silver paste processes.



LASER X TECHNOLOGY (SHENZHEN) CO.,LTD. A808-17

Automatic High Precision Die Bonder

Product Features

1. Achieving $\pm 3\mu\text{m}/\pm 5\mu\text{m}$ XY placement accuracy
2. COB, BOX etc multi-chip bonding capability
3. Auto bond-tool change, up to 4 bond-tool buffers
4. Supports epoxy stamping and dispensing
5. Auto wafer change, up to 4 x 6" wafer ring
6. Optional: Waffle pack, Gel-Pak, tray or by request



Die Bonder

MICROVIEW INTELLIGENT PACKAGING TECHNOLOGY (SHENZHEN) CO., LTD

B101

1.5μm High-speed Bonder Mbonder-HGM

- ① High precision collaboration;
- ② Multi chip application;
- ③ High speed mounting;
- ④ Efficient material transfer: fully automatic loading and unloading system, assembly line material transfer system;
- ⑤ Multilingual software interface;



MICROVIEW INTELLIGENT PACKAGING TECHNOLOGY (SHENZHEN) CO., LTD

B101

Mbonder-HFF

- ① High Accuracy: Glass die $\pm 1.5\mu\text{m}$
- ② Multi-Function: Supports for different process including Eutectic, Stamping, Dispensing, UV curing etc.
- ③ Multi-chips application: Supports for up to 100 different types of suction nozzles with fully automatic replacement
- ④ High flexibility software: Supports different product applications and allows for free switching of multiple process applications.



SUZHOU LIEQI INTELLIGENT EQUIPMENT CO.,LTD

A314

LQ-VADB30P Real-Time Alignment Die Bonder

LQ-VADB30P Peculiarity: Fully Automatic Loading/Unloading Conveyor System; Applicable for COB (Chip-on-Board) and BOX Deep-Cavity Real-Time Alignment High-Precision Multi-Chip Hybrid Mounting; Supports 6-inch Blue Film, Wafer Cassettes, Gel-Pak, and Other Feeding Methods; Multi-Crystal/Component Handling Capability with Support for Up to Five Chip Sizes; Integrated Nozzle Magazine with Automatic Nozzle Change Function; Standard Placement Accuracy: $\pm 1.5\mu\text{m}$;



SUZHOU LIEQI INTELLIGENT EQUIPMENT CO.,LTD

A314

HS-DB3000 Multi-Chip Die Bonder

HS-DB3000 Product Overview: The CE-certified HS-DB3000 is a high-speed multi-functional die bonding system designed for high-volume industrial manufacturing. Featuring an adjustable-width conveyor system for seamless integration with production lines, it incorporates a 12-inch wafer loading system, automated wafer stage, and programmable nozzle assembly to meet diverse chip placement demands. Its modular architecture enables flexible customization, while intelligent calibration and data management systems ensure full process traceability and user-friendly operation.



LED UV Curing Machine

EPOXY AND EQUIPMENT TECHNOLOGY PTE LTD

B511 Technodigm LED UV Curing Systems

Technodigm's latest range of modular LED UV light sources offers an unprecedented level of customization, allowing businesses to configure their curing environment exactly to the way they need. No more one size fits all solutions that forces you to compromise. Benefits: 1. Multiple wavelength options available ensuring compatibility with a wide range of UV curable material 2. Precision and uniform curing results 3. Scalable for production efficiency



DOU YEE ENTERPRISES (S) PTE LTD

B512

Hoya UV LED Technology

Key Features: -Neuron Microchip Network -Constant Monitoring - Intelligent Indicators -Intuitive GUI -Aesthetic Power Supply Architecture -25W/cm2 Peak Irradiance -Digital AC/DC Converter - Modular Maintenance Structure



WUHAN IBRNTECH CO., LTD.

D301

UVLED Curing

IBRN Industrial Curing Products include UVLED spot/line/area curing light, intelligent UVLED curing oven, UVLED curing tunnel, UVLED curing hand-held machine, UVLED inkjet curing machine and UVLED system for optical fiber drawing/coloring coating curing. Our products have the characteristics of strong irradiation, better and more stable curing quality, less heat generated, cost saving, network up time and long life. All products are equipped with multi-language human-computer interaction industrial color screen, and with adjustable power accuracy from 1% to 100% as well as fault detection function. The products are widely used in 3C electronics, optical communications, optical fiber & cable, inkjet printing.



Dicing Saw/Dispensing Machine/Lithography Machine

DISCO HI-TEC (SINGAPORE) PTE LTD

A332

DFL7362 is a fully-automatic laser saw for $\Phi 300$ mm wafers, which is compatible with various processes to achieve high-speed, high-quality processing of ultra-thin silicon wafer. Si with a thickness of 50 μm or less can be singulated at high speed while maintaining high die strength. The equipment offers both wafer and frame transferring, making it possible to support a wide range of applications. DISCO can offer smooth sidewalls with our SDBG process, and is the machine of choice for many photonics manufacturers.

DFL7362 Fully Automatic Laser Saw



DISCO HI-TEC (SINGAPORE) PTE LTD

A332

Flagship model for $\Phi 300$ mm wafers with high process extensibility. Compatible with both frame and two-way (frame/wafer) transferring. Various processes, including full cut and half cut, can be supported with only one DFD6363. Size conversion operations can be reduced, reducing human error. Supports both standard cassettes ($\Phi 200$ mm / $\Phi 300$ mm) and FOUP cassettes.

DFD6363 Fully Automatic Dicing Saw



DOU YEE ENTERPRISES (S) PTE LTD

B512

FAD5100WH - Dispensing Machine

"5 Major Functions" for high throughput and high-quality dispensing:
High-speed dispensing with uninterrupted, continuous operation
High-speed alignment with uninterrupted, continuous operation
Automatically controls dispensing quantity Forms "leaf line"
dispensing patterns that are ideal for avoiding voids Prevents large numbers of defects from occurring



WUHAN IBRNTECH CO., LTD.

D301

Lithographic Exposure

IBRN Lithography Exposure Products adopts freeform surface optical design technology and the inorganic packaging process of aluminum nitride on the independent packaging and testing production line, achieving industry-leading performance with a parallel half-angle of the output light less than 1.2° and an output light uniformity of more than 97%. Supporting multi-wavelength integrated customization, it provides reliable exposure solutions for the microelectronics and precision manufacturing industries, with technical indicators reaching international advanced levels.



**HEBEI THAHOO PHOTOELECTRIC
TECHNOLOGY CO., LTD.**

B106

**Compound Semiconductor Chip
Scribing/Splitting Machine**

The compound wafer scriber is a device that utilizes a diamond scribing tool to create precise lines on wafers or bars made from materials such as GaAs, InP, GaN, SiC, and AlN. It is capable of scribing wafers or bars up to 6 inches in size and is designed for automatically scribing chips, including photodetectors (PD), laser diodes (LD), and high-power chips. This device features automatic loading and unloading capabilities, as well as pre-scanning functions. It employs high-precision alignment cameras to ensure accurate positioning of chips. Additionally, it supports automatic loading and unloading by robots. The scribing pressure and the


**SHENZHEN THANS VIBRATION
ISOLATION TECHNOLOGY CO., LTD.**

C124

THS3 Advanced Vibration Isolator

Multi-directional ball-type design makes the natural frequency of the vibration isolation system lower, thus results in better performance in both vertical and horizontal direction. For better repeatability, precision leveling valves of 0.05mm should be installed. THS3 series can be used with external oil damper, it will shorten the settling time of the moving platform and increase the stiffness of the system.


**SHENZHEN THANS VIBRATION
ISOLATION TECHNOLOGY CO., LTD.**

C124

**THZ1 Pneumatic Vibration
Isolation Platform**

Small special air spring system, light and portable, easy to install. The platform has good stability and can use stainless steel panel or optical breadboard. Equipped with horizontal leveling valve. Mainly used in SEM.



Core Parts

DOU YEE ENTERPRISES (S) PTE LTD

B512

HyperJet2 - Jetting Valve

Synchronized speed multi-; pre-set, Running out of indication spare USB communication during Japanese and English, RS-232C communication



AKRIBIS SYSTEMS PTE LTD

A513, A512

Servo Motor And Driver

Akribis servo motors feature optimized magnetic circuit (30% energy saving), IP67 protection, flexible configuration, plug-and-play electronic nameplate and absolute encoder for diverse harsh industrial applications. Akribis servo drive series encompasses a full range of AC/low-voltage drives, including economical, standard and high-performance series. It features compact size, high efficiency and energy savings, high precision and fast response, and is capable of meeting the demanding motion control requirements in various scenarios.



PIEZOELECTRIC TECHNOLOGY CO., LTD.

B104

Auto Focus Module

This AF module uses a piezoelectric actuator (known as an ultrasonic motor) manufactured by us as a driving source. We review the product and provide concept design based on the customer's application and needs. However, we can provide concept designs if our actuators can be applied. For this, we need your requiring specifications, such as the dimension the space where our product can be placed, operating speed, precision, and applicable load. Our products are characterized by motors that are relatively quiet, fast-responding, small, lightweight, and unaffected by electromagnetic environments. Prototype production takes approximately 6-8 weeks after the design is confirmed.



JINYUAN

D213

Product Components

Core components for aerospace, semiconductors, medical, oil & gas, security, etc.

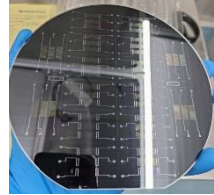


OPTO PRECISION PTE LTD

B533

Microfabrication And Packaging Solutions

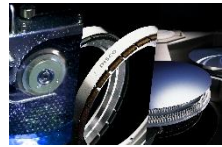
We provide advanced microfabrication and packaging solutions for Microfluidic devices, Semiconductor components, and Optoelectronic applications. Our capabilities include micro-structuring for holes and cavities, wet etching for anti-glare glass, TGV (Through Glass Via) and TSV (Through Silicon Via) interconnects, and UVA, UVC, UHB LED and OLED packaging caps, enabling precise, reliable, and high-performance devices for a wide range of industries.

**DISCO HI-TEC (SINGAPORE) PTE LTD**

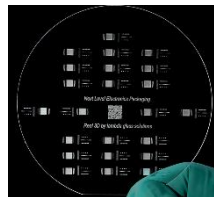
A332

KKM Service

We provide our customers with the best processing results through our cumulated knowledge of Kiru (cutting), Kezuru (grinding) and Migaku (polishing) technologies. DISCO offers our in-house dicing and grinding service as a means for our customers to cope with unexpected market trends. Our service, termed as "KKM Service", can be utilised for product development and small lot productions. For new difficult devices, it is important to ensure proof of production feasibility and quality before committing to any huge capital expenditure. DISCO is able to optimise the entire dicing and grinding process flow before mass production starts.

**LAMBDA GLASS SOLUTIONS GMBH & CO.KG** C206 **Packaging Solutions in Quartz Glass**

Full 3D Design Freedom (e.g. Helical Vias) · Ultra-dense Miniaturization (15 µm Bore Arrays) · Micrometer-level Precision (5 µm 3D Pockets) · Reliable Quartz Glass Integration

**FLC GLOBAL, INC.**

A521

Advanced Optical Packaging & Integrated Manufacturing

We integrate SMT, FPCBA, COB, Flip-Chip, SiPh, and CPO processes to deliver full Turnkey manufacturing from board-level assembly to Box-Build. With supply chain control, full traceability, and reliability testing, we help customers build high-density, high-performance optical modules for AI and next-generation communications.



Substrate/Target/Heat Sink

JIANGSU FERROTEC SEMICONDUCTOR TECHNOLOGY CO.,LTD.

A322

DPC Copper Plated Ceramic Substrates

DPC (Direct plating copper) realizes the metallization of ceramic surface by magnetron sputtering and graphic plating technology, and then improves the oxidation resistance and solderability of substrate by finishing treatment, so as to realize the precision line, and has better flatness and stronger bonding force.



JIANGSU FERROTEC SEMICONDUCTOR TECHNOLOGY CO.,LTD.

A322

AMB Copper Bonded Ceramic Substrates

AMB (Active Metal Brazing) is a further development of DCB technology. It is a method of bonding ceramic and metal by using a reaction layer generated by the reaction between a small amount of active elements contained in brazing filler metal and ceramic, which can be wetted by liquid brazing filler Metal.

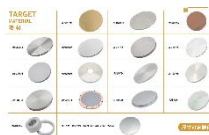


FUJIAN ZI JIN INNOVATION APPLIED MATERIALS CO.,LTD

C222

Target Material

Zijin Mining is rich in mineral resources, which provides a stable guarantee for the supply of raw materials for target products, while reducing the production cost. It has technical advantages in the extraction and purification of precious metals, can produce high-purity precious metal and alloy targets, meet the needs of high-end industries such as semiconductors, and constantly innovate in target preparation technology to promote the expansion of product performance and application fields.



HOTLONG

D203

Heat Sink

Composite Diamond Material (CD) is a high thermal conductivity substrate material with a thermal conductivity of up to 600 W/mK and a coefficient of thermal expansion (CTE) of 3.00 ppm/K. It is suitable for small heat source devices, such as laser diodes (LD), laser diode arrays (LDA), and high-power microelectronic devices.



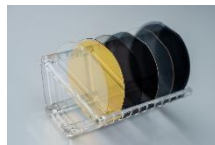
Thin Film/Polyimide Protection

JINAN JINGZHENG ELECTRONICS CO., LTD

A005

Lithium Niobate Thin Films

Lithium niobate thin film is a thin film made of lithium niobate (LiNbO_3) material, which has many excellent properties and has been widely used in the fields of electronics, optics, and communication. Lithium niobate is used to produce high-performance devices such as high-speed electro-optic modulators and high-performance acoustic filters, which are applied in data centers, long-distance data transmission, mobile phones, base stations, etc., to meet the high bandwidth and high-frequency RF market requirements of the next generation of wireless networks.

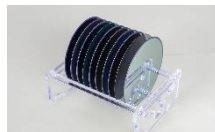


JINAN JINGZHENG ELECTRONICS CO., LTD

A005

Lithium Tantalate Thin Films

LTOT wafers are used for making high-performance filters used in mobile phones and other wireless communications areas. Advantages of thin film lithium tantalate filters: High quality factor (Q), low insertion loss, and high steepness, stable F_s , $K_{e2} > 10\%$, low TCF ($0 \pm 8 \text{ ppm}/^\circ\text{C}$), efficient heat dissipation and reduced manufacturing cost.

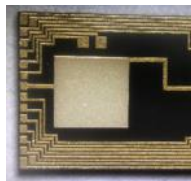


COREWAY OPTTECH CO.,LTD

A532

Series D - AuSn Solder Integrated

The process of integrating Gold-Tin (AuSn) solder products is to pre-form AuSn solder on thin-film circuit chips. AuSn solder has high thermal conductivity and excellent reliability of eutectic welding. It can be widely used in high-power LED, electric vehicle and other microelectronic fields. At the same time, it can also be used in the field of optical communications, lasers and other optoelectronic devices.

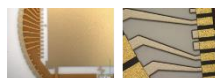


COREWAY OPTTECH CO.,LTD

A532

Series C - Complex Metallization, Polyimide Protection

Using laser drilling to make irregular shape with different materials. Polyimide can be used as a protective layer to effectively prevent acid and alkali corrosion, high temperature resistance (above 300°C), radiation protection and high insulation.



Adhesive

EPOXY AND EQUIPMENT TECHNOLOGY PTE LTD

B511

EMIUV Optocast Adhesives

EMIUV OPTOCAST range of adhesives are designed for fast, precision bonding and aligning of optoelectronic devices and components. These products feature low stress, optical clarity, minimal shrinkage upon cure, extremely low CTE values, and excellent moisture resistance. Available in a wide range of physical properties and curing options, there is an OPTOCAST adhesive for virtually any optoelectronic application or manufacturing process.

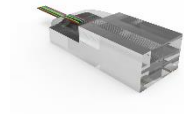


SHANGHAI SUPERBOND NEW MATERIALS LTD

A011

5527B

5527B is an epoxy adhesive used in fiber optic arrays. This product features excellent fluidity, a simple process, and is applicable to various specifications and models.



SHANGHAI SUPERBOND NEW MATERIALS LTD

A011

5586A

5586A: Quick positioning, good initial strength and excellent water resistance after dual cure; Extremely low shrinkage stress and extremely low outgassing and will not cause contamination of components.

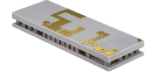


HANGZHOU ADVANCED THERMAL TECHNOLOGY CO.,LTD

A321

TEC

The product has the characteristics of high reliability, good stability, strong consistency, long life, fast refrigeration speed, good time response, deep refrigeration temperature and high efficiency

**WOORIRO CO., LTD**

B103

CWDM Chip

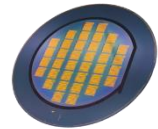
CWDM Mux/Demux chips are bi-directional passive optical multiplexers and demulti-plexers allowing multiple optical signals at different wavelengths. The grating combines or separates up to 4 different wavelength signals

**WUHAN ANPL OPTOELECTRONICS CO., LTD**

A006

Thin Film Lithium Niobate Modulator Chips

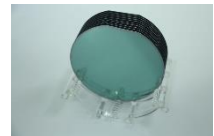
Thin-film lithium niobate 4/8-channel array modulator chip, ultra-high bandwidth, small size, low driving pressure, based on 8-inch tape-out process, large production capacity, high yield, suitable for 200G/Lane and 400G/Lane high-speed optical transceivers.

**SHANGHAI NOVEL SI INTEGRATION TECHNOLOGY CO., LTD**

A201

4/6/8-inch TFLT

Lithium Tantalate (LiTaO₃) exhibits excellent piezoelectric, ferroelectric, acousti-optic and electro-optic effects. Acoustic-grade Thin-film Lithium Tantalate (TFLT) can be used to manufacture acoustic resonators and filters with high-frequency and wideband, which are applied in important fields such as mobile communications. Also, TFLT, with its low optical loss, low birefringence and outstanding electro-optical conversion properties, has become one of the core materials for next-generation integrated photonic and quantum devices



GUANGZHOU VISINT COMMUNICATION TECHNOLOGY CO., LTD

A104

Optical Transceiver

Provides optical transceiver covering 1G to 800G at full rates to meet the differentiated requirements of data centers, 5G bearer networks, enterprise networks and industrial interconnection scenarios.

**FLC GLOBAL, INC.**

A521

Next-Generation Optical Transceiver JDM Co-Design

We provide JDM co-design with early engineering input, manufacturability review, and cost optimization. With Flip-Chip, SiPh, LPO, multi-chip integration, and 008004 assembly capabilities, we support 800G, 1.6T, and future 3.2T optical module development, enabling faster, more reliable product launch.

**T&S COMMUNICATIONS CO., LTD.**

B202, B201

800G QSFP-DD Fiber Optic Transceiver

This transceiver is an 8-Channel, Pluggable, Fiber Optic QSFP-DD transceiver for 800Gbps SR8 Applications. It is a high performance module for short-range data communication and interconnect applications which operate at 106.25Gbps per lane up to 30m using OM3 fiber and 50m using OM4 fiber. The optical interface uses MPO receptacles. This module is designed to operate over multimode fiber systems using a nominal wavelength of 850nm. The electrical interface uses a 76 contact edge type connector.

**FLYIN GROUP CO., LTD**

A213, A214

Optical Transceiver

Optical Transceivers stand out in the market for their compact size, hot-swappable design, and versatility. They support high-speed data transmission over various distances and media types. Cost-effective and energy-efficient, SFP modules offer flexibility in network upgrades and expansions, ensuring seamless integration and scalability.



Active Device

QUBIG GMBH

A221 Broadband Phase Modulators (TWP)

Laser Frequency control in the UV (313nm) to NIR (1100nm) optical range is a key element in the implementation of high-precision Quantum technologies. QUBIG's traveling wave broadband phase modulators (TWP-series) and their matching drivers (QDB) can be equipped with nifty features to provide a robust and versatile frequency offset lock over a span of up to 20 GHz between a laser and a stable frequency reference, such as an optical cavity, another laser (master), or an atomic transition.

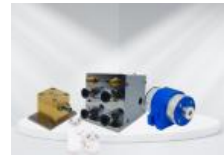


WAVELENGTH OPTO-ELECTRONIC (S) PTE. LTD

B514

Optical Modulators

Optical modulators are essential components in the manipulation and control of light in optical systems. These devices are commonly used in laser systems, telecommunications, and scientific research, playing key roles in modulating, isolating, and directing light beams with precision. Optical modulators provide comprehensive solutions for managing light in complex optical systems, offering control, protection, and optimization for a wide range of photonic applications.

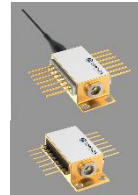


PRECISION TECHNOLOGIES PTE LTD

B323

Topptica Eagleyard miniTA, miniECL, DFB Laser Diodes, Tapered Amplifiers, Multimode Laser Diodes, Gain Chips

TOPTICA EAGLEYARD is a global leading provider of high power laser diodes with wavelengths from 630 nm – 1120 nm based on GaAs (Gallium Arsenide). Our products combine maximum power, highest durability and excellent beam quality – a perfect match for high-end applications. Our newest product launches: Our fiber-coupled miniECL for an easy plug & play solution with our miniTA family is available at many wavelengths. New: miniTA at 810 nm.



WOORIRO CO., LTD

B103

SPAD (Single-Photon Avalanche Diode)

InGaAs/InP Geiger-Mode Avalanche Photodiode Optimized for 1000 to 1600nm Wavelength 10MHz ~ 1GHz Gating Frequency Operation Built-In 3stage TEC (Thermo-Electro Cooler)



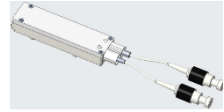
Active Device

HIIC-TECH(QINGDAO)MICROELECTRONICS CO. LTD

A808-7

DWDM Optical Module

DWXX11001-CFYXXX is a high-performance DWDM optical transceiver module. The transmitter utilizes an EML laser, and the module incorporates a built-in temperature control circuit. The receiver employs a high-sensitivity ROSA to enhance link budget. The electrical interface uses a 12-pin pin header, while the optical interface adopts an FC connector. High-speed signal pins operate on AC-coupled CML levels, and the module features I2C communication, with an operating temperature range of -40°C to 70°C.



CHANG YING TONG

D212

Optical Module for FOG

This series optical module is an optical component applied to ultraminiature closed-loop fiber optic gyroscope (FOG) and also a special optical module that is fused and assembled by fiber-optic coils and optical devices (Y-waveguide, coupler, photodetector, light-source) in the order of gyroscope's optical path. It can replace fiber-optic coil, Y-waveguide and other separated parts for direct modular installation on the gyroscope, thus simplifying the assembly process of the gyroscope.

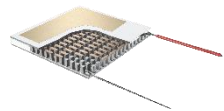


HANGZHOU ADVANCED THERMAL TECHNOLOGY CO.,LTD

A321

Thermoelectric Modules

The product has the characteristics of high reliability, good stability, strong consistency, long life, fast refrigeration speed, good time response, deep refrigeration temperature and high efficiency



WUHAN ANPL OPTOELECTRONICS CO., LTD

A006

Thin Film Lithium Niobate IQ Modulator

IQ modulation is realized based on dual-channel parallel thin-film lithium niobate optical intensity modulation, which has a wide range of applications in coherent communication, single-sideband modulation, carrier suppression, linear modulation, etc., and has the characteristics of large bandwidth, low driving voltage and high stability.



Passive Device

EDMUND OPTICS SINGAPORE PTE LTD

B303

Waveplates

Waveplates, also known as Retarders, are used to transmit light while modifying its polarization state without attenuating, deviating, or displacing the beam. Waveplates are commonly used to rotate linear polarization or transforming linear polarization into circular polarization, and can be used in optical isolators. Retarders are designed to operate with light that have existing polarization states. Using a Waveplate with unpolarized light will not have any impact on its polarization state and the light will remain unpolarized. Waveplates consist of birefringent, crystalline or polymer materials that create a phase shift between the polarization components.



KOREA ADVANCED MATERIALS CO.LTD

B102

AWG Module

KAM's unique technology of PLC (Planar Lightwave Circuit) and AWG allows us to produce key components for long haul, front haul and Metro network construction. Our AWG product is designed to support 5G and 6G networks, and suitable for use in various settings, with industrial temperature support and high-power capabilities. Our silica-on-silicon Planar Lightwave Circuit DWDM Mux/Demux AWG chips and modules support 50, 100, and 200 GHz, point-to-point WDM optical links for long haul/5G mobile front haul networks. Our AWG product ensures your network operates at peak performance, with fast and reliable data transmission, even in harsh industrial environments.



LAMBDA GLASS SOLUTIONS GMBH & CO.KG

C206

3D Quartz Glass Fiber Ferrules

Our 3D quartz glass fiber ferrules are engineered for ultra-precise fiber positioning and robust optical performance. Manufactured from high-purity fused silica, they offer exceptional thermal stability, chemical resistance, and minimal optical loss. The advanced 3D-structured geometry ensures accurate alignment, reliable bonding interfaces, and compatibility with complex photonic and microfluidic assemblies. Ideal for high-density coupling, precision sensing, and demanding semiconductor applications.



SHAOXING BEECON CONNECTIVITY TECHNOLOGY CO., LTD.

A012

16F MPO Ferrule

Single mode or multi-mode, common loss or low loss are available. High-precision molding, low-loss output. High mechanical strength, low ferrule weight. High-precision PIN pinholes, low concentricity. Resistant to high temperature, corrosion and flame, with good environmental stability. The mold markings can indicate the fiber type and ferrule grade.



Passive Device

SHENZHEN TONGXIN OPTICAL COMMUNICATION TECHNOLOGY CO., LTD

A116

PLC Splitter Module

1x2 1x4 1x8 1x16 1x32 1x64 single mode APC UPC steel tube fiber optical with without connector mini beam PLC splitter



SHENZHEN LUCENTFIBER OPTICAL TECHNOLOGY CO., LTD

A808-2

PLC Splitter

PLC Splitter is a core passive component in FTTx networks. Based on quartz glass waveguide technology, it features low loss and wide wavelength compatibility. PLC splitter achieves optical signal distribution and combining through cascading of the basic 1x2/1x3/1x4/1x6/1x8/1x12/1x16/1x32/1x64 structure. We are good at producing the high quality PLC splitters in PIPE, AB5, cassette, LGX and 1U chassis. Average LT is about 10 days for 3K pieces.



QINGDAO SUNET TECHNOLOGIES CO., LTD

A601

PLC Splitter

Planar waveguide light optical distributor (PLC Splitter), is a kind of planar waveguide integrated optical device, it can be 1260nm ~ 1650nm such a wide range of wavelengths of light power reservation in realization, the distribution of wavelength range covers EPON technology used 1310nm, 1490nm and 1550nm three wavelengths. Especially suitable for EPON Ethernet passive optical network access technology FTTP fiber network system, broadband passive optical distributor (POS) use. All our products comply with the international quality standard and are greatly appreciated in a variety of different markets throughout the world!



CHAIN STEV INDUSTRY CO.,LIMITED

A501

Fiber PLC Splitter

PLC optical splitter is an optical power management device manufactured using silica optical waveguide technology. It boasts features such as compact size, high reliability, a wide operating wavelength range, and excellent channel-to-channel uniformity, and is widely used in PON networks to split optical signal power. It divides fiber bundles into multiple sub-bundles at a specified splitting ratio, serving as a key passive component in passive optical networks. All products comply with the requirements of GR-1209-CORE-2001 and GR-1221-CORE-1999.



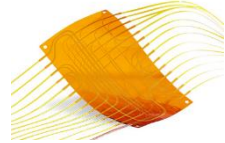
Passive Device

T&S COMMUNICATIONS CO., LTD.

B202, B201

Fiber Optic Flex Circuit (FOFC)

The Fiber Optic Flex Circuit (FOFC) addresses the need for effective cable management, enabling optimal airflow and efficient routing within communication systems. It provides a streamlined solution for routing fiber from board-to-board, shelf-to-shelf, or within narrow and irregular spaces, ensuring organized and compact fiber pathways.

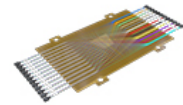


SHENZHEN ADTEK TECHNOLOGY CO., LTD

A111

Adtek Optical Fiber Flex Circuit

Adtek Optical Fiber Flex Circuit with thin film structure is a type of Fiber Shuffle, and it's also an innovative solution for card-to-card, shelf-to-shelf, and confined space cabling, that achieve optical cross-connect on flame-retardant substrate with integrated connection. On the one hand, a flexible backplane can realize thousands of optical fiber cross-interconnection, which not only has the advantages of simplifying optical fiber wiring management, flexible vibration resistance, etc., but also greatly saves wiring space; On the other hand, users don't need to manually jump fibers, but only need to pay attention to the uplink and downlink interfaces.



XIAMEN BELY INFORMATION TECHNOLOGY CO., LTD

A634

Passive Components: PWDW, PLC, Coupler, TAP, MUX

Belycomm Passive components are engineered for seamless integration and optimal performance in dense wavelength division multiplexing applications, delivering precision and versatility that surpasses industry expectations.

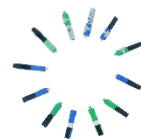


BENGBU HUAXING ELECTRONIC NETWORK CO.,LTD

A624

Fiber Optic Quick Connector

A Fiber Optic Quick Connector, commonly known as a Field Assembly Connector, is a revolutionary solution for fiber optic termination. Its core design purpose is to enable rapid and simple fiber connection and termination at the installation site, without the need for fusion splicers or complex epoxy curing processes. Key Features: 1. Rapid Installation 2. Ease of Operation 3. High Cost-Effectiveness 4. Stable and Reliable Performance 5. Flexibility and Portability In summary, with its efficiency, convenience, and economy, the Fiber Optic Quick Connector has become an indispensable component in modern optical fiber access networks.



WDM

**SHENZHEN ISEELINK
COMMUNICATION CO.,LTD.**

A115

**OSP3800 CWDM/DWDM Wavelength
Division Transmission Equipment**

The OSP3800 is a high-capacity CWDM/DWDM integrated transmission platform supporting 1.25G/10G/25G/100G/200G/400G. Available in 1RU/2RU/3RU/5RU chassis, it integrates EDFA/RFA/OLP/OADM/MUX&DEMUX/AAWG/VOA/OTU boards, offering rich management and protection functions. It can provide operators with end-to-end OTN/CWDM/DWDM backbone transmission solutions, enabling high-capacity scheduling and ultra-wideband intelligent transmission. It is primarily used for backbone lines, metropolitan area networks, and data center interconnection transmission.

**GUANGZHOU VISINT COMMUNICATION
TECHNOLOGY CO., LTD**

A104

Vispace1000 DCI BOX

DCI BOX is a white-brand WDM transport product suitable for telecom operators, government and enterprise networks, and private 5G networks. DCI BOX can expand existing network capacity by adding 100G/200G/400G wavelength channels without replacing existing OTN/DWDM infrastructure, making it a cost-effective upgrade solution. It provides the flexibility to seamlessly integrate different vendors' hardware on the same network, resulting in a vendor-neutral Open Line System solution.

**FLYIN GROUP CO., LTD**

A213, A214

WDM

WDM, or Wavelength Division Multiplexing, boasts several key advantages in the market. It significantly increases fiber transmission capacity and efficiency by combining multiple wavelengths of light into a single fiber. It offers cost savings, high reliability, and flexibility. WDM supports diverse network services, enables ultra-long-distance transmission, and facilitates seamless upgrades and expansions, making it a cornerstone of modern optical communication networks.

**SHENZHEN LUCENTFIBER OPTICAL
TECHNOLOGY CO., LTD**

A808-2

**FWDM / CWDM /
DWDM MUX DEMUX**

FWDM, CWDM, DWDM multiplexers are a low-cost WDM transmission technology for the metropolitan area network (MAN). It transmits by multiplexing different wavelengths to one single fiber. They are widely used in front-haul deployment. The technology has low requirements on the laser and effectively reduces the network operation cost and improve the system reliability. There are Pipe, ABS, LGX, Cassette and 1U chassis types. Wavelengths, logo and packages can be customized. Lucentfiber is one of the best producers of mux demux in the market. You can find high quality products with good quality, price and lead time here.



ONU and Router

HUNAN ZIKUN INFORMATION TECHNOLOGY CO., LTD.

A622

ZC-521X6D(ONU)

ZIKUN ZC-521X6D is a dual-mode (XPON) Gigabit WiFi6 ONU that supports automatic switching between GPON and EPON modes. It provides 4 Gigabit Ethernet ports and concurrent dual-band wireless 11n 2.4GHz (2x2) and 11ax 5GHz (2x2). It focuses on high-speed wireless connection and Mesh networking functions. Its wireless rate reaches 3000Mbps, supports 160MHz bandwidth and concurrent transmission of multiple devices, and is compatible with Wi-Fi 6 technical standards.



XINDATONG

A806

XGSPON
2.5GE+4GE+AX3000+
CATV+POTs+2USB ONU

Network interconnection connects LANs and WANs, enabling data interoperability between different networks. Data forwarding selects the optimal path based on the destination address and quickly transmits data packets. Multi-device sharing allows multiple terminals (mobile phones, computers, smart devices, etc.) to access the same network simultaneously. Network management supports basic network configuration functions such as IP allocation, port mapping, and flow control. It offers wide compatibility, supporting multiple connection methods such as wired (Ethernet) and wireless (Wi-Fi), meeting the network needs of various scenarios, including homes, offices, and small computer rooms. Mesh networking allows for on-demand expansion of storage and network



HUNAN ZIKUN INFORMATION TECHNOLOGY CO., LTD.

A622

ZC-R560(Router)

ZC-R560 is a AX3000 Wi-Fi6 router, which has the characteristics of fast speed, low delay, large capacity, safer and more power saving. The wireless 2.4G rate is as high as 576Mbps, 5G rate is as high as 2400Mbps, and the dual band wireless concurrency rate is as high as 3000Mbps. In today's high-density and crowded network environment, the delay in games, education and live broadcasting is lower and the experience is smoother.



XINDATONG

A806

AX3000 Router 2.5GE WAN+4GE
LAN+AX3000 WiFi6 +Mesh R5

Network interconnection connects LANs and WANs (such as broadband), enabling data transfer between different networks. Data forwarding selects the optimal path based on the destination address, rapidly transmitting data packets. Multi-device sharing allows multiple devices (mobile phones, computers, smart devices, etc.) to access the same network simultaneously. Network management supports basic network configuration functions such as IP allocation, port mapping, and traffic control. Broad compatibility supports multiple connection methods, including wired (Ethernet) and wireless (Wi-Fi), adapting to a variety of devices. It can meet the network needs of various scenarios, including homes, offices, and small computer rooms. Easy to expand.



Patch Cord

SHENZHEN TONGXIN OPTICAL COMMUNICATION TECHNOLOGY CO., LTD

A116

MPO/MTP Fanout Patch Cord

MPO Fanout Hybrid Patch Cord is mainly used to connect QSFP and SFP modules, or MPO and the LC connectors. Normally OD of the fanout cables is 2.0mm.



QINGYUAN CYS COMMUNICATION CO.,LTD

A202

Optical Patchcords With MPO Push-pull Boot Connectors

This MPO Push-pull patchcords used own designed MPO connectors are easier insertion and extraction in ultra-high density applications. It has the advantage of stable transmission, high reliability and customization. It is widely used in optical network scenarios such as Backbone Network, ODF and Data Center etc.



BENGBU HUAXING ELECTRONIC NETWORK CO.,LTD

A624

Fiber Optic Patch Cable

Fiber optic patch cables, also known as fiber jumper cables, are cables terminated with connectors on both ends, designed for quick and flexible connections between equipment and patch panels. Their key characteristics include: 1. High Efficiency & Low Insertion Loss 2. High Reliability & Stability 3. Flexibility & Convenience 4. Diverse Variety 5. Superior Performance of APC Connectors. In summary, the fiber optic patch cable is an indispensable passive component in optical networks. It ensures the efficiency and stability of optical communication links through its low loss, high reliability, and flexible connectivity.



PUYANG YRT COMMUNICATIONS TECH CO., LTD.

A631, A632

Fiber Optical Patch Cords

OM3: Effective modal bandwidth (EMB) ≥ 2000 MHz·km, supporting 10Gb/s transmission to 300 meters, 40Gb/s to 150 meters, and 100Gb/s to 100 meters. OM4: EMB ≥ 4700 MHz·km, supports 10Gb/s to 550 meters, 40Gb/s to 400 meters, 100Gb/s to 150 meters, with better performance. Laser Optimized Multimode Fiber (LOMMF): Optimized for VCSEL laser light sources, reducing modal dispersion (DMD).

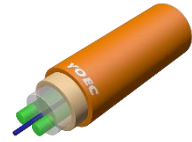


CHANG YING TONG

D212

Ultra-Fine Diameter Panda Polarization-maintaining Fiber

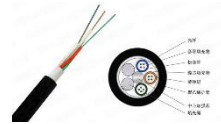
Ultra-Fine diameter panda polarization-maintaining optical fiber for fiber optic gyro coil is primarily aimed at the high-precision, miniaturization, and cost-effectiveness requirements of fiber optic gyros. It provides 40-micrometer and 50-micrometer diameter polarization-maintaining fiber to meet the winding requirements of various small-sized coils. Specifically, the 50/80 size series of polarization-maintaining optical fibers are compatible with mainstream fusion splicing equipment and can be seamlessly connected with 60/100 waveguide fibers.

**ANHUI XINMAI OPTOELECTRONICS TECHNOLOGY CO., LTD**

A008, A009

GYFTZY

The product has good mechanical properties and temperature characteristics, the loose casing material itself has good hydrolysis resistance and high strength, a single steel wire as a longitudinal central strength member

**JIANGSU TONGGUANG OPTICAL FIBER CABLE CO., LTD.**

A523

ADSS

TGC ADSS has high tensile strength. Under the condition of the same tensile strength, the outer diameter of the TGC ADSS optical cable is smaller, but the remaining length can still be controlled within 0.8% - 0.9%. At the same time, it has a relatively light weight, which can reduce the influence of ice and wind. TGC ADSS cable is produced by vacuum-sealing the outer sheath through extrusion. This process ensures that the cable core remains in the center position, guarantees the roundness of the cable and the uniformity of the sheath, and ensures the service life.

**HUIZHOU C-FLINK TECHNOLOGY CO.,LTD**

A103

1.6T OSFP224 ACC

Compliant with InfiniBand XDR and IEEE802.3dj specification requirement 8x200G-PM4 to 8x200G-PM4 Provide excellent mechanical durability and shielding, reduce crosstalk, transmission distance up to 3 meters; Compliant with hot-pluggable OSFP MSA standard Operating temperature: 0°C-70°C



Distribution Box/Patch Panel

QINGTIAN YOOHON TECHNOLOGY CO., LTD

A604

Fiber Optic Network Cabinet

The network cabinet is made of cold rolled steel sheet, with exquisite design, precise dimension and craftsmanship. It has lockable door, fully adjustable vertical mounting rails, and swiveling wheels. The color, height, width and depth can be customized, with full range of optional accessories. It has good compatibility and perfect ventilation. It complies with IEC 62321-2 standard. It has been sold to various countries in the world.

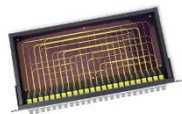


T&S COMMUNICATIONS CO., LTD.

B202, B201

**1U High Density
Fiber Optic Enclosure**

The T&S Ultra Series 1U Rack Mount Fiber Enclosure is designed to house up to four Ultra Family module cassettes or fiber adapter panels, providing a flexible and modular solution for diverse fiber optic patching and termination needs. The series' great interchangeability ensures easy and smooth upgrading, making it an ideal choice for backbone cabling, distribution, or cross-connect applications in both main and horizontal distribution areas.



QINGDAO SUNET TECHNOLOGIES CO., LTD

A601

FTTH Box

FTTH Box is used as a termination point for the feeder cable to connect with drop cable in FTTx network system. It integrates fiber splicing, splitting, distribution, storage and cable connection in one solid protection box. Water-proof design with IP-66 Protection level. Integrated with splice cassette and cable management rods. Manage fibers in a reasonable fiber radius condition. Easy to maintain and extend the capacity. Suitable for the fusion splice or mechanical splice. PLC Splitter can be installed as an option. Efficient cable management.



SHENZHEN ADTEK TECHNOLOGY CO., LTD

A111

ADTEK Fiber Patch Panel_GPX70

It is precisely for these next-generation UHD data centers that we have engineered our groundbreaking modular patch panel, designed to deliver unparalleled performance and flexibility with an impressive capacity of up to 72 connections per RU. This modular patch panel is ideal for optical fiber backbone connection and distribution management in data centers. It seamlessly integrates into the Main Distribution Area (MDA), Intermediate Distribution Area (IDA), or Horizontal Distribution Area (HDA), enabling optimal interconnection and cross-connection between backbone optical cables and active devices. You can go beyond fixed configurations with the flexibility to mix and match modules.



Fusion Splicer/Cutting Machine

**TIAN JIN ELOIK COMMUNICATION
EQUIPMENT TECHNOLOGY CO., LTD.**

A611

IoT-enabled Fusion Splicer

1. Centrally manage all devices under your account 2. Accurately locate the machine 3. Track Machine Movement History 4. Remote Lock/Unlock Function 5. Equipment Alarm Data Statistics 6. Remote access to splicing history, cleave angle and splice loss. 7. Splicing quality analysis



**ANHUI FIBERLINK COMMUNICATION
EQUIPMENT CO.,LTD**

A808-8

**Fully Automatic Polarization-
Maintaining Fiber Fusion Splicer**

Fully automatic PM fiber splicers deliver fast, precision alignment of polarization axes, ensuring ultra-low loss and high extinction ratio. They simplify complex splicing, boost reliability, and enhance efficiency in sensing and specialty fiber applications.



SHENZHEN FTTX TECHNOLOGY CO.,LTD

A114

Fiber Optic Fusion Splicer

6-motor fiber core alignment fusion splicer combines performance, quality, price, and service advantages with cost-effectiveness. It can truly achieve visible fiber cores, fiber core alignment, automatic fiber recognition, low loss, and high stability. Our products have received unanimous recognition and praise from customers around the world. We also hope that our fusion splicer can help customers work better and create more value for them, providing them with an efficient and enjoyable work experience.



**BENGBU TENGYUE COMMUNICATION
EQUIPMENT CO.,LTD**

A808-9

Fiber Optic Cutting Machine

Used for fiber optic core cutting adhesive, suitable for MT, LC, SC, SN



ZHENGZHOU YUENENG OPTOELECTRONIC TECHNOLOGY CO., LTD

C001

Cesium Lithium Borate Crystal

CLBO ($\text{CsLiB}_6\text{O}_{10}$) is a nonlinear optical crystal renowned for its high laser damage threshold and wide transparency range down to the deep ultraviolet (180 nm). Its key advantages include effective frequency conversion (especially for Nd:YAG harmonics), moderate nonlinear coefficient, good chemical stability, and non-hygroscopic nature, making it a reliable choice for high-power UV laser applications.

**ZHENGZHOU YUENENG OPTOELECTRONIC TECHNOLOGY CO., LTD**

C001

Rubidium Titanyl Phosphate Crystal

RTP (RbTiOPO_4) is an excellent electro-optic crystal. Its key features include a high electro-optic coefficient, high laser damage threshold (exceeding 800 MW/cm^2), and the capability for high-repetition-frequency operation (up to hundreds of kHz) without piezoelectric ringing. It also offers low half-wave voltage, wide transmission range, low insertion loss, and is non-hygroscopic. These advantages make it an ideal material for electro-optic Q-switches and modulators in advanced laser systems.

**TIEWAY INC.**

D106

Gold Quartz Crystals

Gold quartz crystals, with low contact resistance, very high chemical stability and easy to deposit, are widely used for low-stress metal depositions such as gold, silver and copper.

**TIEWAY INC.**

D106

Alloy Quartz Crystal

Alloy quartz crystals are widely used for high-stress material depositions including Oxidation Silicon, Magnesium Fluoride, Titanium Oxide and Aluminium Oxide. High-stress materials often cause erratic crystal performance produced by high tensile or compressive stresses through the coating process. And alloy can effectively dissipate the stress which results in a much more stable crystal.



Lens

EDMUND OPTICS SINGAPORE PTE LTD

B303

Imaging Lenses

Imaging Lenses are used to view objects in imaging systems. Imaging Lenses are imaging components used in imaging systems to focus an image of an examined object onto a camera sensor. Depending on the lens, Imaging Lenses can be used to remove parallax or perspective error or provide adjustable magnifications, field of views, or focal lengths. Imaging Lenses allow an object to be viewed in several ways to illustrate certain features or characteristics that may be desirable in certain applications.

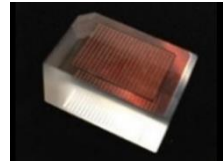


AGC ASIA PACIFIC PTE LTD

A334

Glass Molded Microlens Array

Diameter max.: 15mm x 20mm Diameter Tolerance: $\pm 0.1\text{mm}$ Cell Size: $0.65\text{mm} \times 0.65\text{mm} \sim 1.5\text{mm} \times 2\text{mm}$ Cell-pitch Accuracy: $\pm 0.005\text{mm}$ Surface Accuracy: PV $1\mu\text{m}$ Surface Roughness: Ra 20nm Centration between R1 and R2: $10\mu\text{m}$



ECOPTIK(CHANGCHUN)LTD

B234

Micro Lens

ECOPTIK can customize high-precision micro lenses with diameters ranging from 0.3mm to 5mm , using materials in the ultraviolet, visible, and infrared bands. Micro lenses empower medical devices with miniaturization, reconstruct optical communication with precision optics, and revolutionize imaging systems with aberration control, continuously pushing the boundaries of high-precision optical technology in the fields of life sciences, information transmission, and visual interaction.



TECNOTTICA CONSONNI SRL

C205

Custom Spherical and Aspherical Lenses

Manufacturing of custom coated and uncoated spherical lenses from dia. 3 mm up to dia. 350 mm made of optical glasses, fused silica or UV/IR materials. We manufacture our lenses with the most modern CNC technologies available on the market and our laboratories are fully equipped with the latest metrology systems ($4''$ and $6''$ interferometers and Luphoscan 420). Thanks to our metrology department located beside our production area, we are capable to offer to our customers the maintaining of the highest optical standards for the most demanding optical applications.



Lens

DXS OPTICS LTD

C331

Aspheric Lenses

An aspheric lens varies continuously in its curvature from center to edge, and the radius of curvature varies with the central axis to improve the optical quality, which helps to minimize the number of optical lenses in optical accessories and reduce the production cost of the optical lenses. Aspheric lenses have unique advantages over spherical lenses and have great advantages in correcting spherical aberration. Therefore, aspheric lenses are widely used in optical instruments, focusing imaging and optoelectronics industry.

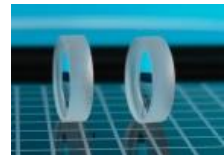


CHANGCHUN YUTAI OPTICS CO.,LTD

B221

Optical Spherical Singlet Lenses

Optical lenses are optical components designed to focus or diverge light. Many industries utilize optical lenses, including life sciences, imaging, industrial and defense. As light passes through a lens, it is affected by the lens' profile or substrate. Yutai Optics offers a wide range of Optical Lenses in a variety of substrates or coating options. Substrates include optical glasses, fused silica, plastic and IR material.



CHANGCHUN ZHIRAN OPTOELECTRONICS TECHNOLOGY CO.,LTD

B133

Wide Band Deep Ultraviolet Objective Lens

Broad-band DUV lens with a spectral range $266\text{nm} \pm 15\text{nm}$ with LED or Hg lamp illumination. It features a large numerical aperture (NA), long working distance, achromatism and high transmittance, and is suitable for wafer defect inspection, mask inspection, LED panel inspection, semiconductor packaging and other fields.

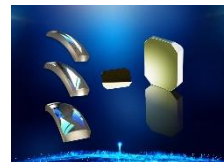


Optical Components: Cylindrical Lenses, Spherical Lenses, Toric Lense, Prisms, Windows, , Mirrors, Filters and so on.

CHANGCHUN GLITTER OPTICS CO.,LTD

B132

Glitter has variety of lens production lines and testing instruments. Our main products are cylindrical lens, spherical lens, window, mirror, prism, toric lens, aspherical lens and so on. The materials can be all kinds of optical glass and crystal, from deep UV to IR. These equipment are imported from Japan, Korea and other countries. The coating machines are Oporun (Japan) and Hanil (Korea). The main testing instruments include ZYGO interferometer with CGH, Japan made transmission/reflection eccentric instrument, Shimadzu spectrometer and other testing equipment.



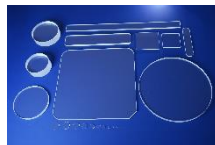
Window/Filter

DONGGUAN ZHENJING OPTICAL TECHNOLOGY CO.,LTD

D035, D036

Sapphire Windows

It can be widely used in the fields of infrared and ultraviolet aerospace instruments, blast furnace temperature measurement, solar cell, watch, infrared military devices, scientific research, civil industry and high intensity laser and the other application.



CLZ OPTICAL CO.,LTD

B222, B223

Optical Windows

Optical Window is an optical element with two parallel surfaces. It is often used as a protective window for optical equipment, electronic sensors, or detectors of the external environment. The optical window doesn't change the optical magnification, it only affects the optical path. The selection of materials is generally determined by the base material's mechanical properties and the material's transmittance. Common optical window base materials H-K9LN-BK7, B270, borate glass, UV Fused Silica, and infrared fused silica. Some windows will be coated on one side of the window depending on the wavelength used.



SHENZHEN NANO MACRO OPTICS CO.,LTD

C003

Narrow Bandpass Filter

Nano Macro Optics employs advanced ion-assisted deposition (IAD) coating technology to manufacture narrowband filters, which feature high transmittance and deep cut-off depth.



YANTAI JIEMIAN

C531

Quartz Laser Cavity Filter Multi-Hole Laser Flow Tube

We can produce different size of laser cavity filter according to customer's requirement, single hole, double holes and triple holes. Based on the different application and other required properties, available materials are as below: ■ Borosilicate glass ■ Synthetic fused silica ■ Fused quartz ■ Cerium doped quartz ■ Europium doped quartz ■ Ti doped quartz ■ Samarium doped glass The laser cavity filter is one of the components for laser, and is widely used in the development of high power laser industry.



Mirror/Prism

BLUE RESOURCE OPTICS (CHENGDU) CO.,LTD.

C101, C102

Laser Scanner Mirror

This laser scanner mirror, with "broad adaptability, high consistency, stable mass production" as core advantages, excels in the laser equipment supporting market. It fits laser marking, lidar, 3D scanning, etc., breaks single-scenario limits. Standardized production ensures uniform key parameters, cutting debugging costs. Mature mass production guarantees stable supply, shortening delivery cycles. It offers differentiated advantages, a preferred partner for manufacturers.



XI'AN SNP PRECISION OPTICS CO.,LTD

C303

Super High Reflective Mirrors

Product name: fused silica/ule plane mirror Material: fused Silica, ULE Incidence Angle: 0°/45° (Customize) Reflectivity: 99.9%-99.9995% (Customize) Back transmission: customize Diameter tolerance: +0.0/-0.1 Thickness tolerance: ±0.5 Parallelism difference: 10" Surface Accuracy: $\lambda/10$ @632.8nm Defect: 10-5 Chamfer of edge: 0.2~0.5×45° Wavelength: Single wavelength, multi-wavelength, broadband (Customize) Roughness: Ra0.1nm (Zygo contourgraph) test area 173*173um full frequency measurement Size, wavelength, incidence angle, reflectivity, transmission can be customized



HONGCHENG

D114

Various Customized Prisms

We support customization based on customer-provided drawings and can produce high-precision optical components according to customer needs



PWT OPTICS

C232

Prism

Angle tolerance: +/-5" Surface quality: 1/10L



Automotive/Medical Optics

FUJIAN FRAN OPTICS CO.,LTD

D223

Lidar Optical Parts

The high-precision lidar optical parts developed by Fran Optics 7 with severe environmental requirements all day, effectively avoid the reduction of signal-to-noise ratio of lidar system, and improving the accuracy of lidar system in detecting and identifying objects. They are widely used in robots, automobiles, industrial detection equipment, etc.

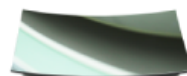


FUJIAN FRAN OPTICS CO.,LTD

D223

High-precision HUD Mirror

HUD free-form mirror developed by Fran Optics uses industry-leading micro-nano processing technology and advanced coating technology to correct the image distortion caused by the windshield, thereby ensuring that the image is not distorted. AR-HUD free-form mirror with higher precision and larger size not only has a larger viewing angle, but also realizes the perfect coincidence of the real environment and virtual information.

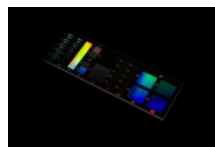


IMT MASKEN UND TEILUNGEN AG

C202

LifeScience & Diagnostics

Microfluidic-Multifunction-MEMS with Fluorescence pattern, channels, waveguides, calibration slide with nano-structured-patterning



NANJING LINGYINGCHUANG OPTOELECTRONIC TECHNOLOGY CO.,LTD

C234

Medical Endoscope Lens

Exquisite craftsmanship: Utilizing internationally leading processing technology and rigorous quality control procedures to ensure superior performance of the product. Customized services: Provide personalized design and manufacturing solutions based on customer needs, meeting the requirements of different application scenarios. Technological innovation: Continuously invest in research and development to drive innovation and advancement in endoscope lens technology. Quality service: Providing customers with comprehensive support, from product design to after-sales service.



AR/VR Optics and Optical Design Software

HONGSHI

D326

Aurora Blink XC6

Aurora Blink XC6, a core part of Hongshi's colorization strategy, is a trichromatic-combining full-color MicroLED micro display engine. It leverages a trichromatic light-combining scheme, precisely blending light from red (R), green (G), blue (B) monochrome MicroLED chips to render full-color visuals. It delivers 2,000,000 nits red luminance (the highest among monochrome products with pixel pitch $\leq 4\mu\text{m}$), paired with 0.12-inch size and 640×480 resolution. Boasting low power consumption and excellent imaging, it's already in the industry's top tier, expanding MicroLED's application scenarios.



HONGSHI

D326

Aurora A6

Aurora A6, Hongshi's 4-year R&D silicon-based MicroLED chip, adopts an 8-inch Wafer-level silicon substrate. Integrated with self-developed quantum dot conversion tech, it boasts process maturity enabling stable mass production. Boasting 8,000,000 nits, this 0.12-inch green chip features 640×480 resolution, 6800 PPI, uniform image quality and low power consumption, fitting high-brightness scenarios like AR glasses.

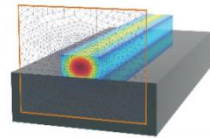


ADVINNO TECHNOLOGIES PTE LTD

B531

Zemax

Ansys Zemax OpticStudio® is the leading optical design software for developing, analyzing, and optimizing optical systems across industries such as aerospace, consumer electronics, and healthcare. It features tools like ray and wavefront analysis, physical optics propagation, and tolerance evaluation. Unlike other software, OpticStudio integrates advanced Multiphysics analysis (e.g., structural and thermal impacts), API automation, and comprehensive libraries of optical materials and commercial lenses. Its capabilities accelerate time-to-market, reduce prototyping costs, and ensure high-accuracy designs. With robust optimization tools and versatile configurations, it empowers engineers to create innovative solutions from simple lenses to complex Photonic systems.

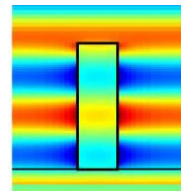


ADVINNO TECHNOLOGIES PTE LTD

B531

Lumerical & SPEOS

Ansys Lumerical and Ansys Speos combine cutting-edge photonic and optical simulation capabilities to empower engineers in designing innovative, high-performance systems. Lumerical excels in simulating optical and optoelectronic systems with advanced multi-physics modeling and quantum photonics tools, while Speos specializes in physics-based ray tracing for accurate lighting and optical system validation. Together, they address diverse applications, from photonic integrated circuits and meta surfaces to advanced lighting in automotive and aerospace industries. Seamlessly integrating with CAD environments and offering robust material libraries, these tools reduce prototyping costs, enhance design accuracy, and accelerate time-to-market, ensuring exceptional innovation in photonics and optical systems.



MITUTOYO ASIA PACIFIC PTE LTD

A323

Objective Lens (UV to Visible to IR)

Mitutoyo Optical's strength lies in its concentration of optical technologies, which is evident in the many achievements it has made in the industrial world, including measuring microscopes, image measuring machines, electronic semiconductor and liquid crystal related equipment, and visual inspection and various analytical equipment. FEATURE 01 Supports a wide range of optical wavelengths from ultraviolet to visible to near infrared FEATURE 02 World-class long working distance is the industry standard FEATURE 03 Transmission characteristics can be changed according to customer needs

**CHANGCHUN BOXIN PHOTOELECTRIC CO., LTD**

B232, B233

Lens Assembly

Changchun Boxin continuous zoom lens has a wide range of focal length and coverage. At present, there are a series of products such as 24 ~ 120mm, 10 ~ 150mm, 10 ~ 300mm, 18 ~ 500mm, 14 ~ 800mm, 20 ~ 1200mm, 32 ~ 1500mm, 200 ~ 2000mm, 500 ~ 2500mm, etc. In the field of telephoto lens, there are products suitable for almost all the focal lengths required.

**JIANGXI TRACE OPTICAL CO., LTD**

D026

TRC-F1007

The large-aperture 4K lens is designed for high-end dash cams and is paired with the IMX678 sensor. It is configured with an F1.70 aperture, 4K resolution, and a 140° wide-angle field of view, and is positioned as a flagship product in the dash cam vision industry.

**JIANGXI TRACE OPTICAL CO., LTD**

D026

TRC-20805

The distortion-free wide-angle lens is designed for video conferencing systems and is paired with the IMX415 sensor. It is configured with 8-megapixel resolution and a 110° HFOV, enabling a distortion-free effect in wide-angle scenarios, and is widely recognized by consumers.



OPTOTECH OPTIKMASCHINEN GMBH

A126

SM 80 CNC-TC

3-Axis CNC-controlled generator for pre- and fine grinding of spheres and aspheres up to diameter 80mm. 3 spindles (1x workpiece spindle and 2x tool spindles). Pre- and fine grinding with cup grinding tools as well as edge processing and chamfering with form wheels. Fully automated processing possible with RPL 80 robot handling option.

**OPTOTECH OPTIKMASCHINEN GMBH**

A126

RPL 80

RPL 80 is the high performance robot solution from OptoTech that allows automatic loading and unloading of the SM 80 CNC-TC generator, the SPK 80 CNC polisher and the OWI 60 HP Invers-A interferometer. The RPL 80 can handle single surfaces up to diameter 80mm as well as lenses on cementing pieces. The RPL 80 is equipped with a high-performance 6-Axis Kuka robot with state-of-the-art safety functions to ensure safest operation.

**SATISLOH ASIA**

D101

**SPM-200/SPS-200
Grinding & Polishing**

The SPM-200 precision optics grinding machine covers a wide workpiece range from 5–200 Ø in mm. The unique dual-spindle technology and axis design enables superior speed and consistent processing of spheres, aspheres, & freeform surface. The SPS-200 precision optics polisher processes spheres, aspheres, and freeform surfaces within a working range of 5–200 mm, but also a wide spectrum of other optical surfaces such as cylinders, toroids, and more.

**SATISLOH ASIA**

D101

C-300 Centering

The C-300 high precision 7-axis centering machine processes various geometries including non-circular shapes and a wide range of diameters of 10–300 mm. The first centering machine to combine force-controlled grinding and full flexibility of CNC technology, paving the way for highest speed and best surface quality.

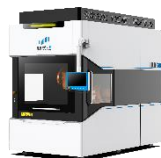


**SICHUAN GREENWICH
OPTOELECTRONIC TECHNOLOGY CO., LTD**

C104

**Intelligent Robot
Polishing Equipment**

Our intelligent robot polishing equipment is designed to handle lenses of varying sizes and precision requirements. We specialize in ultra-precision processing of optical components, including off-axis aspheric, cylindrical, free-form, and other complex surface types. A wide range of materials is supported, such as quartz, ULE, microcrystalline glass, silicon, SiC, sapphire, metals, and ceramics – including large-diameter and specially shaped lenses. Standard models include the IRB300, IRB600, IRB1000, and IRB1500. We also offer customized ultra-large-aperture processing equipment, currently capable of handling lenses up to 4 meters in diameter. we can achieve surface accuracy up to $\text{RMS } \lambda/100$.


CHANGSHA AFISY TECHNOLOGIES CO., LTD

D222

**CCOS Polishing
Machine For Precision Optics**

Six axis linkage Double rotor polishing head Intelligent positioning of workpieces Deterministic polishing to achieve high-efficient and high-quality precision optical processing Machinable Surfaces: Plane, spherical, aspheric, off-axis aspheric, cylindrical, free form surfaces, etc. Machinable Materials: Quartz, zerodur, ULE, K9, sapphire, single crystal silicon, silicon carbide, ZnS, etc. Machining Features: Deterministic CNC polishing


**GUANGDONG KINGDING
OPTICAL TECHNOLOGY CO., LTD**

D111

**Freeform Surfaces (HUD) Precision
Molding Machine MD12-180×120**

The device is suitable for the mass production of high-precision glass free-form surface molding. The material is placed in the mold and then placed into the press chamber. It will be heated, pressed, cooled, and then removed in order. The production process is efficient, ensuring steady quality.


CHANGZHOU KUAILE TECHNOLOGY CO., LTD.

D234

KLDJ205Q

KLDJ205Q is a desktop cutting machine designed for the optical industry, which has the advantages of small size, quietness, and complete and smooth cutting surface



MOVEON TECHNOLOGIES PTE LTD

B332

Automotive Optics & Component Fabrication

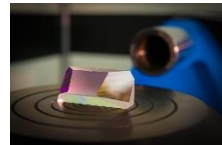
Moveon leverages its in-house fabrication processes to manufacture high-quality optical components for automotive applications. Our expertise includes LiDAR sensors, heads-up displays (HUDs), and welcome-light projection systems, among others. These advanced optical solutions enhance vehicle safety, navigation, and driver experience. With a strong commitment to quality and environmental responsibility, we are proud to be ISO 9001, ISO 14001, and IATF 16949 certified, ensuring compliance with global automotive industry standards. Our rigorous quality control processes and innovative approach allow us to deliver precise, reliable, and high-performance optical solutions tailored to the evolving needs of the automotive sector.

**UAB ALTECHNA**

C214

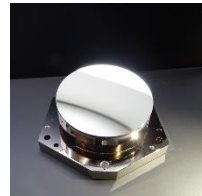
Optics & Optical Designs

Altechna products are designed and optimized for long-lifetime, high-power laser systems operating in the 193 nm to 3 μ m wavelength range. Our expertise in custom optical designs and high-damage-threshold coatings, combined with rigorous metrology, ensures precision, reliability, and repeatability from prototype to mass production.

**Design And Manufacturing Of Optical (Sub)systems And Components For Space And Semicon****TNO SCIENCE AND INDUSTRY**

C204

Central to the functionality of numerous scientific instruments are optical components. Encompassing spectrometric and imaging optics vital for diverse applications such as scientific research, astronomy, lithography, and space exploration. TNO Optics Manufacturing stands as a prominent expertise center specializing in the manufacturing and qualification of intricate optical components and coatings.

**CHANGCHUN AOYI TECHNOLOGY CO., LTD**

B135

Optical Centering and Assembly Service For Lenses

Centering Turning and Centering Assembly are used for the high-precision assembly of coaxial lens barrels. Centering turning is a secondary machining process for lens mounts. Its principle involves mounting a centering instrument on a high-precision lathe, adjusting the fixture to align the optical axis of the lens with the machine spindle, and then machining the mount accordingly. This process ensures superior coaxiality between the lens and barrel, significantly improving assembly accuracy.

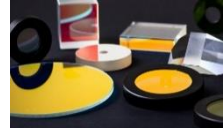


OPTO PRECISION PTE LTD

B533

Advanced Coating Services

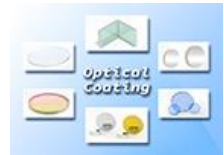
Our advanced optical coating services provide precise control over reflection, transmission, and durability, utilizing high-performance thin film coaters to create customized optical coatings such as dielectric, metallic, AR, beamsplitter, and filter coatings to enhance optical performance across the UV, visible, and IR spectrum; with state-of-the-art deposition systems, tight process and quality control, we ensure consistent coating uniformity, adhesion, and surface quality. Our engineering team collaborates closely with customers to optimize coating design for wavelength range, angle of incidence, and environmental requirements, enabling reliable performance in imaging, sensing, medical diagnostics, aerospace, semiconductor, and defense applications.

**CHANGCHUN BOXIN PHOTOELECTRIC CO., LTD**

B232, B233

Optical Coating

Boxin owns coating workshop, we supply design and manufacture High-Performance thin films service to our customers, includes the anti-reflection thin film, Semi-Reflective thin film, High-Reflective thin film, Filter thin film, Metal thin film, Polarized thin film, Non-Polarized thin film, depends on customers request and the wavelength range covers from DUV to FIR.

**TECNOTTICA CONSONNI SRL**

C205

Custom Optical Coatings

Application of custom anti-reflective, high-reflectivity or filter coatings up to dia. 350 mm. Thanks to our internal coating department, we can develop and apply custom optical coatings on the substrates manufactured internally or, as an alternative, on substrates coming from our customers. Our coating department is equipped with 2 coating chambers with evaporation and PIAD technologies and we can cover ranges from 300 nm up to 15 μm .



EVATEC AG

B502

CLUSTERLINE® Family

CLUSTERLINE® are a family of platforms named according to their substrate size capability. All platforms share cluster architecture with cassette-to-cassette processing and fully automated handling. Production solutions on CLUSTERLINE® cross all 6 Evatec core markets. Whatever your application, our specialists can help you configure an ideal CLUSTERLINE® platform for you. We deliver complete process solutions including highly aligned magnetic films, high performance piezoelectrics like AlScN for broadband RF filters and highly efficient energy harvesting devices, high aspect ratio TSV metallization in Advanced Packaging or precise deposition of TCOs and multilayer dielectrics for the latest micro LED and 3D filter technologies.

**EVATEC AG**

B502

BAK Family

With new levels of flexibility, and new levels of process control the BAK Evaporator is the industry leader in selected applications across Power Device, Wireless, LED, MEMS and Photonics applications. There is a BAK that's suitable for everyone - from the compact BAK 501 for universities and research institutions to the BAV 2000, a production giant.

**APP SYSTEMS SERVICES PTE LTD**

B331

**Pfeiffer Vacuum HiCube Neo
Turbopumping Stations**

The Future of Vacuum Technology - Innovative turbopump units for precise high vacuum applications. Discover the HiCube Neo - our latest generation of turbopumping systems that combine outstanding performance, flexibility and user-friendliness in an innovative design. • Compact series of pumping stations for all high vacuum applications • Simple operation with touch display • Remote control via web server available • Reliable and robust

**BUHLER ASIA PTE. LTD**

C224

ALD 1200

Conformal optical coatings meet high throughput. Experience the most innovative Atomic Layer Deposition system for optical coatings - the Leybold Optics ALD 1200, our Plasma-Enhanced Spatial ALD system delivers ultra-thin, dense, and stress-controlled coatings on micro-structured and curved 3D substrates - double-sided in a single pass. With high deposition rates on 8 substrates of up to 300 mm, process temperatures from 50–230°C, and a fully customizable wafer handling solutions, it combines best-in-class conformality with semiconductor-grade throughput and cleanliness.



HUICHENG

D122, D123

**Magnetron Sputtering
Optical Coating Equipment**

This equipment adopts metal mode sputtering technology combined with RF-ICP/CCP ion sources. It is equipped with robotic systems for automated substrate transfer between the loading and unloading chambers, ensuring uniformity of <1% in mass production for high-quality results. It can produce various coatings, including cutoff filters, bandpass filters, RGB filters, AR films, hard AR films, HR films, AS/AF films, AR+DLC+AS/AF films, ITO films, infrared AR films, and cold light films. These coatings are widely used in optical lenses, displays, automotive central control screens, LiDAR, and HUD (head-up displays).

**HUICHENG**

D122, D123

**Atomic Layer
Deposition (ALD) Equipment**

High-Throughput Plasma-Enhanced Atomic Layer Deposition System (PEALD) features an automated wafer transfer system and specialized ALD control software, enabling one-click fully automated operation. It ensures low precursor consumption, atomic-level thickness control, excellent film uniformity, and conformal coverage. The system is capable of achieving highly uniform coatings on components with complex shapes. It can deposit metal films, oxides, nitrides, and sulfides, and is widely used in optical lenses, Micro/Mini LEDs, power devices, OLEDs

**SHENZHEN YUANSHI
OPTOELECTRONICS TECHNOLOGY CO.,LTD.**

D006

Thermal-ALD

- Gas delivery is optimized for use with wide range of precursors, while avoiding issues such as gas line clogs or cross contamination.
- Integration with high-level industry standard: based on PLC and IPC with touch screen.
- Reliable and comprehensive safety interlocks.
- User-friendly software interface with "one button" operation for process implementation.
- Provide customized thin film deposition processes.

**KURT LESKER (SHANGHAI)
TRADING COMPANY INC**

C126

PRO Line PVD 75

The Kurt J. Lesker Company® PRO Line PVD 75 is the next generation thin film deposition system based on the workhorse PVD 75 platform. The PRO Line PVD 75 builds on the successes of the original design with improved system base pressures and pump down times. A technically superior chamber design, an industry best software control system with advanced programming capability, automatic substrate loading, and numerous features for optimized thin film performance are a few of the key advantages offered in this innovative, best of class design.



XI'AN SNP PRECISION OPTICS CO.,LTD

C303

**Vacuum System
For Super Stable Cavity**

Product name: Vacuum system for super stable cavity Material: stainless steel (304/316L)/titanium (TC4)/aluminum alloy Type: square cavity, spherical cavity, cylindrical cavity, elliptical cavity and other non-standard shapes Surface treatment: electrolytic polishing of internal and external surfaces Vacuum leakage rate: $<1 \times 10^{-11} \text{pa} \cdot \text{m}^3 \cdot \text{s}^{-1}$ Working vacuum: $<1 \times 10^{-5} \text{Pa}$ Temperature control accuracy: $<1 \text{mK}$ Temperature control stability: the external temperature change is not more than 2°C , $1 \text{mK}/\text{day}$ Service voltage: 24V Power: 10W-100W (depending on vacuum chamber size) Other: vacuum cleaning, high temperature vacuum degassing, aerospace grade sealing welding Pump shutdown 7-10 days, ion pump can directly start to maintain vacuum

**KURT LESKER (SHANGHAI)
TRADING COMPANY INC**

C126

KJLC Cobalt Dry Scroll

The KJLC Cobalt Dry Scroll provides superior specs compared to other scroll pumps, while reducing cost of ownership.

**HL CRYOGENICS**

C106

Vacuum Insulated Pipe

Vacuum Insulated Pipe (VI Piping), namely Vacuum Jacketed Pipe (VJ Piping) are used for transferring of liquid oxygen, liquid nitrogen, liquid argon, liquid hydrogen, liquid helium, LEG and LNG, as a perfect substitute for conventional piping insulation.

**HL CRYOGENICS**

C106

Vacuum Insulated Flexible Hose

HL Cryogenics' Vacuum Insulated Hoses, also known as vacuum jacketed hoses, offer superior cryogenic fluid transfer with ultra-low heat leakage, resulting in significant energy and cost savings. Customizable and durable, these hoses are suitable for a wide range of industries.



ACEXON TECHNOLOGIES PTE LTD

B311

**Pharos - Solid State
Femtosecond Laser System**

PHAROS femtosecond lasers combine multi-millijoule pulse energy and high average power, featuring a robust optomechanical design optimized for both scientific and industrial applications. The thermally stabilized and sealed design ensures seamless integration into various optical setups and machining workstations, delivering exceptional laser lifetime and stable operation across varying environments. PHAROS provides unparalleled versatility, covering applications that would typically require multiple laser systems. Its key tunable parameters include pulse duration (100 fs – 20 ps), repetition rate (single-shot – 1 MHz), pulse energy (up to 5 mJ), and average power (up to 20 W). The built-in pulse picker enables a pulse-on-demand

**ACEXON TECHNOLOGIES PTE LTD**

B311

FemtoFiber ultra FD

Femtosecond fiber laser with fiber delivery for multi-photon microscopy A game-changer for simplifying multi-photon microscopy No mirror alignment, no power meter, just automated fiber coupling Safeguard monitor to make misalignment an impossibility Completely replacing the free-space paths between a Watt-level femtosecond laser and a two-photon microscope is a game-changer for modern microscopy. Delivering femtosecond pulses directly from the laser source to the microscope via an optical fiber enables completely new microscope designs and brings laser safety and ease of use to a new level.

**JD UNION PTE. LTD.**

B321

Lasers

JD Union proudly distributes a diverse range of laser brands, including IPG Photonics fiber lasers and systems, Iradion DPSS lasers (formerly Innolas Photonics), Iradion CO2 lasers, Luxinar CO2 lasers (formerly Rofin-Sinar UK), Trotec lasers, Innolas Laser for scientific, Femtum mid-IR lasers, and more. We offer lasers from CW to femtosecond, covering a wide spectrum of wavelengths to meet various industrial and research needs. Let us empower your applications with cutting-edge laser technology.

**DOSPECTRUM**

C113

Quantum Cascade Laser

The quantum cascade laser (QCL) is a new type of semiconductor laser. QCLs retain the compact size and long lifespan characteristic of traditional semiconductor lasers. As a product of innovative semiconductor laser theory, QCLs have significantly expanded the lasing range of semiconductor lasers. Prior to the invention of QCLs, traditional semiconductor lasers primarily emitted wavelengths in the visible and near-infrared bands. QCLs have extended the emission range of semiconductor lasers to the mid- and far-infrared as well as terahertz bands, enabling growing applications in gas detection, space communication, infrared countermeasures, and terahertz imaging.

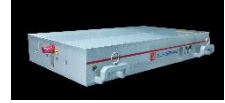


STRONG LASER

C330

500W IR Picosecond Laser

1. Applicable materials: Positive and negative electrode material of power battery (LiFePO₄(LFP), LiMnFe_{1-x}PO₄, Na+) 2. Application scenarios: Cathode and anode electrode cutting of stacked battery; Semiconductor wafer scribing 3. Product Advantages: 1) High average power (> 500 W) and high repetition frequency (5 MHz) output, processing efficiency is remarkable; 2) High stability of pulse energy, good consistency of processing results; 3) Optical-mechanical-electrical integrated design with compact structure.

**STRONG LASER**

C330

40W UV Femtosecond Laser

1. Applicable materials: High brittle material (sapphire, glass, ceramic, silicon); Metal oxides (Fe₂O₃, Na₂O); Semiconductor materials 2. Application: Engraved grating ruler; Oled cutting, repair, stripping; PI membrane cutting; Polarizer cutting 3. Product Advantages: 1) UV femtosecond high power (more than 40 W) output; 2) Narrow pulse width (less than 500 fs); 3) Support POD and Burst mode.

**CRYSTRONG PHOTONICS**

D304

2.1-2.5μm Femtosecond OPO Laser

Features: Generation of 200 fs ultrashort pulses by 1 ps pumping Broad wavelength tuning range from 2100nm to 2500nm Power stability RMS <1% High peak power >10kW Application: Nonlinear Optics Research Nonlinear Optical Microscopic Imaging Mid-infrared Spectroscopy and Environmental Monitoring Precision Polymer Processing

**CRYSTRONG PHOTONICS**

D304

532nm High Repetition Frequency High Energy Nanosecond Laser (Water-jet Laser)

Features: Especially for Industrial water-jet laser processing Long-term power stability RMS<0.5%@8h High-power QBH connector for Energy delivery fiber output or free-space output. Applications: Water-Jet Guided Laser Processing Laser Marking and Engraving Scientific Research and Measurement LIBS Lidar Atmospheric Remote Sensing



SCANLAB GMBH

A121

IntelliSCAN IV Series

The IntelliSCAN IV series represents SCANLAB's latest generation of compact high-performance scan heads – developed to meet the highest demands in industrial laser processing. Thanks to advanced control technology, the IntelliSCAN offers outstanding dynamics, precision, and a significant boost in productivity. A range of apertures and configurations ensures maximum flexibility across a wide range of applications: Additive Manufacturing Photovoltaics Tool and Mold Making Battery Cell Production

**SCANLAB GMBH**

A121

SCANmotionControl

Optimal Control of Laser Processes SCANmotionControl calculates optimum trajectories from specified machining patterns and process parameters, taking into account the physical limits of the scan head. For example, the tolerable rounding of corners can be defined or a constant process speed can be specified. This achieves an optimum processing result with minimum laser-off times without time-consuming optimization loops.

**RAYLASE GMBH**

A123

SUPERSCAN IV

The SUPERSCAN IV's model-based, digital regulation offers extremely dynamic responses and final speeds, which really come into play when used in MOTF-applications (Marking-and-processing-On-The-Fly) in conjunction with one of our linear translator modules. The robust, water-cooled master block design, combined with optional air flushing, enables applications at up to 6 kW laser power. Lenses, protective glass, and mirror substrates and coatings are available for all standard laser types, wavelengths, light densities, focal lengths and processing areas. The control electronics were designed to be flexible to enable the configuration of additional sets of control parameters (tuning options).

**RAYLASE GMBH**

A123

FOCUSSHIFTER RD-14

The combination of an f-theta lens and a deflection unit is ideal for many marking and engraving tasks, providing small focus diameters and good flat-field correction. However, uneven workpieces require dynamic focus adjustment, for example when removing paint or oxides, cutting flexible PCBs, or performing deep engraving or glass drilling. The FOCUSSHIFTER RD-14 adds an adjustable lens system that enables dynamic z-position control, allowing both 2.5D and full 3D processing. Its compact design and flexible mounting options support easy integration into laser systems, making it an effective solution for processing three-dimensional parts and varying height levels.



GYOPTICS TECHNOLOGY CO.,LTD

D501

1500W In-Line Isolator

·High transmittance · Reverse full angle isolation · Suppression of thermal lens effect · Good beam quality · Beam Diameter/fiber type optional

**UNION OPTRONICS CORP.****D316 635nm Semiconductor Laser Diodes**

High-performance 635nm red laser diode delivering reliable 5-30mW output power in compact TO-56 (Ø5.6mm) package. Features built-in photodiode for precise power monitoring and lead-free flat window cap for enhanced durability.

1. High temperature operation, 2. High monitor current, 3. Standard optical power output: 5-30mW (CW), 4. Package type: TO-56 Package, cap window with flat Pb-free lens.

**CENTRAL RISE LIMITED**

C534

N3D Laser Marking Kit

N3D laser marking kit, including 3D laser head, control board and N3D laser control system. N3D offers the following key benefits: 1.Can mark on multi-level height workpieces without changing the position of laser head in flying marking 2. 0 delay Autofocus, can detect work height and adjust focus automatically, don't need to find focus manually. 3. Real-time detect on irregular workpieces, maintains optimal focal alignment, ensuring every character is in right place. 4. Support CVP marking, including code reading, encryption, and defect detection. 5.Precise laser spot control for faster marking of QR codes and filled patterns in flight marking.

**CENTRAL RISE LIMITED**

C534

3D Scan Head

3D galvanometers are categorized into two types: pre-focus and post-focus. They support fiber, ultraviolet (UV), green, and CO2 laser sources, and are widely used in 3D model marking, curved surface processing, deep engraving, cutting, drilling, flying marking, cleaning, and other applications. We offer two product series: the S Series and the PLUS Series. The PLUS Series features faster marking speed, higher processing efficiency, and superior processing quality!



SHENZHEN HRLASER CO.,LTD.

D311

**HRLASER - A3MD30i - Handheld
Laser Welding Machine**

1. Deeper penetration: The entire series supports D mode, with a 30% increase in penetration and a 22% increase in the fastest welding speed. 2. Larger Roller Compatible with 5KG/15KG/20KG large wire rolls, suitable for multiple application scenarios. The wire roller and the wire feeding assembly have the same center line, reducing friction and ensuring smoother wire feeding. 3. Longer cable It is equipped with a standard 6-meter cable, achieving the best balance. The optical performance of the extended armor cable remains stable, significantly expanding the processing range. 4. Stronger control The gun is 490g lighter, enhancing the hold feel.

**GWEIKE TECH CO.,LTD**

D302

**6 in 1 CNC Laser Cutting
Machine and Fiber
Laser Welding Machine**

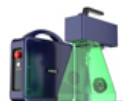
6-in-1 machine, one machine, 6 processing methods is the world's first machine to integrate six functions: Welding / Cutting / Rust Removal & Cleaning/CNC Metal Cutting / CO₂ Cutting / CO₂ Engraving. A one-stop solution for small factories with limited budget to deal with small orders/order fragmentation. 1 Multi Laser Pro = sheet metal workshop + welding station + cleaning line + engraving workshop, order-taking capacity increasing threefold!

**GWEIKE TECH CO.,LTD**

D302

**G2 20W Metal & Plastic
Fiber Laser Engraver**

GWeikeG2 20W Metal Laser Engraver /Bring Industrial to Home Use
1. Speed up to 15000mm/s 2. 100k Hours Lifespan 3. Exceptional Accuracy 4. Desktop & Handheld 2 in 1 5. Auto Lift & Manual Lift 6. Working Area 110*110mm & 150*150mm

**JD UNION PTE. LTD.**

B321

**Direct Machining Control:
DMC Software**

Perfect for additive manufacturing, OEM integration, and R&D, DMC is a flexible, hardware-independent software for laser machines. It manages the entire process, from path generation to machine control, saving time and simplifying complex tasks. Supporting applications from 2D to 5D, both subtractive and additive, DMC handles intricate setups with ease. It offers fully customized software packages tailored to your hardware and application, enabling seamless integration. A custom-branded HMI can also be designed to match your existing software, providing a complete solution for laser machine integrators and advanced manufacturing needs. DMC makes precision and efficiency accessible for diverse laser processes.

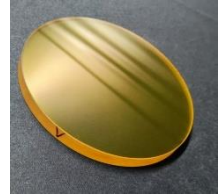


**BLUE RESOURCE OPTICS
(CHENGDU) CO.,LTD.**

C101, C102

Infrared Optical Components

This high-performance infrared optical component, made of premium ZnSe, offers excellent transmittance in 3-12 μ m mid-infrared band, high laser damage threshold and thermal stability. Its 210mm large aperture, ultra-high surface finish and 0.22 λ PV accuracy minimize distortion, supporting high-end applications like infrared imaging and lidar. It delivers reliable solutions with distinct market differentiation.


SD OPTICS SINGAPORE PTE LTD

B324

Infrared Optics

This optical part is manufactured to transmit within the visible and infra-red spectrum range of up to 5700 nanometers. It is generally used for filters, detection windows, thermal imaging and IR Domes.


BOTE OPTICS

B313

Infrared Components

This year, our top-selling products are infrared lenses and windows made from Zinc Sulfide, Calcium Fluoride, Zinc Selenide, Chalcogenide glass, IRG206, and Silicon. We support both aspheric and spherical optics, custom sizes, and production quantities. We also offer optical coatings including DLC for harsh environments and BBAR coatings optimized from SWIR to LWIR. In addition, we manufacture Germanium aspheres, spheres, and windows with coating options as well. All parts are processed in-house with full IR metrology, and we accept custom drawings for OEM programs, prototyping, and volume production.



BOTE OPTICS

B313

Custom Infrared Lens

We also provide full custom infrared lens design and build services. We support NIR/SWIR, MWIR, and LWIR systems, including fixed focus, motorized or manual zoom, and athermalized optical designs to maintain focus over wide temperature ranges. We design for MTF, stray light, boresight, weight, and volume targets based on your application specs. Our team can take your FOV / NFOV / detector format and deliver a complete optical/mechanical design, prototypes, and then mass production. We can integrate IR materials such as Ge, ZnSe, ZnS, Si, CaF₂, Chalcogenides or mixed-glass designs to optimize performance.

**WAVELENGTH
OPTO-ELECTRONIC (S) PTE. LTD**

B514

Shortwave Infrared SWIR Lenses

Shortwave Infrared (SWIR) wavelength band offers unique imaging advantages over visible and other thermal bands. It is quietly earning a growing place in industrial machine vision for electronic board inspection, material/food sorting, solar cell inspection, quality inspection, and in security applications. SWIR lenses are utilized where other detectors or cameras are not sensitive enough for finite detail recognition. Customization is available for this product. Let us know your specifications in the RFQ form.

**HANGZHOU TIANFU
OPTOELECTRONIC TECHNOLOGY CO.,LTD**

C604

**Medium-wave Cooled
Catadioptric Zoom Lens**

The research and development and production of medium-wave infrared (MWIR) and long-wave infrared (LWIR) optical systems. It has a strong design team with rich experience in infrared optical design. It can use advanced design concepts to design a variety of medium-wave cooled catadioptric zoom infrared optical products for customers to meet their needs.

**VITAL OPTICS TECHNOLOGY CO.,LTD**

C601

Cooled Infrared Modules

Low cost, high resolution, fine image detail, independent and controllable industrial chain, and guaranteed supply.



AIRBOARD TECHNOLOGY (S) PTE LTD

B631

Imaging and Optical Solution

Excelitas-PCO offers the broadest portfolio of scientific, industrial and specialized imaging camera systems on the market. Equipped with CCD, iCCD, CMOS, sCMOS or InGaAs sensors. We also design and manufacture a range of medium and long range thermal cameras covering the MWIR and LWIR wavebands for demanding surveillance, targeting, naval and C-UAS applications. Delta Optical Thin Film offer Homogeneous Bandpass, Edge and Blocking Filters, Dichroic Beam splitters and Linear Variable Filters. With unique and advanced design software and proprietary deposition control software, we ensure a fast and efficient design process and a rapid prototype manufacturing process.

**VITAL OPTICS TECHNOLOGY CO.,LTD**

C601

Thermal Cameras

Low cost, high resolution, fine image detail, independent and controllable industrial chain, and guaranteed supply.

**HANGZHOU BAITENG ELECTRONIC TECHNOLOGY CO.,LTD**

C502

Portable Hyperspectral Camera

The FigSpec@FSIQ Series portable hyperspectral camera is an internal sweep hyperspectral camera with a wavelength range Circumference 400-1700nm, spectral resolution (FWHM) can reach 2.5nm, the spatial resolution is up to 1920*1920, and the number of spectral channels is up to 1200; Display and operation through 5-inch touch screen, resolution 1280*720.

**HANGZHOU BAITENG ELECTRONIC TECHNOLOGY CO.,LTD**

C502

UAV Hyperspectral Camera System

✓ DJI M350 or M400 are used as the flight platform, wavelength can cover from 400- 2500nm; ✓ High SNR ultra high speed spectral scanning imaging device is used to provide highly stable spectral image acquisition; ✓ The self-developed image processing algorithm with high efficiency and low power consumption is adopted to greatly extend the flight time of the whole machine and reduce the system power consumption; ✓ Through real-time measurement of spectral image information of plants, water bodies, soil and other surface objects, application and precision agriculture, crop growth and yield assessment, forest pest monitoring and fire prevention monitoring, coastline and marine environment



**JNHUA LANHAI PHOTOELECTRICITY
TECHNOLOGY CO.,LTD**

C511

Laser Sensor

The M300 non-repetitive scanning LiDAR offers a range of up to 50 meters, with a 360° horizontal FOV and a -10° to 60° vertical FOV. It delivers outstanding coverage and accuracy, producing dense point clouds, making it ideal for various indoor and outdoor applications such as smart mowers, industrial AMRs, and 3D modeling. Its innovative scanning pattern ensures rich environmental detail and stable performance.


**JNHUA LANHAI PHOTOELECTRICITY
TECHNOLOGY CO.,LTD**

C511

Laser Sensor

The S300 solid-state LiDAR features a 48 m range and 120°×50° FOV, enabling full-scene indoor and outdoor applications. With dense, precise 3D sensing and no mechanical parts, it ensures long-term stability and reliable point cloud data. Widely used in robotics, automation, and security, it excels in area intrusion detection, forklift and personnel identification, and real-time alarm functions under all lighting and weather conditions.


SANSHENG ENCODER

C333

**SZM Ultra Thin Integrated
Magnetic Absolute Encoder**

Ultra thin Magnetic Principle, high absolute accuracy: $\pm 0.01^\circ$
Integrated structure, easy installation, no secondary calibration Dust-proof design Redundant design, automatic error correction Zero position marking Alternative to imported brands (HEIDENHAN, Renishaw, Netzer, etc.), domestic customized.


SANSHENG ENCODER

C333

**TSZ Ultra Thin Integrated High
Accuracy Optical Absolute Encoder**

Ultra thin Photoelectric Principle, high absolute accuracy: ± 5 second
Integrated structure, easy installation, no secondary calibration Dust-proof design Redundant design, automatic error correction Zero position marking Alternative to imported brands (HEIDENHAN, Renishaw, Netzer, etc.), domestic customized.



NEXUSTEST PTE LTD

B521

1.6T Benchtop Bit Error Ratio Tester PBT3058

1.Wide data rate range Range: 24.33 ~120 GBaud. 2.Flexible configuration Flexible test unit replacement. Channels can be independently configured for NRZ or PAM4 signaling measurements. 3.Excellent signal quality Fast rising and falling edges, low intrinsic jitter. Support high swing output, pre-emphasis, and independent adjustment of eye height. 4.Rich test code types Pattern: PRBS57~31, PRBS70~31Q, SSPRQ, JPO3A, JPO3B, LINEAR, Square Wave, Custom Defined Pattern. Trigger signal supports frequency division output (4 division to 32 division).

**KOREA ADVANCED MATERIALS CO.,LTD**

B102

Power Meter

KAM's optical test equipment lineup provides high-precision measurement solutions for modern fiber-optic networks. Designed for CWDM, DWDM, LWDM, PON-Power meters, MPO, and standard optical transmission systems, these devices offer accurate power measurement, fast scanning within less than 1sec, and user-friendly interfaces suitable for field technicians, telecom operators, and data-center engineers.

**DIMENSION TECHNOLOGY CO.,LTD.**

A211, A212

1.6T/800G High-Speed Signal Test Solution

The DIMENSION High-Speed Signal Test System comprises an 800G Bit Error Rate Tester (BERT) and 112G CDR600 (single-mode/multi-mode) clock recovery units. Integrated with DIMENSION's multi-channel optical attenuators, optical switches, optical power meters, and data analysis software, this system enables rapid and accurate characterization of high-speed optical transceivers, including parameters such as BER, eye diagram, and optical power. The system automatically generates test reports and data logs, facilitating easy traceability and in-depth analysis. Designed for seamless integration and flexible scalability, it can be tailored to meet specific customer process requirements, significantly enhancing test efficiency while controlling overall costs.

**DIMENSION TECHNOLOGY CO.,LTD.**

A211, A212

AutoGet MT Fiber Endface Inspector

Engineered to meet this exact challenge, the Dimension AutoGet MT Fiber Endface Inspector provides an intelligent solution for silicon photonics, 1.6T/800G optical modules, and next-generation high-density connectors. Its large FOV captures the entire core in a single scan, and its ultra-high-resolution optics pinpoint micron-level defects. With AI-driven algorithms that automatically analyze end-face imperfections, it is a critical tool for guaranteeing CPO system reliability—directly supporting efficient data center operations and enabling the smarter network infrastructure of the future.



**SHANGHAI JOIN-MU
INTELLIGENT TECHNOLOGY CO., LTD**

A502

**MAP900-MBR MT-FA
Automatic Test System
(IL&RL&Polarity Detection)**

MAP900-MBR is a special MT-FA device insertion loss, back loss, polarity as one of the automatic test system, is a set of optical back reflection detection technology, image recognition technology, motion control technology integration of optical precision testing instrument. It can realize the automatic detection of 400G/800G/1.6T optical module components and optical engine components.



**SHANGHAI JOIN-MU
INTELLIGENT TECHNOLOGY CO., LTD**

A502

**MAP900 Multi-channels
IL & RL Test System**

The application of Join-MU's "no-mandrel" technology solves the problems of multi-core optical devices that can't be wrapped and require matching, greatly improving the testing efficiency of multi-core/ribbon optical fiber IL & RL.



**TIAN JIN ELOIK COMMUNICATION
EQUIPMENT TECHNOLOGY CO., LTD.**

A611

Access Network Analyzer

1.Support 10G cable or fiber and 2400M wireless internet speed testing 2.Powerful WiFi Airtime test function, no need password and internet connection, without using any WiFi traffic, showing test results in real time. 3.Power by Android system, support 3rd party APPs 4.Support HDMI, 3.5mm earphone jack, Type-C, TF Card and other ports. 5. Pocket size, easy to carry



SHENZHEN FTTX TECHNOLOGY CO.,LTD

A114

Optical Time Domain Reflectometer

The TC-330 is a portable, multi-functional OTDR integrating fiber testing, power metering, VFL, light source, and RJ45 testing. Its 3.5-inch touchscreen, 90km range, 20-hour battery, and compact design offer high efficiency and convenience for FTTX and network maintenance.



Semiconductor

NEXUSTEST PTE LTD

B521

120 Gbaud Clock
Recovery Unit CR3302

1.Wide range Supports NRZ / PAM4 signal clock extraction at 25~120 Gbaud. Excellent performance. 2.Fast locking speed Under auto/semi-auto mode. 3.Wavelength range 1250~1600 nm 4.Multiple frequency output Supports 1/2 (25/50 Gbaud) , 1/4, 1/8. 5.Recovered clock random jitter ≤ 200 fs (typical). 6.Flexible configuration Supports both optical and electrical signal clock recovery (optional). 7.High sensitivity -14 dBm@106.25 Gbaud PAM4/1310 nm. Very conducive to silicon photonic application with ultra-low input optical power. 8.Easy to use With either touch lcd screen or flexible remote-control solution, the CR3302 can work with sampling oscilloscopes easily and quickly.

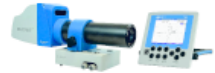


MÖLLER-WEDEL OPTICAL GMBH

A133

ELCOMAT® 5000

ELCOMAT® 5000 is Möller-Wedel Optical's unique electronic autocollimator that combines highest precision angle measurements with a robust design fit for nearly every environment. ELCOMAT® 5000 finds its main areas of application in machining, semiconductor industries, optics and photonics manufacturing, calibration laboratories as well as in synchrotron and research facilities.

SHENZHEN SHUHE TAI
TECHNOLOGY CO.,LTD

D029

NAND Flash Intelligent
Test System

Product Description: This series is a comprehensive NAND Flash test system offering customizable testing solutions. It operates within a temperature range of -60°C to 150°C, features 240 parallel test interfaces, and supports customized expansion. **Core Advantages:** ·Tests NAND Flash chips at frequencies up to 3200 Mbps. ·Performs flash endurance testing to predict remaining useful life. ·Supports wide-temperature screening to simulate extreme operating conditions. ·Enables high-quality flash die sorting. ·Supports voltage margining tests. ·Allows user-defined Pattern configuration. The system provides the global semiconductor industry with high-precision, high-reliability NAND Flash grading and screening services, along with comprehensive product solutions.

SHENZHEN SHUHE TAI
TECHNOLOGY CO.,LTD

D029

SSD Intelligent Test System

This equipment is a flexible and comprehensive SSD reliability testing system with an operating temperature range of -60°C to 150°C, capable of supporting enterprise, industrial, and consumer-grade solid-state drives. **Core Advantages:** ·Ultra-wide temperature testing to simulate real-world application scenarios ·Comprehensive interface protocol support, adaptable to diverse project requirements, with customizable test solutions ·Batch automation testing capability, significantly improving efficiency and reducing costs ·Compatibility with self-developed MES systems for full-process quality control ·Automated test report generation for quality analysis and fault tracing It provides professional testing services and comprehensive product solutions to global storage manufacturers.



Alignment Equipment

OPTOSIGMA SOUTHEAST ASIA PTE LTD

B301

Optical Alignment Systems

The provided ALIGNMENT STAGE units boast 12 axes (6-axis) with symmetrical configurations, enabling flexible and cost-effective customization for silicon photonics, Semiconductor and Quantum Device alignment applications. The use of standardized hardware and customizable software streamlines system creation. The magnet mounting method and positioning mechanism in the holders ensures high positional repeatability. We work with strategic partners to enhance our alignment solutions. KATSURA OPTO specializes in optical measurement technology, providing laser tilt sensors, autocollimators. MECHNO TRANSFORMER develops piezo actuator that allowed nanometer resolution alignment.



MRSI AUTOMATION (SHENZHEN) CO.,LTD

B214

MRSI-A-L Active Aligner

MRSI A-L is a modular-design machine, with integrated pick and place, dispense, vision, alignment functions, as well as intelligent software that offers users flexible processes. It is a powerful tool for optical components assembly, such as transceivers, silicon photonics, AWGs, LiDAR, integrated optics etc. Active aligner applications tend to be highly customized and MRSI is equipped to meet design requirements for customized applications. Configuration highlights:

- 360° rotatable laser angle collimator for high precision surface angular control
- Laser beam profile measurement and processing
- Powerful machine vision
- 1µm accuracy laser height detection
- Auto dispense & UV cure



SHENZHEN ALT PRECISION TECHNOLOGY CO.,LTD.

A113

Dual-station Fully Automatic Active Alignment Equipment

The Active Alignment equipment independently developed by AIT is used for the AA process of optoelectronic modules. In terms of process, it can replace the two main process flows, LHA and Auto Focus. The equipment achieves micrometer-level alignment of the Sensor and Lens across six degrees of freedom, ensuring that the Sensor center and Lens optical center are aligned, thereby enhancing the resolution and uniformity of the image both at the center and edges. It perfectly implements optical active alignment to achieve the optimal imaging performance of the product.



LASER X TECHNOLOGY (SHENZHEN) CO.,LTD.

A808-17

SiP Alignment & Test System

Performance Parameter 1. Applicable types of product: SiP, TFLN01, Blue film, single DIE, Bar chip 2. Load and unload method: Fully automatic Load and unload 3. Temperature range: 25°C~80°C 4. Heating time(25°C~80°C): 1.5min 5. Cooling time(80°C~25°C): 1.5min 6. Alignment technical index: Optical coupling<30s(U Loop); Alignment Repeat accuracy< 0.2dB; Optical power stability<0.2dB@3min 7. Alignment system: Single/dual FA, end coupling, vertical coupling 8. Equipment characteristics: -High-precision needle insertion system, automatic needle insertion -Linear motor alignment system, automatic alignment system -Automatic dispensing -Automatic cleaning -Automatic sorting Bin -OCR recognition -MES system



Spectroscopy

AIRBOARD TECHNOLOGY (S) PTE LTD

B631

Test and Measurement

The Excelitas family of Single-Photon Counting Modules (SPCMs) are self-contained modules that meet the low-light-level detection demands of confocal microscopy, fluorescence, luminescence, and TCSPC, particle sizing and Quantum Communications. Our SPCMs offer market-leading Photon Detection Efficiency (PDE), low after-pulsing, highest uniformity over the active area, high linear dynamic range, and low dark counts. Ocean Optics pioneered miniature spectrometers and delivers spectral solutions to researchers, OEMs and industrial customers, also designs and builds industrial-grade photonics systems for material inspection, chemical identification and quality assurance.



HAKUTO SINGAPORE PTE LTD

B513

OtO Photonics

OtO Photonics Inc. is a leading innovator in micro-spectrometer technology, integrating advanced spectroscopy with multidisciplinary expertise to deliver complete optical solutions. Dedicated to technological innovation and applied creativity, OtO empowers customers to achieve breakthroughs across industries. With deep experience in opto-mechanical integration, OtO continues to develop cutting-edge, customizable solutions that drive performance, enable new applications, and create market value. Backed by strong technical foundations and collaborative partnerships, OtO Photonics aims to help clients maximize commercial potential and stay ahead in the evolving photonics landscape. Welcome to discuss and communicate with us, let us collaborate to create innovative technology or products



DOSPECTRUM

C113

Photodetector

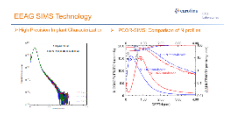
A photodetector is a sensor that converts optical signals (photons) into electrical signals (electrons). As a core component of optoelectronic technology, it serves as the "eyes" of the entire system and is widely used in communications, sensing, medical, military, and scientific research fields. Duopu is an experienced developer of photodetectors, offering solutions across various wavelengths, dynamic ranges, and timescales.



AIWENSI

A633 SIMS and Material Surface Analysis

SIMS (secondary ion mass spectrometry) could report element distribution in trace level, to monitor quality of Implant/ CVD/ LPCVD/ MOCVD/ ALD/ EPI/ Diffusion/ Anneal/ ECP/Oxide process; We could measure Si/ SiO₂/ SOI/ LOT/ PSG/ BPSG/ FSG/ SiN/ SiON/ SiGe/ InP/ GaAs/ AlGaAs/ GaN/ AlGaIn/ AlN/ SiC/ GaO/ Diamond/ Graphite/ Cu/ LiNbO₃/ MCT material, and thin film from 2nm to 32um, and pattern sample to 25um*25um(Si). Surface analysis mainly includes SIMS , XPS (X-ray photoelectron spectroscopy) , and AES(Auger electron spectroscopy) characterization. we will get ToF-SIMS tools in Dec.2025; it will enhance our surface analysis capacity strongly.



Microscope

MITUTOYO ASIA PACIFIC PTE LTD

A323

VMU (Video Microscope Units)

The VMU series is a measurement microscope unit that offers a 30 mm image field on the image side, offering an observation area approximately seven times larger compared to conventional models. Its inspection capability is further enhanced by combining with Mitutoyo's range of long working distance lenses, which are made and designed in Japan. Mitutoyo lenses can support a wide range of wavelengths from ultraviolet to near infrared, featuring industry-leading long working distances and a maximum field of 30mm. By combining with Mitutoyo's long working distance lenses, VMU enables highly efficient inspection for defection detection and surface inspection.

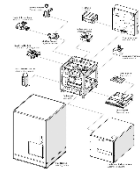


MÄRZHÄUSER WETZLAR GMBH & CO. KG

C201

ScanExpress

The ScanExpress is a custom-configurable scanning system built on a lightweight, torsionally stiff base unit. Core Components: It features a SCAN series scanning stage (130x80mm) and a focus axis, both optionally available with integrated measuring systems. The equipment includes transmitted and reflected light units, motorized turrets for objectives and reflectors, and a camera tube. Control & Automation: The system is controlled by the TANGO neo 4 controller and is programmable via the TANGO API. Full automation is possible through its integration with the open-source software µ Manager. Customization & Specs: Options for liquid dispensing and auto-loading are available.



DINGTENG

B001

Measuring Microscope

Dingteng neutral microscope features Z-axis 0.1µm high-precision focusing, seamless multi-magnification switching and non-destructive testing. Suitable for electronics, automotive, medical fields, it combines intelligent imaging with efficient measurement, capturing micro-details accurately and outperforming similar products.



OPTICAL GAGING (S) PTE LTD

B333

OGP SmartScope M Series

SmartScope M-Series from OGP represents a line of advanced 3D multisensor dimensional measuring systems with features tailored for precision metrology. The M-Series includes models like the M20 and M45, each equipped with the IntelliCentric-M optical system, which boasts a 20-megapixel metrology camera and VIRTUAL ZOOM technology for superior image quality and resolution. These systems offer LED illumination, multisensor versatility with options for touch probes, scanning probes, and laser sensors, and a robust design for accuracy. They cater to diverse applications, from rapid edge detection to intricate 3D measurements, making them ideal for high-precision environments.



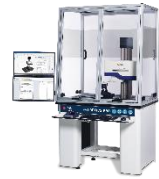
Imaging Measurement

AMETEK SINGAPORE PTE LTD

B213

PGI Optic Pro

A benchmark for accuracy and versatility in measuring high precision optics. Taylor Hobson is the only company that can prove radius accuracy and form capability over the full gauge range. This is to certify the integrity and reproducibility of the results the system produces. Better image quality send thru amefex.



3D Instant Scanning Ultra High-Precision Video Measurement System (μm & nm)

DSC INDUSTRIAL PTE LTD

B522

Our 3D INSTANT scanning high-precision (μm) video measurement system can perform 2D/3D measurements simultaneously at high-speed on a single machine to meet your unique high-precision requirements in photonics, semicon, lead frame, electronics & PCBA etc. Our 3D Ultra high-precision (nm) measurement systems can support resolution 0.1nm with repeatability 30nm. Fully automatic measurements on parts/wafers/glasses/multi-layer-coatings/PCBA for their 3D surface profile, roughness, warpage, BOW and TTV etc on our machines with your required stage sizes, e.g. 100mm x 100mm, 350mm x 350mm or 1000mm x 800mm etc. We can curate our 3D machines to meet your unique high-precision challenges.



TRIOPTICS SINGAPORE PTE LTD

B304 Image Quality (ImageMaster® HR 2)

The devices ImageMaster® HR 2 and Universal provide an outstanding level of accuracy and flexibility when testing the MTF (modulation transfer function). The equipment is modular and upgradeable to allow for custom configuration as test requirements change. The instrument can be configured for testing optical systems with the object at infinity or object and image at finite conjugates. The accuracy of the measurement is traceable to international standards. The ImageMaster® HR 2 offers versatile functionality for testing the image quality of small and medium-sized lenses, e.g. for smartphone, photo and film cameras.

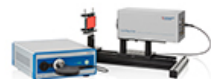


LumiTop X150 – Ultra-high-resolution Imaging Colorimeter for MicroLED & MicroOLED Subpixel Metrology

INSTRUMENT SYSTEMS GMBH

A127

The LumiTop X150 system builds on a proven measurement principle that combines a high-speed imaging camera with a CAS reference spectroradiometer to deliver both speed and absolute accuracy in a single shot. With an effective resolution of 150 MP—expandable to up to 600 MP per color channel using the pixel shifter—it enables detailed analysis down to the subpixel level. Luminance, color and uniformity can be evaluated for precise demura correction in production environments. LiveCAL real-time calibration directly on the DUT ensures highest color accuracy, making LumiTop the ideal solution for demanding display testing tasks from development to mass production.



AOI

**HUNAN ULTRA PRECISION
INTELLIGENT TECHNOLOGY CO.,LTD.**

A534

**Fully Automatic Multifunctional
Detection Machine (AOI-DFN030)**

AOI-DFN030 is a multi-faceted inspection equipment developed for the visual defect inspection of semiconductor chips. At its core, the equipment features high-precision motion platform and utilizes an AI deep learning algorithm engine. Leveraging the company's extensive experience in the field of defect detection, the equipment boasts superior imaging capabilities. Its unique Alalgorithm efficiently identifies defects, supports a comprehensive range of defect learning environments, and provides a full-field production information interface. The equipment also integrates multiple process configurations, a high-capacity remote offline review system, and a customized MES system interface, among other advantages.

**HUNAN ULTRA PRECISION
INTELLIGENT TECHNOLOGY CO.,LTD.**

A534

**Wafer Surface Defect Inspection
Equipment (AOI-W500)**

AOI-W500 is a precision system designed for wafer surface defect inspection, utilizing machine vision technology for detection. It identifies a comprehensive range of visual anomalies including residue, contamination, breakage, cracks, scratches, localized discoloration, pattern irregularities, and dimensional deviations (an optional micro-line detection module is required for faint pattern defects). The system offers freely configurable layer settings, with independently saved parameters for different product models

**HEBEI THAHOO PHOTOELECTRIC
TECHNOLOGY CO.,LTD.**

B106

AOI Detection Machine

The AOI six-sided inspection equipment employs a sophisticated integration of deep learning and traditional vision techniques to facilitate model self-improvement and enhance accuracy in real time. This system achieves an impressive recognition accuracy of 0.5 micrometers (0.1 micrometers per pixel) and can detect a diverse array of defect types, including but not limited to cracks, stains, chipping, coating peeling, waveguide similarity, dissociation lines, variations in material quantity, scratches, uneven coating, crushing, waveguide process issues, gold loss, missing characters, and uneven back gold. For each chip and its respective sides, dedicated models are developed, which allows for the training of highly



Positioning System

AIRBOARD TECHNOLOGY (S) PTE LTD

B631

Precision Motion Control

At Zaber, we design and manufacture precision positioning devices that are affordable, integrated, and easy to use. Our devices are used in many different applications and markets, such as photonics and optics, life sciences, microscopy, and industrial automation. SYMETRIE is one of the world's leading providers of hexapod solutions for positioning and motion applications. Since 2001, Symetrie has been designing and manufacturing hexapods for precision positioning, motion simulation and complex custom systems, meeting the needs of industry and research laboratories.

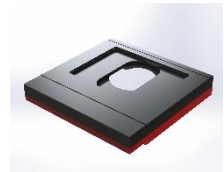


MÄRZHÄUSER WETZLAR GMBH & CO. KG

C201

Microscopy Stage

Microscope stages from Märzhäuser especially distinguish themselves by their extremely precise and smooth running, as well as their unmatched service life.



AKRIBIS SYSTEMS PTE LTD

A513, A512

Miniature Stages -AM Series

Product Features: 1.Compact structure 2.Direct drive technology 3.High precision optical encoder 4.High response 5.Flexible standard design Application: It can be used in semiconductor, optical, medical and automation fields. It is suitable for optical assembly and inspection, optical fiber alignment and optimization, sensor testing and validation and other application scenarios

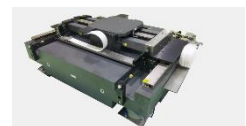


SHANDONG SHANNENG PRECISION MACHINERY CO.,LTD

D331

Precision XY Positioning Stage

Shanneng provides comprehensive solutions for precision air-bearing positioning systems, including: Granite component machining, drive mechanism assembly, on-site installation & commissioning. Leveraging years of expertise in air-bearing structure technology, we deliver high-precision positioning stages with exceptional stability while offering diversified value-added services: custom machining solutions and machine assembly support.



Positioning System

COREMORROW LTD.

C002

Piezo Nanopositioning Stages

Travel up to 1mm, load up to 80kg, optional sensor; Linear and multi-dimensional motion, optional aperture, vacuum version available; Nanometer resolution and positioning accuracy; Millisecond fast response; Products can be customized.



COREMORROW LTD.

C002

Piezo Steering Mirror/Piezo Tip/Tilt/Z Platform

1 to 6 axes motion, optional center aperture; Tilt angle to 86 mrad; Load capacity up to 60kg or more; Resolution up to 10nrad(<0.01 SEC); Millisecond response speed.



TIANSEN

D204

UVW Positioning Platform

Combined with a vision system through three-axis linkage, UVW alignment stages achieve high-precision positioning—specifically micron-level positioning accuracy and stable repeatability. They offer high motion flexibility, making them suitable for high-demand applications such as precision assembly and optical adjustment. Our products feature a compact structural design, a diverse range of models, and plug-and-play electrical integration. All units undergo strict factory requirements and are fully inspected with laser interferometers before delivery.



NANJING FOCUS MATERIALS & TECHNOLOGIES CO.,LTD.

C133

Flatness Measuring Instrument

Used to calibrate and measure the flatness of plates of lap and polish machine or the precision grinding machine.



Conference and Event Programmes

Date	Venue	Conference
4 February 10:00-12:00	Conference Room	2026 Asia Photonics Expo Opening Ceremony & Asia Photonics Conference Plenary Speech
4 February 13:30-17:00	Conference Room	Asia Semiconductor Conference 2026 - Singapore Semiconductor Industry Association (SSIA)
4 February 13:30-17:30	Technical Theatre	Quantum Singapore 2026
5 February 9:00-17:00	Conference Room	Photonics@5G 2026 - LUX Photonics Consortium
5 February 10:30-12:30	Technical Theatre	Advanced Semiconductor Manufacturing Forum
5 February 13:00-14:30	Technical Theatre	EPIC TechWatch: Photonics Applications Across Life Sciences, Medical, Semiconductor, and Communications
5 February 15:00-17:00	Technical Theatre	2026 EUROPE meets ASIA - Innovation in Photonics by W3+ Fair, IVAM & EPIC
6 February 10:30-17:00	Conference Room	Asia Photonics Conference
6 February 10:30-13:00	Technical Theatre	Machine Vision Enabling Industrial Intelligent Manufacturing Forum

Date	Venue	Event
4 February 18:00-21:00	LAVO Singapore	Gala Dinner (By Invitation Only)
5 February 17:00-18:00	VIP Lounge	Happy Hour
4 February 13:45-17:30	JM VisTec & MMI Systems	Site Tour
4 February 13:00-17:10	LITEON & SUTD	
6 February 9:30-13:00	NTU & ASTAR NISTIC	

[>>> Click to view the latest agenda](#)

APE | Asia
Photonics
Expo

Held in:



Brought to you by:



Supported by:



APE 2026

4 - 6 February 2026

Sands Expo and Convention Centre, Singapore



**REGISTER FOR
YOUR FREE PASS**



**VIEW THE FULL
EXHIBITOR LIST**

Follow us:

#APE2026 **in f**   

www.asiaphotonicsexpo.com

